

INSULATION DISPLACEMENT IDC

PITCH

d : 1.27X1.27mm,

b : 2.00X2.00mm,

a : 2.54X2.54mm

IDCR IDC RIBBON CONNECTOR

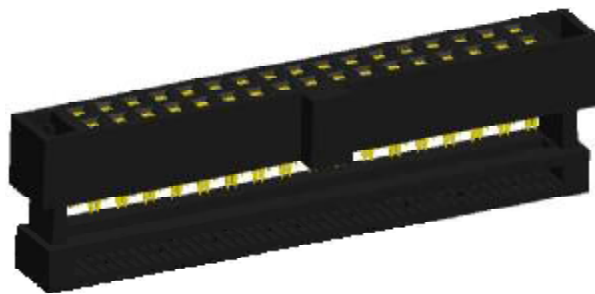
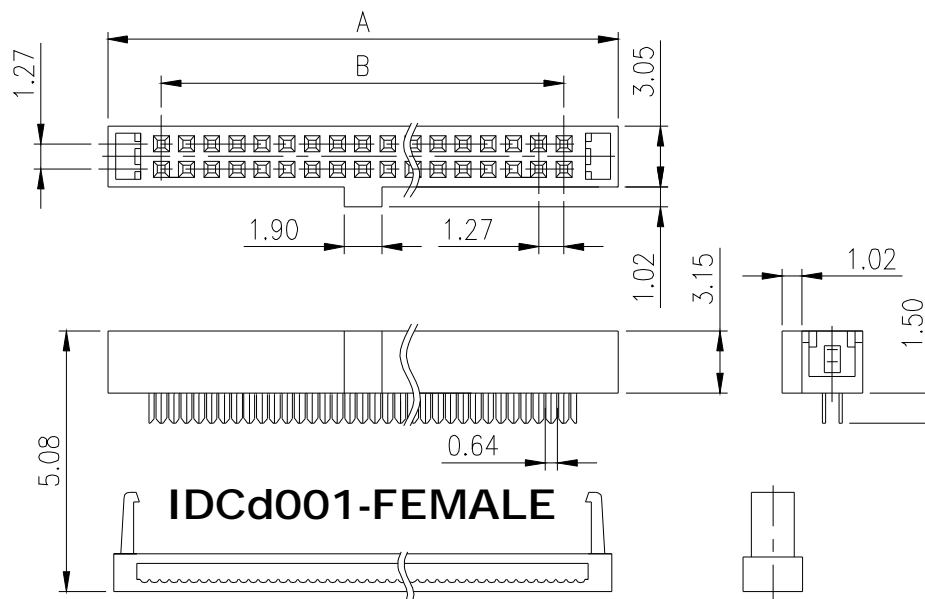
IDB IDC D-SUB CONNECTOR

IDC CABLE ASSEMBLY

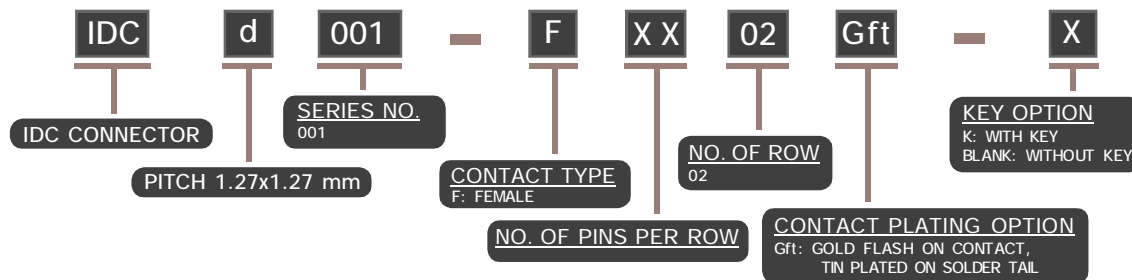
TABLE OF CONTENTS

SERIES NO.	PAGE
<u>IDCd001</u>	<u>1</u>
<u>IDCb001</u>	<u>2</u>
<u>IDCa0X1</u>	<u>3</u>
<u>IDCa002</u>	<u>4</u>
<u>IDCa003</u>	<u>5</u>
<u>IDCa021</u>	<u>6</u>
<u>IDCR001</u>	<u>7</u>
<u>IDB100</u>	<u>8</u>
<u>IDC CABLE ASSEMBLY</u>	<u>9</u>

1.27x1.27 mm IDC CONNECTOR



PART NO.	NO. OF CIRCUITS	DIMENSION	
		A	B
IDCd001-F0502Gft-K	10	10.54	5.08
IDCd001-F0602Gft-K	12	11.81	6.35
IDCd001-F0702Gft-K	14	13.08	7.62
IDCd001-F0802Gft-K	16	14.35	8.89
IDCd001-F1002Gft-K	20	16.89	11.43
IDCd001-F1302Gft-K	26	20.70	15.24
IDCd001-F1502Gft-K	30	23.24	17.78
IDCd001-F1702Gft-K	34	25.78	20.32
IDCd001-F2002Gft-K	40	29.59	24.13
IDCd001-F2502Gft-K	50	35.94	30.48



SPECIFICATIONS

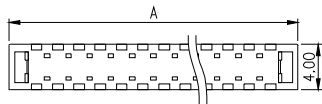
CURRENT RATING : 0.5 AMPS.
 INSULATOR RESISTANCE : 5000 OHM MIN.
 DIELECTRIC WITHSTANDING : AC 250 V.
 OPERATING TEMPERATURE : - 40°C ~ + 105°C
 CONTACT MATERIAL : BRASS / PHOSPHOR BRONZE

MATERIALS

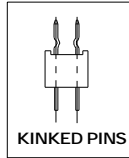
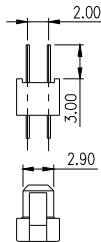
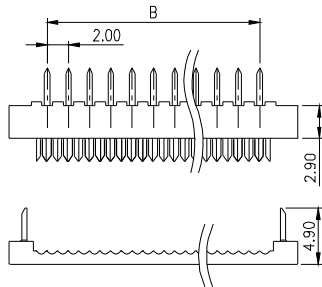
INSULATOR MATERIAL : P.B.T +15% GLASS FIBER (UL94V-0)
 FINISH : GOLD FLASH ON CONTACT, TIN PLATED ON SOLDER TAIL

NOTE : SOME SIZES, STYLES AND OPTION ARE NON-STANDARD, NON-CANCELLABLE, NON-RETURNABLE

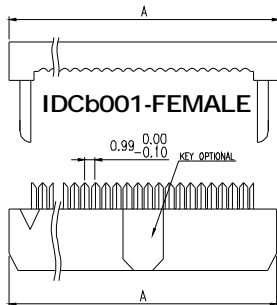
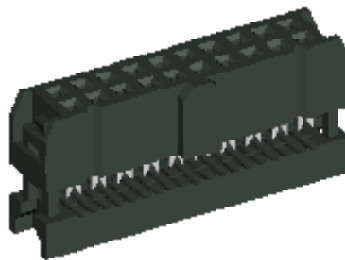
2.00x2.00 mm IDC CONNECTOR



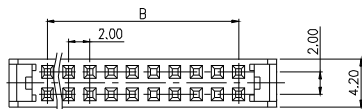
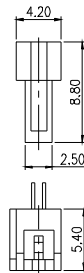
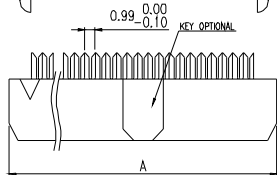
IDCb001-MALE



PART NO.	POSITION	A	B
IDCb001-M0402Gft	8	13.20	6.00
IDCb001-M0502Gft	10	15.20	8.00
IDCb001-M0602Gft	12	17.20	10.00
IDCb001-M0702Gft	14	19.20	12.00
IDCb001-M0802Gft	16	21.20	14.00
IDCb001-M1002Gft	20	25.20	18.00
IDCb001-M1202Gft	24	29.20	22.00
IDCb001-M1302Gft	26	31.20	24.00
IDCb001-M1502Gft	30	35.20	28.00
IDCb001-M1702Gft	34	39.20	32.00
IDCb001-M2002Gft	40	45.20	38.00
IDCb001-M2202Gft	44	49.20	42.00
IDCb001-M2502Gft	50	55.20	48.00
IDCb001-M2802Gft	56	61.20	54.00
IDCb001-M3002Gft	60	65.20	58.00
IDCb001-M3402Gft	68	73.20	66.00



IDCb001-FEMALE

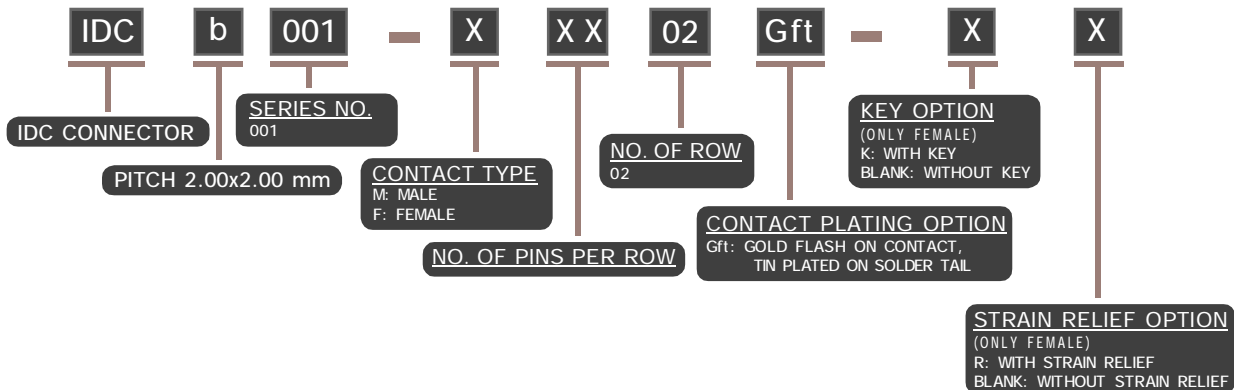


CONNECTOR WITH STRAIN RELIEF
MMT# IDCb001-FXX02Gft-KR
STRAIN RELIEF: MMT#IDCb001-SRXX(XX: NO. OF CONTACTS)



IDCb001-FEMALE STRAIN RELIEF

PART NO.	NO. OF CONTACTS	DIMENSION	
		A	B
IDCb001-F0202Gft	2X2	9.2	2.0
IDCb001-F0302Gft	3X2	11.2	4.0
IDCb001-F0402Gft	4X2	13.2	6.0
IDCb001-F0502Gft	5X2	15.2	8.0
IDCb001-F0602Gft	6X2	17.2	10.0
IDCb001-F0702Gft	7X2	19.2	12.0
IDCb001-F0802Gft	8X2	21.2	14.0
IDCb001-F0902Gft	9X2	23.2	16.0
IDCb001-F1002Gft	10X2	25.2	18.0
IDCb001-F1102Gft	11X2	27.2	20.0
IDCb001-F1202Gft	12X2	29.2	22.0
IDCb001-F1302Gft	13X2	31.2	24.0
IDCb001-F1502Gft	15X2	35.2	28.0
IDCb001-F1602Gft	16X2	37.2	30.0
IDCb001-F1702Gft	17X2	39.2	32.0
IDCb001-F1802Gft	18X2	41.2	34.0
IDCb001-F1902Gft	19X2	43.2	36.0
IDCb001-F2002Gft	20X2	45.2	38.0
IDCb001-F2202Gft	22X2	49.2	42.0
IDCb001-F2402Gft	24X2	53.2	46.0
IDCb001-F2502Gft	25X2	55.2	48.0
IDCb001-F2702Gft	27X2	59.2	52.0
IDCb001-F2802Gft	28X2	61.2	54.0
IDCb001-F3002Gft	30X2	65.2	58.0
IDCb001-F3102Gft	31X2	67.2	60.0
IDCb001-F3202Gft	32X2	69.2	62.0
IDCb001-F3402Gft	34X2	73.2	66.0
IDCb001-F4002Gft	40X2	85.2	78.0



SPECIFICATIONS

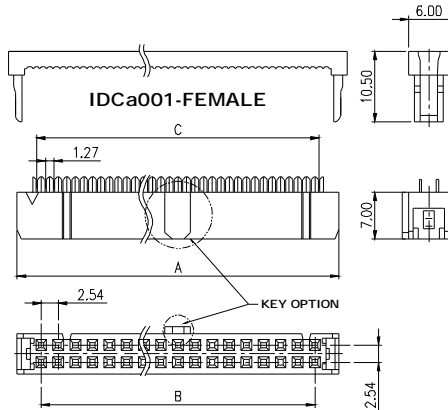
CURRENT RATING : 1 AMPS.
INSULATOR RESISTANCE : 1000 OHM MIN.
DIELECTRIC WITHSTANDING : AC 500 V.
OPERATING TEMPERATURE : - 40°C ~ + 105°C
CONTACT MATERIAL : BRASS / PHOSPHOR BRONZE

MATERIALS

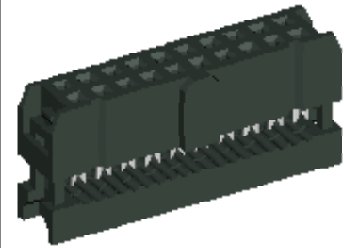
INSULATOR MATERIAL : P.B.T + 30% GLASS FIBER (UL94V-0)
FINISH : GOLD FLASH ON CONTACT, TIN PLATED ON SOLDER TAIL

NOTE : SOME SIZES, STYLES AND OPTION ARE NON-STANDARD, NON-CANCELLABLE, NON-RETURNABLE

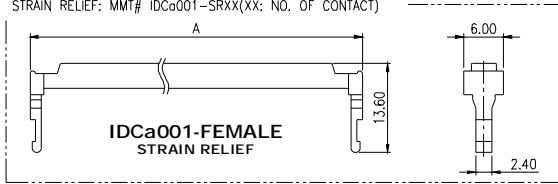
2.54x2.54 mm IDC CONNECTOR



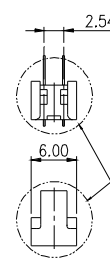
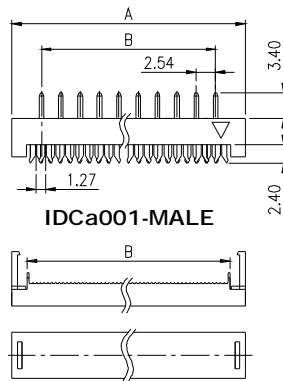
PART NO.	POSITION	A	B	C
IDCa001-F0302Gft-KR	6	12.22	5.08	6.35
IDCa001-F0402Gft-KR	8	14.76	7.62	8.89
IDCa001-F0502Gft-KR	10	17.30	10.16	11.43
IDCa001-F0602Gft-KR	12	19.84	12.70	13.97
IDCa001-F0702Gft-KR	14	22.38	15.24	16.51
IDCa001-F0802Gft-KR	16	24.92	17.78	19.05
IDCa001-F0902Gft-KR	18	27.46	20.32	21.59
IDCa001-F1002Gft-KR	20	30.00	22.86	24.13
IDCa001-F1202Gft-KR	24	35.08	27.94	29.21
IDCa001-F1302Gft-KR	26	37.62	30.48	31.75
IDCa001-F1502Gft-KR	30	42.70	35.56	36.83
IDCa001-F1702Gft-KR	34	47.78	40.64	41.91
IDCa001-F1802Gft-KR	36	50.32	43.18	44.45
IDCa001-F2002Gft-KR	40	55.40	48.26	49.53
IDCa001-F2202Gft-KR	44	60.48	53.34	54.61
IDCa001-F2502Gft-KR	50	68.10	60.96	62.23
IDCa001-F2802Gft-KR	56	75.72	68.58	69.85
IDCa001-F3002Gft-KR	60	80.80	73.66	74.93
IDCa001-F3102Gft-KR	62	83.34	76.20	77.47
IDCa001-F3202Gft-KR	64	85.88	78.74	80.01



CONNECTOR WITH STRAIN RELIEF: MMT# IDCa001-FXX02Gft-KR
 STRAIN RELIEF: MMT# IDCa001-SRxx(xx: NO. OF CONTACT)



PART NO.	POSITION	A	B
IDCa001-M0402Gft	08	15.61	7.62
IDCa001-M0502Gft	10	18.15	10.16
IDCa001-M0602Gft	12	20.69	12.70
IDCa001-M0702Gft	14	23.23	15.24
IDCa001-M0802Gft	16	25.77	17.78
IDCa001-M0902Gft	18	28.31	20.32
IDCa001-M1002Gft	20	30.85	22.86
IDCa001-M1202Gft	24	35.93	27.94
IDCa001-M1302Gft	26	38.47	30.48
IDCa001-M1502Gft	30	43.55	35.56
IDCa001-M1702Gft	34	48.63	40.64
IDCa001-M1802Gft	36	51.17	43.18
IDCa001-M2002Gft	40	56.25	48.26
IDCa001-M2502Gft	50	68.95	60.96
IDCa001-M3002Gft	60	81.65	73.66
IDCa001-M3202Gft	64	86.73	78.74



IDC - **a** - **0X1** - **X** - **XX** - **02** - **Gft** - **X** - **X** - **X**

- IDC CONNECTOR**
- PITCH 2.54x2.54 mm**
- SERIES NO. (ONLY FEMALE)**
001: BODY COLOR = BLACK
011: BODY COLOR = GRAY
- CONTACT TYPE**
F: FEMALE
M: MALE
Mk: MALE WITH KINKED PINS
- NO. OF PINS PER ROW**
- NO. OF ROW**
02
- CONTACT PLATING OPTION**
Gft: GOLD FLASH ON CONTACT, TIN PLATED ON SOLDER TAIL
- KEY OPTION (ONLY FEMALE)**
K: WITH KEY
BLANK: WITHOUT KEY
- STRAIN RELIEF OPTION (ONLY FEMALE)**
R: WITH STRAIN RELIEF
BLANK: WITHOUT STRAIN RELIEF
- COLOR OPTION**
G: GRAY
BLANK: BLACK

SPECIFICATIONS

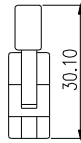
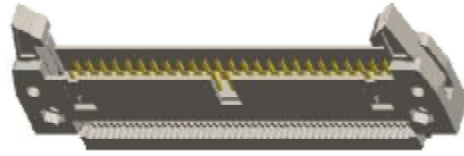
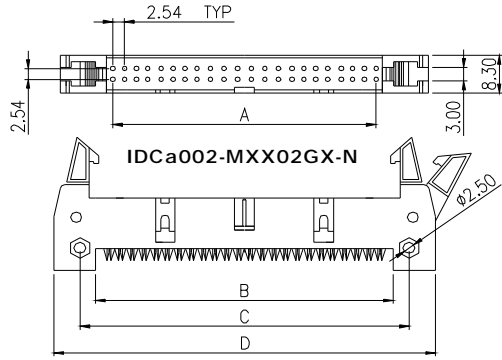
CURRENT RATING : 1 AMPS.
 INSULATOR RESISTANCE : 1000 OHM MIN.
 DIELECTRIC WITHSTANDING : AC 500 V.
 OPERATING TEMPERATURE : - 40°C ~ + 105°C
 CONTACT MATERIAL : BRASS / PHOSPHOR BRONZE

MATERIALS

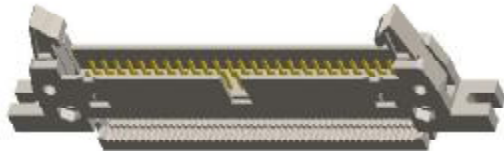
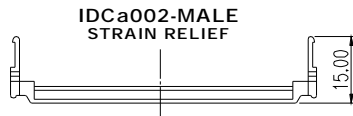
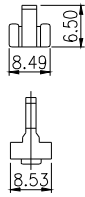
INSULATOR MATERIAL : P.B.T +30% GLASS FIBER(UL 94-V0)
 FINISH : GOLD FLASH ON CONTACT, TIN PLATED ON SOLDER TAIL

NOTE : SOME SIZES, STYLES AND OPTION ARE NON-STANDARD, NON-CANCELLABLE, NON-RETURNABLE

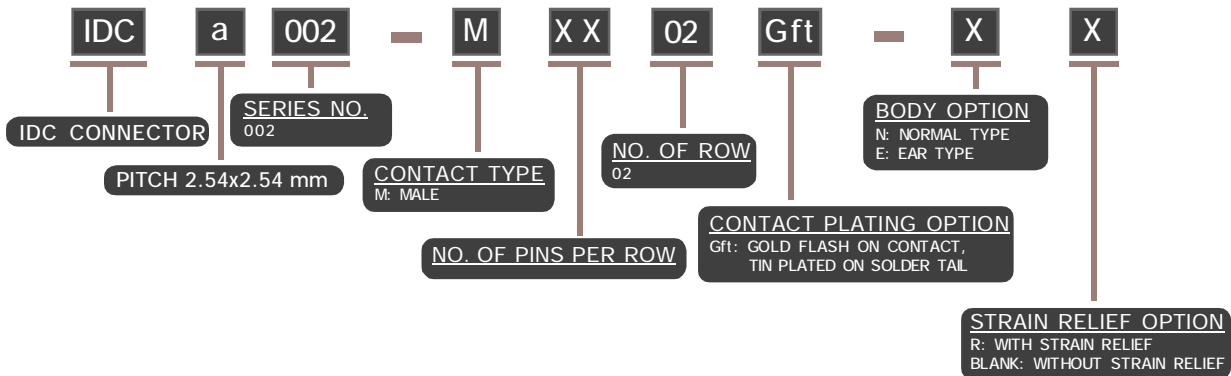
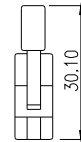
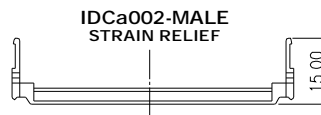
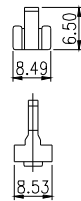
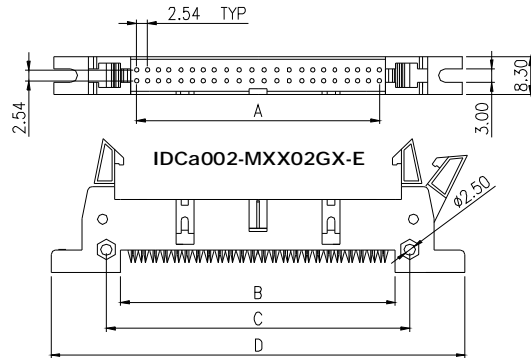
2.54x2.54 mm IDC CONNECTOR



PART NO	DIM A	DIM B	DIM C	DIM D
IDCa002-M0502Gft-N	10.16	15.36	21.86	35.96
IDCa002-M0702Gft-N	15.24	20.44	26.94	37.04
IDCa002-M0802Gft-N	17.78	22.98	29.48	39.58
IDCa002-M1002Gft-N	22.86	28.06	34.56	44.66
IDCa002-M1202Gft-N	27.94	33.14	39.64	49.74
IDCa002-M1302Gft-N	30.48	35.68	42.18	52.28
IDCa002-M1502Gft-N	35.56	40.76	47.26	57.36
IDCa002-M1702Gft-N	40.64	45.84	52.34	62.44
IDCa002-M2002Gft-N	48.26	53.66	59.96	70.26
IDCa002-M2502Gft-N	60.96	66.36	72.66	82.96
IDCa002-M3002Gft-N	73.66	79.06	85.36	95.66
IDCa002-M3202Gft-N	78.74	84.14	90.44	100.74



PART NO	DIM A	DIM B	DIM C	DIM D
IDCa002-M0502Gft-E	10.16	15.36	21.86	47.16
IDCa002-M0702Gft-E	15.24	20.44	26.94	52.24
IDCa002-M0802Gft-E	17.78	22.98	29.48	54.78
IDCa002-M1002Gft-E	22.86	28.06	34.56	59.86
IDCa002-M1202Gft-E	27.94	33.14	39.64	64.94
IDCa002-M1302Gft-E	30.48	35.68	42.18	67.48
IDCa002-M1502Gft-E	35.56	40.76	47.26	72.56
IDCa002-M1702Gft-E	40.64	45.84	52.34	77.76
IDCa002-M2002Gft-E	48.26	53.66	59.96	85.38
IDCa002-M2502Gft-E	60.96	66.36	72.66	98.08
IDCa002-M3002Gft-E	73.66	79.06	85.36	110.78
IDCa002-M3202Gft-E	78.74	84.14	90.44	115.86



SPECIFICATIONS

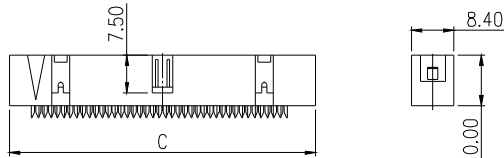
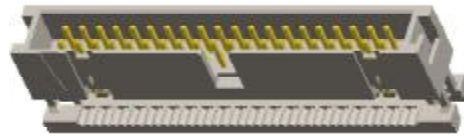
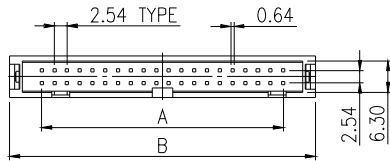
CURRENT RATING : 1 AMPS.
 INSULATOR RESISTANCE : 5000 OHM MIN.
 DIELECTRIC WITHSTANDING : AC 500 V.
 OPERATING TEMPERATURE : - 40°C ~ + 105°C
 CONTACT MATERIAL : BRASS

MATERIALS

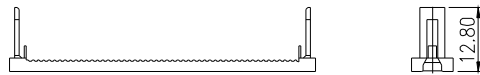
INSULATOR MATERIAL : P.B.T + GLASS FIBER (UL 94V-0)
 FINISH : GOLD FLASH ON CONTACT, TIN PLATED ON SOLDER TAIL

NOTE : SOME SIZES, STYLES AND OPTION ARE NON-STANDARD, NON-CANCELLABLE, NON-RETURNABLE

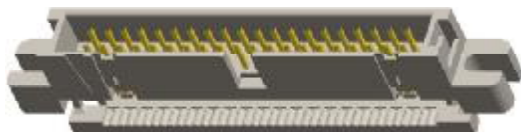
2.54x2.54 mm IDC CONNECTOR



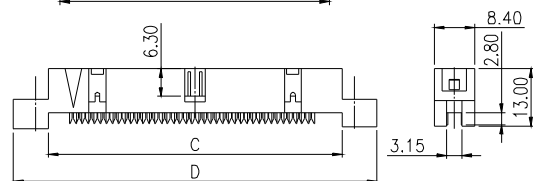
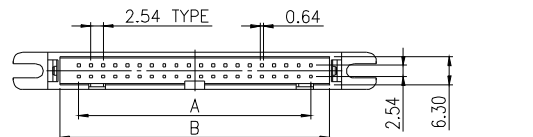
IDCa003-MXX02GX-N



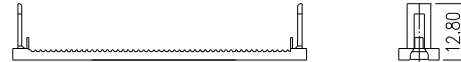
IDCa003-MALE STRAIN RELIEF



PART NO.	CIRCUITS	DIMENSION		
		A	B	C
IDCa003-M0502Gft-N	2X5	10.6	18.16	22.96
IDCa003-M0702Gft-N	2X7	15.24	23.08	28.08
IDCa003-M0802Gft-N	2X8	17.78	25.62	30.62
IDCa003-M1002Gft-N	2X10	22.86	30.70	35.70
IDCa003-M1202Gft-N	2X12	27.94	35.78	40.78
IDCa003-M1302Gft-N	2X13	30.48	38.32	43.32
IDCa003-M1502Gft-N	2X15	35.56	43.40	48.40
IDCa003-M1702Gft-N	2X17	40.64	48.48	53.48
IDCa003-M2002Gft-N	2X20	48.26	56.10	61.10
IDCa003-M2502Gft-N	2X25	60.96	68.80	73.80
IDCa003-M3002Gft-N	2X30	73.66	81.50	86.50
IDCa003-M3202Gft-N	2X32	78.74	86.68	91.58



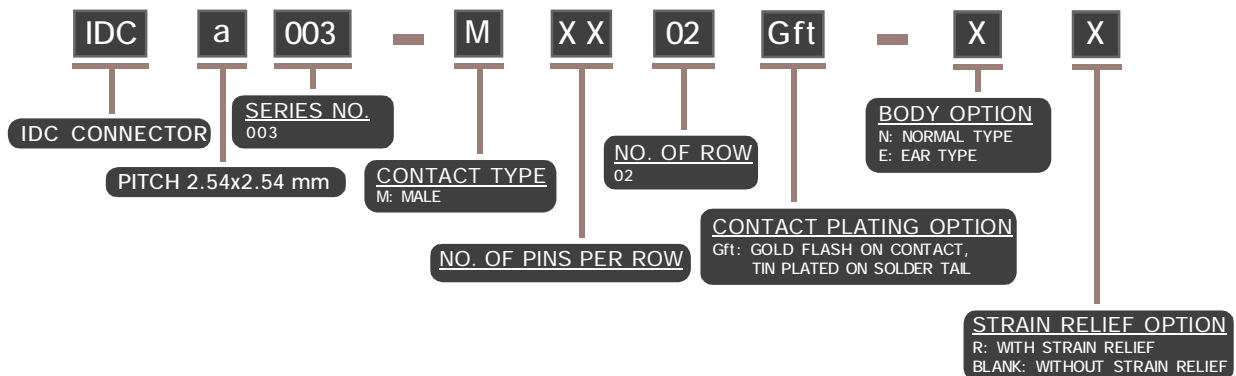
IDCa003-MXX02GX-E



IDCa003-MALE STRAIN RELIEF



PART NO.	CIRCUITS	DIMENSION			
		A	B	C	D
IDCa003-M0502Gft-E	2X5	10.6	18.16	22.96	57.26
IDCa003-M0702Gft-E	2X7	15.24	23.08	28.08	42.34
IDCa003-M0802Gft-E	2X8	17.78	25.62	30.62	44.88
IDCa003-M1002Gft-E	2X10	22.86	30.70	35.70	50.06
IDCa003-M1202Gft-E	2X12	27.94	35.78	40.78	55.14
IDCa003-M1302Gft-E	2X13	30.48	38.32	43.32	57.68
IDCa003-M1502Gft-E	2X15	35.56	43.40	48.40	62.76
IDCa003-M1702Gft-E	2X17	40.64	48.48	53.48	67.89
IDCa003-M2002Gft-E	2X20	48.26	56.10	61.10	75.56
IDCa003-M2502Gft-E	2X25	60.96	68.80	73.80	88.26
IDCa003-M3002Gft-E	2X30	73.66	81.50	86.50	100.91
IDCa003-M3202Gft-E	2X32	78.74	86.68	91.58	106.04



SPECIFICATIONS

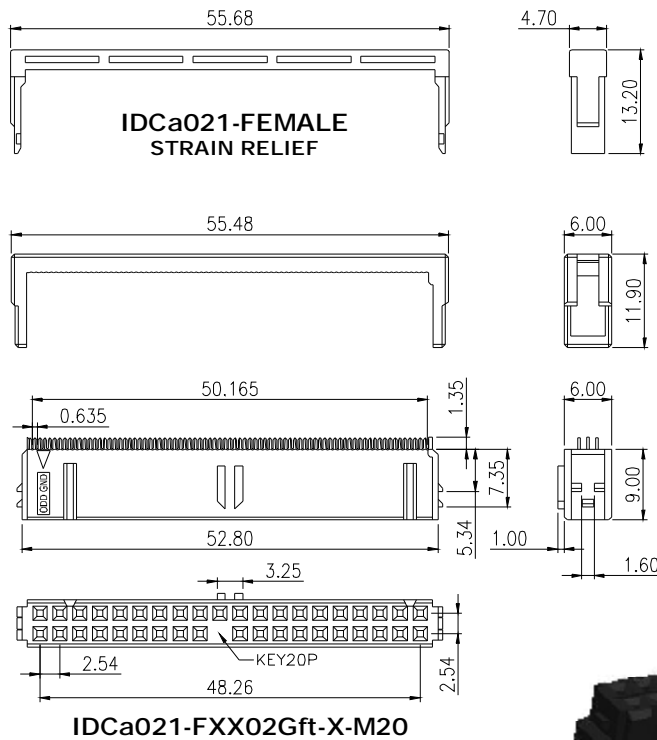
CURRENT RATING : 1 AMPS.
 INSULATOR RESISTANCE : 1000 OHM MIN.
 DIELECTRIC WITHSTANDING : AC 500 V.
 OPERATING TEMPERATURE : - 55°C ~ + 105°C
 CONTACT MATERIAL : BRASS

MATERIALS

INSULATOR MATERIAL : P.B.T + 30% GLASS FIBER (UL 94V-0)
 FINISH : GOLD FLASH ON CONTACT, TIN PLATED ON SOLDER TAIL

NOTE : SOME SIZES, STYLES AND OPTION ARE NON-STANDARD, NON-CANCELLABLE, NON-RETURNABLE

2.54x2.54 mm IDC CONNECTOR



GROUNDING CONNECTION:

MASTER(BLACK): PIN NO. 2, 19, 22, 24, 26, 30, 40.

SLAVE(GRAY): PIN NO. 2, 19, 22, 24, 26, 30, 40.

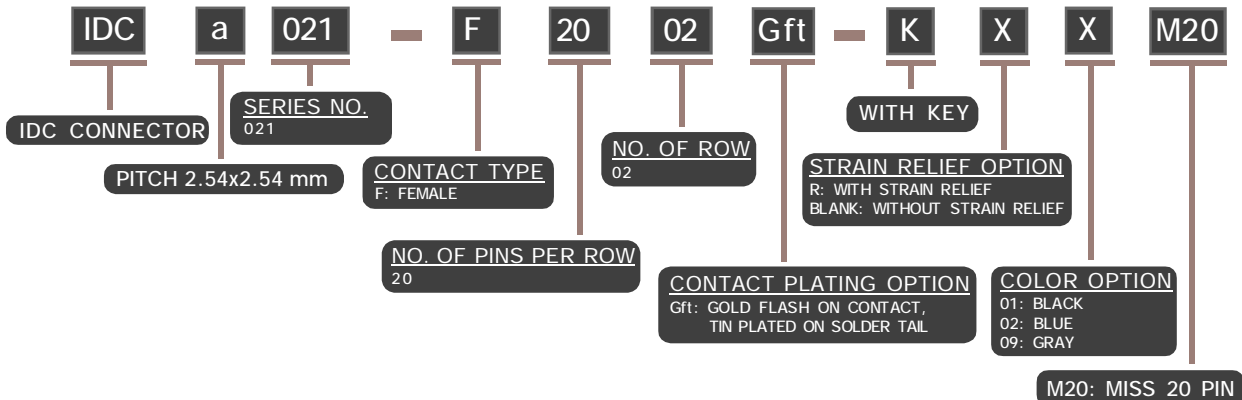
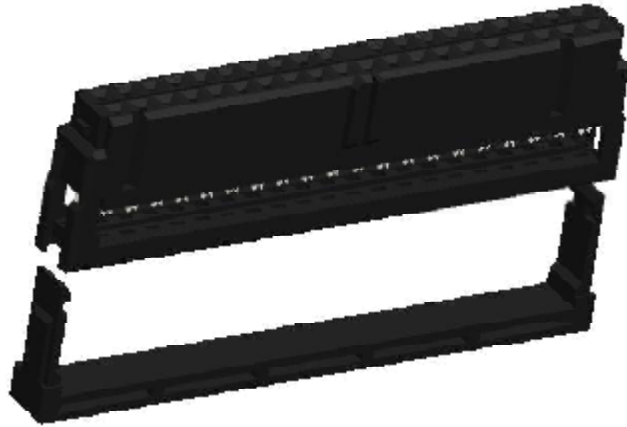
SYSTEM(BLUE): PIN NO. 2, 19, 22, 24, 26, 30, 34, 40.

ASSEMBLY OF THE PINS:

MASTER(BLACK): FULL PIN

SLAVE(GRAY): PULL PIN NO. 28.

SYSTEM(BLUE): CUT PIN NO. 34.



SPECIFICATIONS

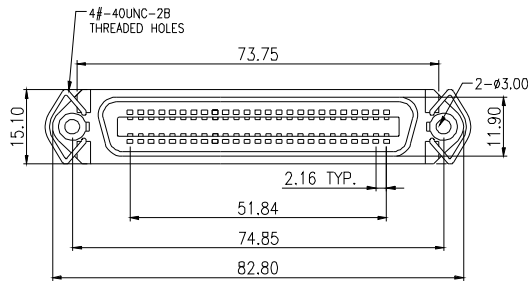
CURRENT RATING : 1 AMPS.
 INSULATOR RESISTANCE : 1000 OHM MIN.
 DIELECTRIC WITHSTANDING : AC 500 V.
 OPERATING TEMPERATURE : - 40°C ~ + 105°C.
 CONTACT MATERIAL : COPPER ALLOY.

MATERIALS

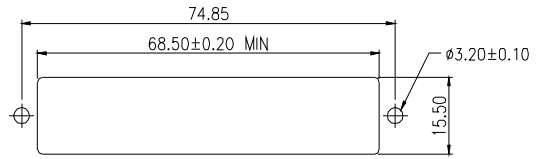
INSULATOR MATERIAL : P.B.T + 30% GLASS FIBER (UL 94V-0)
 FINISH : GOLD FLASH ON CONTACT, TIN PLATED ON SOLDER TAIL

NOTE : SOME SIZES, STYLES AND OPTION ARE NON-STANDARD, NON-CANCELLABLE, NON-RETURNABLE

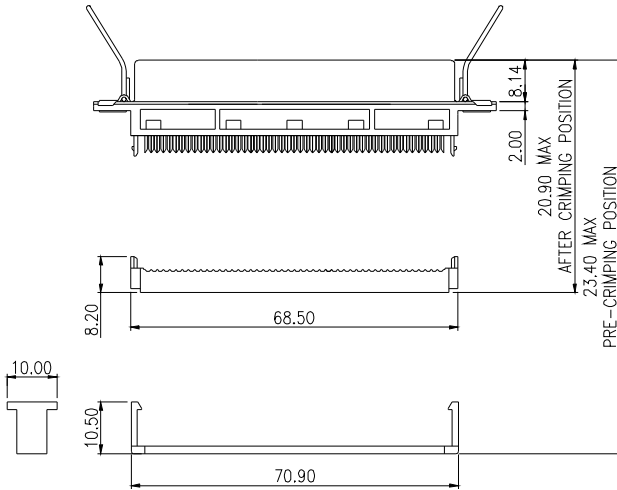
IDC RIBBON CONNECTOR



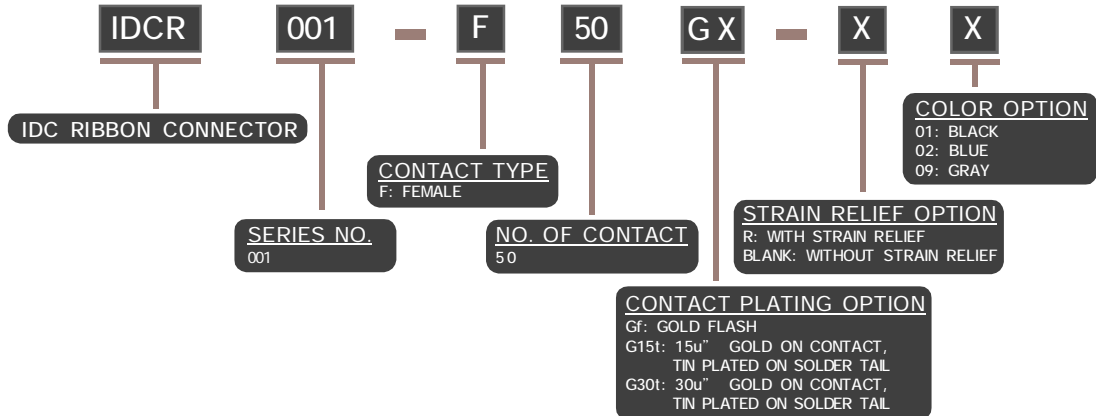
IDCR001-F500GXXX



RECOMMEND FRONT MOUNT PANEL



IDCR001-FEMALE STRAIN RELIEF



SPECIFICATIONS

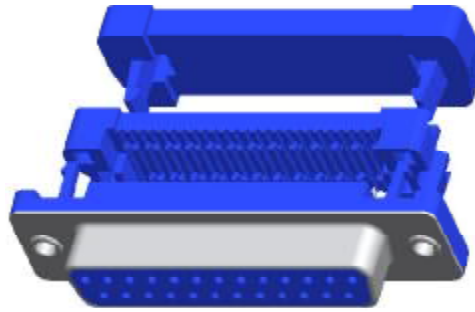
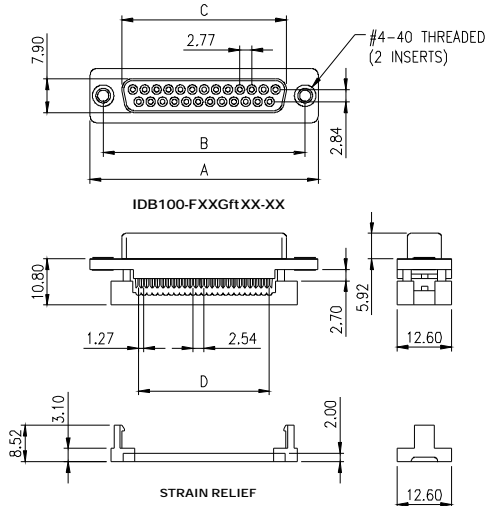
CURRENT RATING : 1A: AWG 28 / 1, 2A: AWG 26.
 INSULATOR RESISTANCE : 1000 OHM MIN.
 DIELECTRIC WITHSTANDING : AC 500 V.
 OPERATING TEMPERATURE : - 55°C ~ + 105°C
 CONTACT MATERIAL : PHOSPHOR BRONZE.

MATERIALS

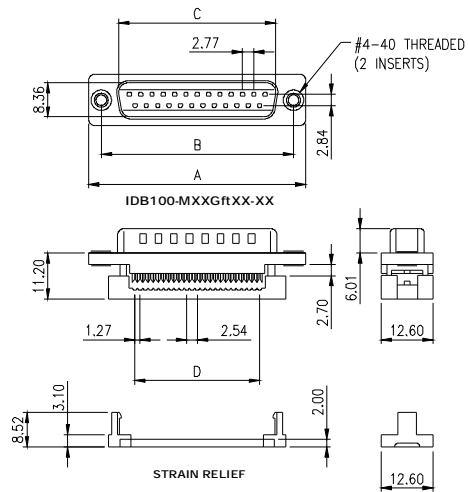
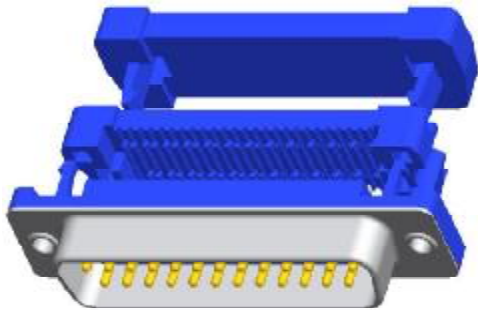
INSULATOR MATERIAL : P.B.T & GLASS REINFORCED (UL 94V-0)
 FINISH : GOLD OVER NICKEL

NOTE : SOME SIZES, STYLES AND OPTION ARE NON-STANDARD, NON-CANCELLABLE, NON-RETURNABLE

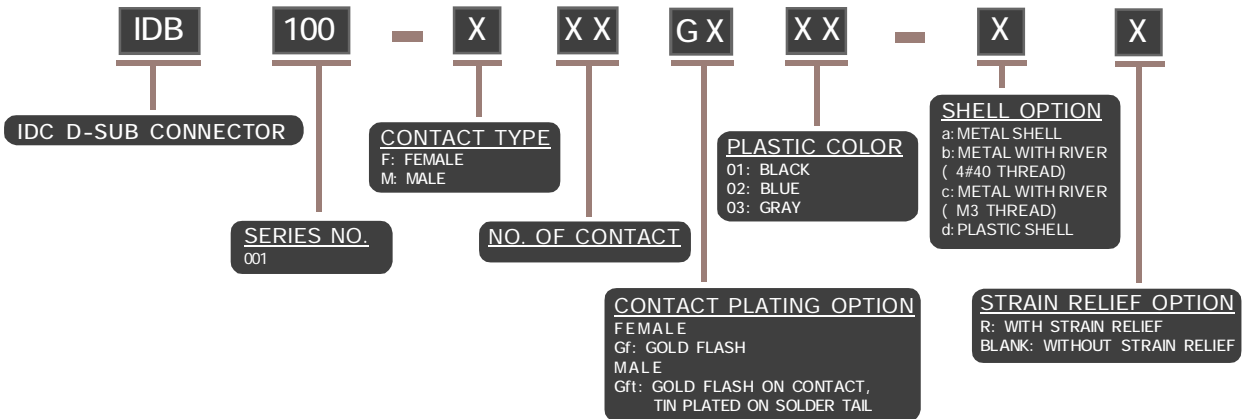
IDC D-SUB CONNECTOR



PART NO.	NO. OF CONTACTS	DIMENSION				
		A	B	C	D	E
IDB100-F09GXXX-XX	9	30.89	24.99	16.33	10.16	21.78
IDB100-F15GXXX-XX	15	39.14	33.32	24.66	17.78	29.62
IDB100-F25GXXX-XX	25	53.09	47.04	38.38	30.48	43.35
IDB100-F37GXXX-XX	37	69.39	63.50	54.84	45.72	59.92



PART NO.	NO. OF CONTACTS	DIMENSION				
		A	B	C	D	E
IDB100-M09GXXX-XX	9	30.89	24.99	16.92	10.16	21.78
IDB100-M15GXXX-XX	15	39.14	33.32	25.25	17.78	29.62
IDB100-M25GXXX-XX	25	53.09	47.04	38.96	30.48	43.35
IDB100-M37GXXX-XX	37	69.39	63.50	55.45	45.72	59.92



SPECIFICATIONS

WIRE SIZE: AWG 26 ~28
 DIELECTRIC MATERIAL: P.B.T + 30% G.F. UL94V-0
 INSULATOR RESISTANCE : 1000 MOHM AT 500 VDC.
 OPERATING TEMPERATURE : - 55°C ~ + 105°C
 CONTACT RESISTANCE: 15 mOHM MAX.

MATERIALS

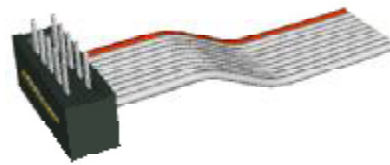
CONTACT MATERIAL : PHOSPHOR BRONZE.
 FINISH : GOLD OVER NICKEL

NOTE : SOME SIZES, STYLES AND OPTION ARE NON-STANDARD, NON-CANCELLABLE, NON-RETURNABLE

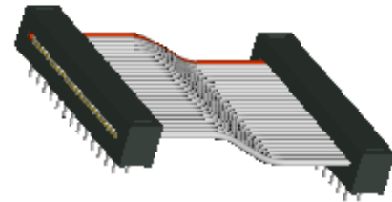
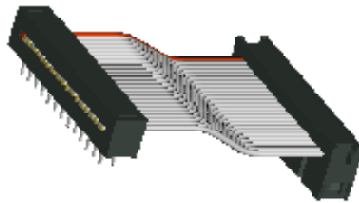
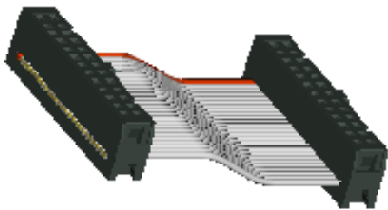
1.27 / 2.00 / 2.54 mm IDC CABLE ASSEMBLY



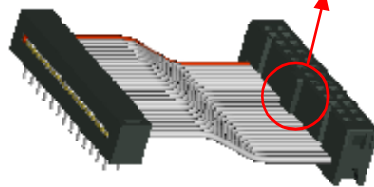
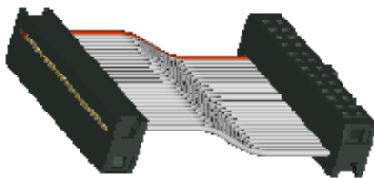
FEMALE



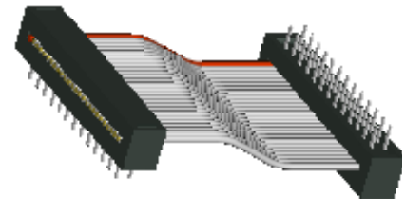
MALE



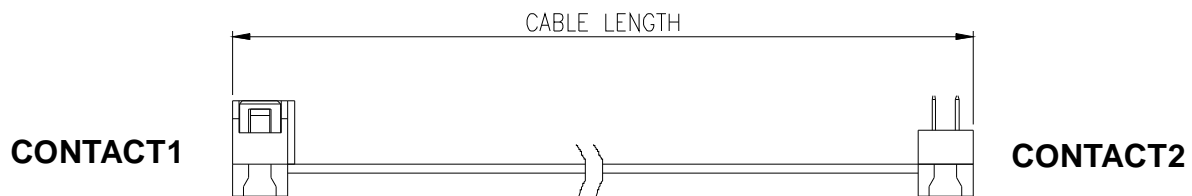
STANDARD TYPE



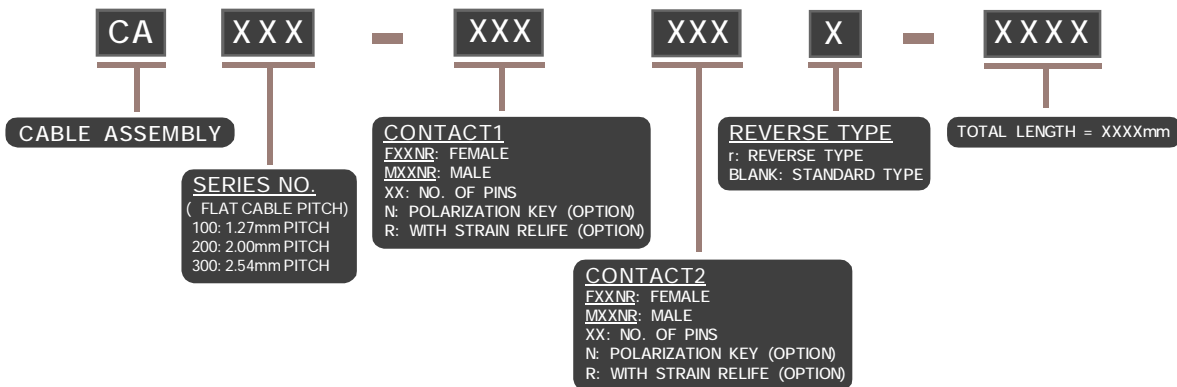
KEY OPTION



REVERSE TYPE

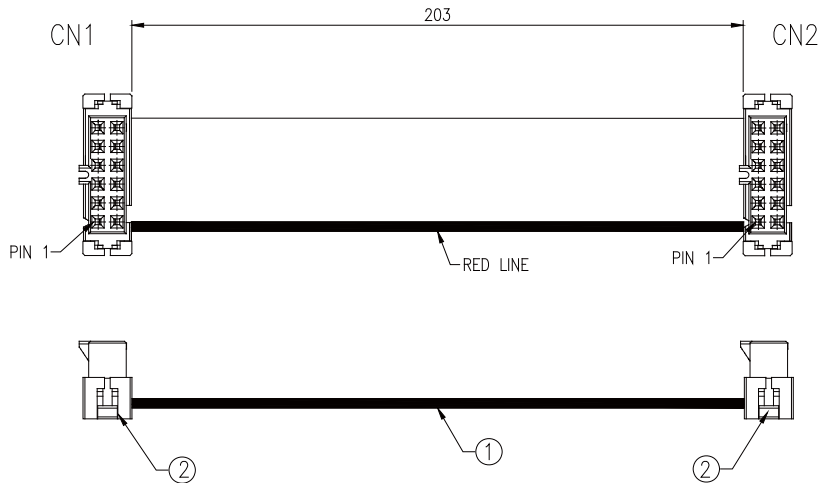


ASSEMBLY LENGTH



2.00mm IDC CABLE ASSEMBLY

MODEL NAME *IDC210-FF12N-203*

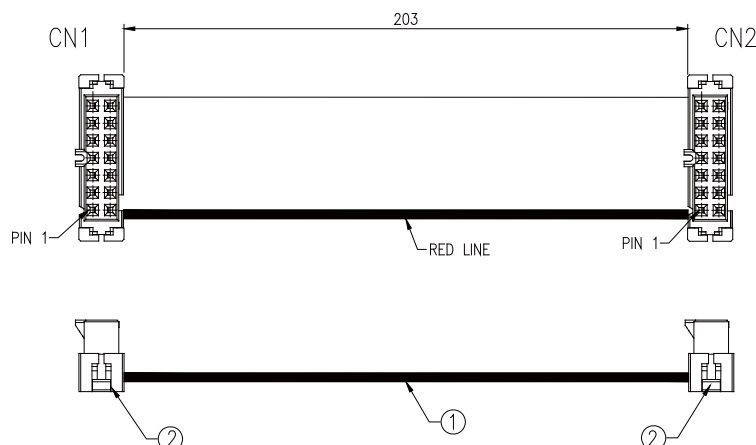


ORDER INFORMATION:
 CA210A-FF12N-203
 CA: CABLE ASSEMBLY
 210A: SERIES NO., 2.00mm PITCH HEADER
 FF: FEMALE HEADER TO FEMALE HEADER
 12: NUMBER OF CIRCUIT
 N: WITH KEY
 203: CABLE LENGTH=203mm

2	IDC SOCKET, PITCH: 2.00mm, COLOR: BLACK; MMT#IDCb403-F0602Gft-K	2	SET
1	FLAT CABLE PH:1.00mm UL2651, 28AWG	1	SET
NO	DESCRIPTION	Q'TY	UNIT

2.00mm IDC CABLE ASSEMBLY

MODEL NAME *IDC210-FF14N-203*



ORDER INFORMATION:
 CA210A-FF14N-203
 CA: CABLE ASSEMBLY
 210A: SERIES NO., 2.00mm PITCH HEADER
 FF: FEMALE HEADER TO FEMALE HEADER
 14: NUMBER OF CIRCUIT
 N: WITH KEY
 203: CABLE LENGTH=203mm

2	IDC SOCKET, PITCH: 2.00mm, COLOR: BLACK; MMT#IDCb403-F0702Gft-K	2	SET
1	FLAT CABLE PH:1.00mm UL2651, 28AWG	1	SET
NO	DESCRIPTION	Q'TY	UNIT

NOTE: SOME SIZES, STYLES AND OPTIONS ARE NON-STANDARD, NON-CANCELLABLE AND NON-RETURNABLE.