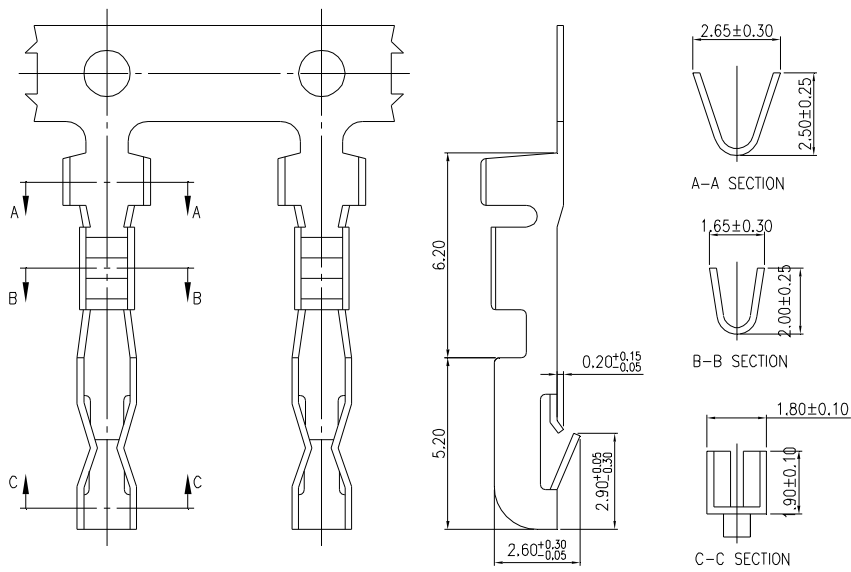


MMI

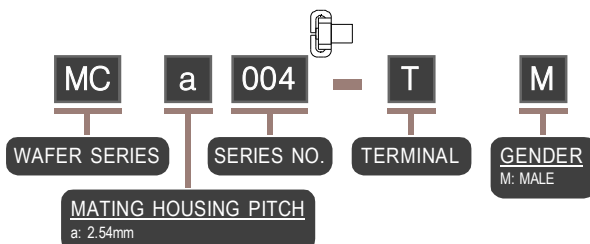
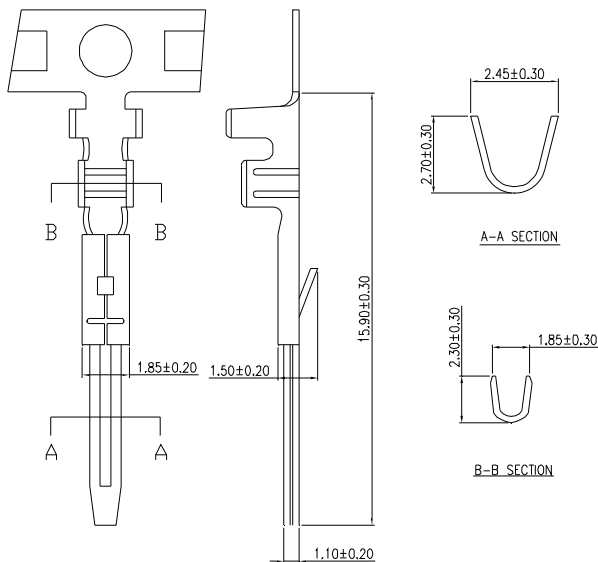
**WAFER, HOUSING & TERMINAL
PITCH: 2.54x2.54mm**

TERMINAL- MCa 002



WIRE RANGE: AWG #18 - #22
 MATERIAL: PHOSPHOR BRONZE
 FINISH: TIN PLATED

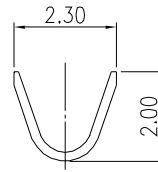
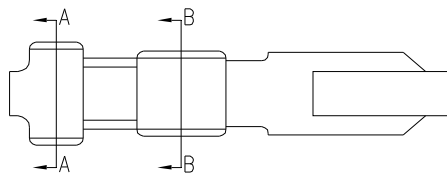
TERMINAL- MCa 004



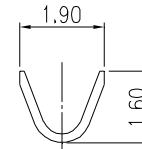
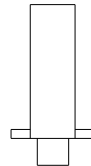
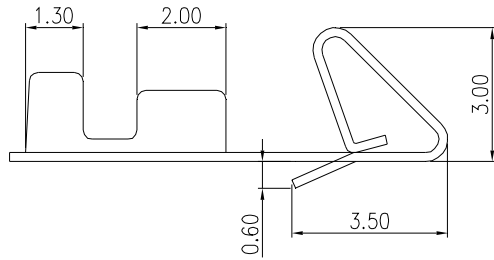
WIRE RANGE: AWG #18 - #22
 MATERIAL: PHOSPHOR BRONZE
 FINISH: TIN PLATED

NOTE : SOME SIZES, STYLES AND OPTION ARE NON-STANDARD, NON-CANCELLABLE, NON-RETURNABLE

TERMINAL- MCa 006



A-A SECTION



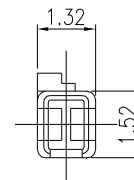
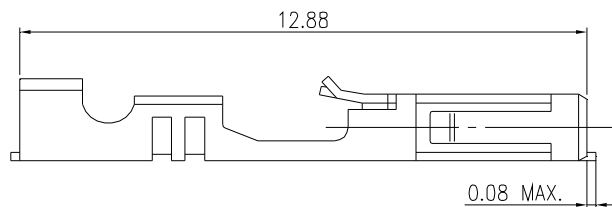
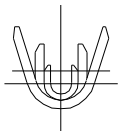
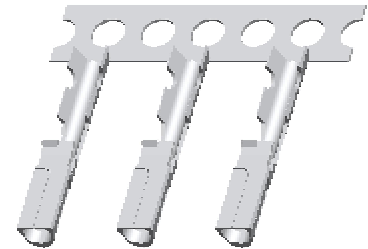
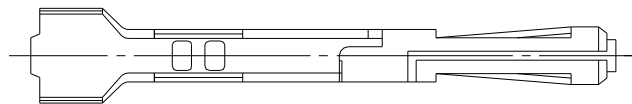
B-B SECTION



MATING HOUSING PITCH
a: 2.54mm

WIRE RANGE: AWG #22 - #28
MATERIAL: PHOSPHOR BRONZE
FINISH: TIN PLATED

TERMINAL- MCa 007

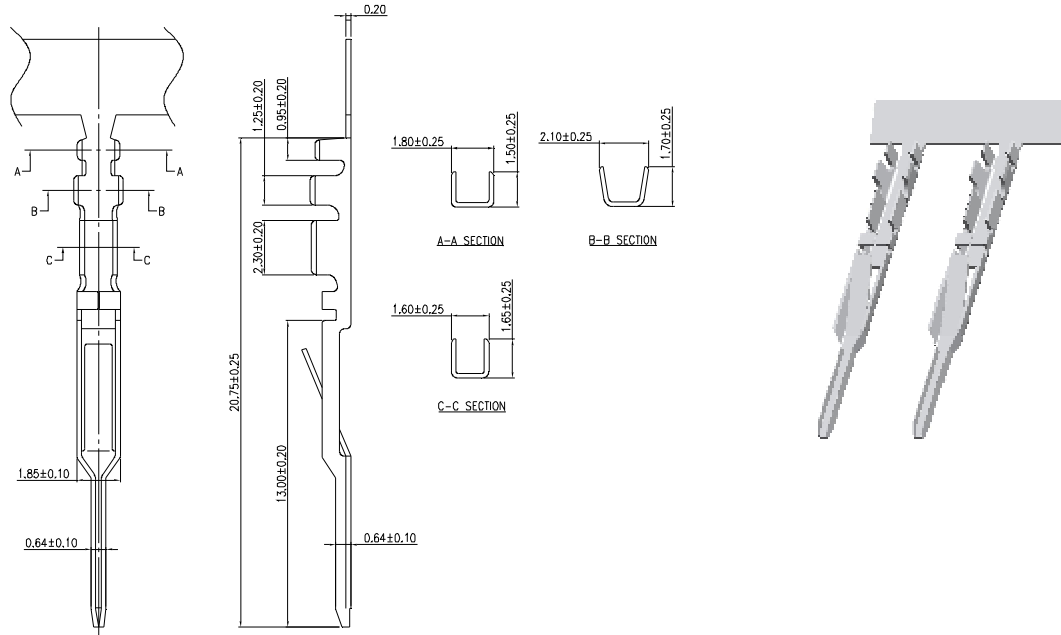


MATING HOUSING PITCH
a: 2.54mm

WIRE RANGE: AWG #22 - #30
MATERIAL: PHOSPHOR BRONZE
FINISH: TIN PLATED
THICKNESS: 0.20mm

NOTE : SOME SIZES, STYLES AND OPTION ARE NON-STANDARD, NON-CANCELLABLE, NON-RETURNABLE

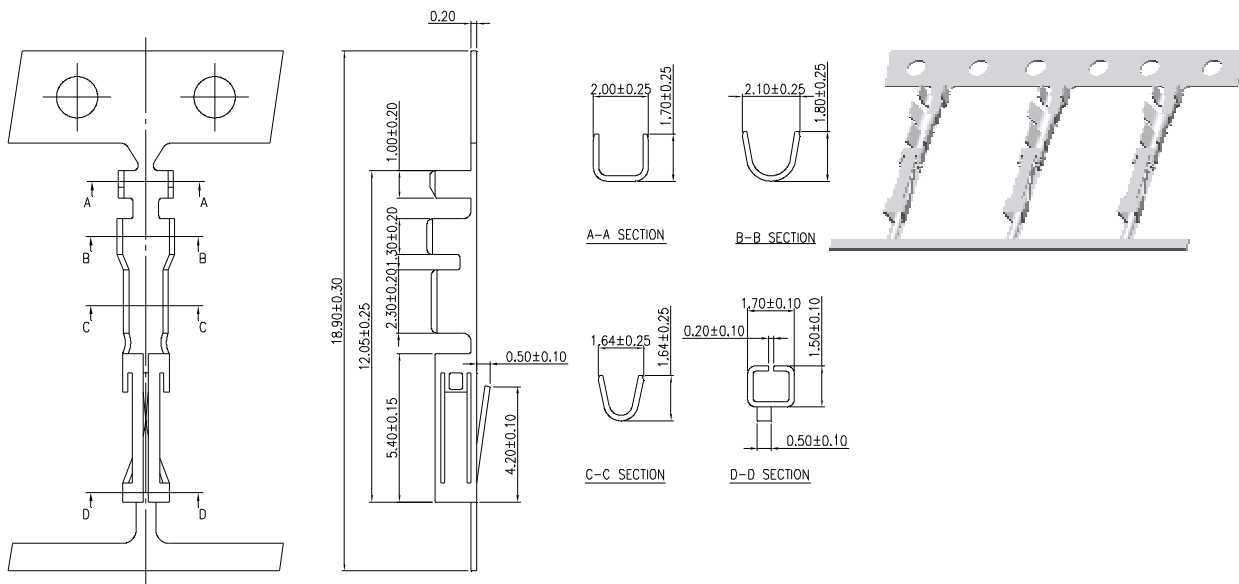
TERMINAL- MCa 009 (MALE)



MC **a** **009** **T** **M**
 WAFER SERIES SERIES NO. TERMINAL GENDER
 M: MALE
 MATING HOUSING PITCH
 a: 2.54mm

WIRE RANGE: AWG #28 - #30
 INSULATION O.D.: 1.30mm MAX.
 MATERIAL: BRASS
 FINISH: TIN PLATED

TERMINAL- MCa 009 (FEMALE)

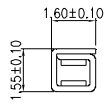
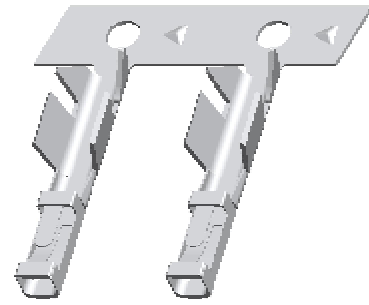
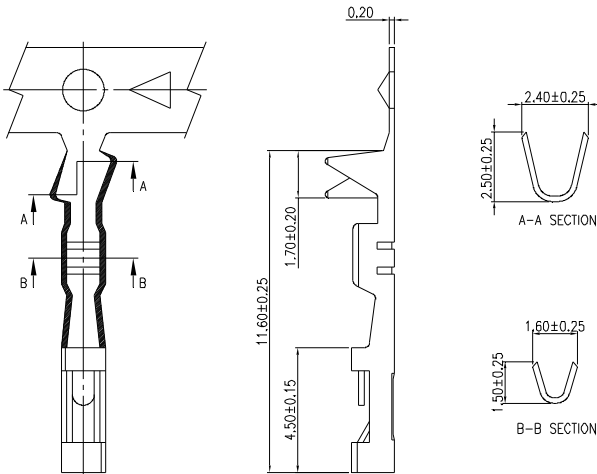


MC **a** **009** **T** **F**
 WAFER SERIES SERIES NO. TERMINAL GENDER
 F: FEMALE
 MATING HOUSING PITCH
 a: 2.54mm

WIRE RANGE: AWG #28 - #30
 INSULATION O.D.: 1.30mm MAX.
 MATERIAL: PHOSPHOR BRONZE
 FINISH: TIN PLATED

NOTE : SOME SIZES, STYLES AND OPTION ARE NON-STANDARD, NON-CANCELLABLE, NON-RETURNABLE

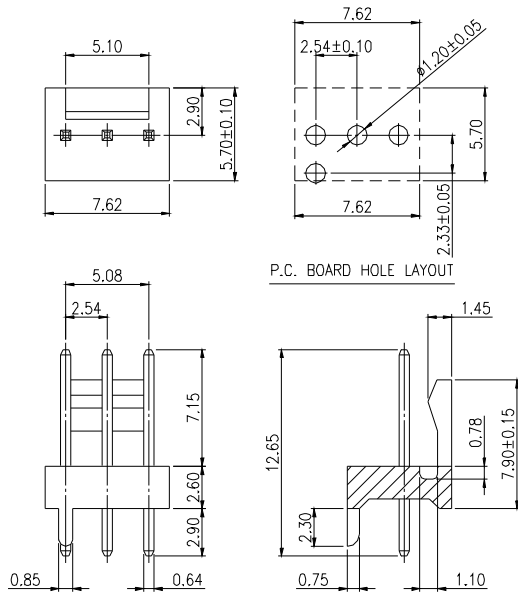
TERMINAL- MCa 021



WIRE RANGE: AWG #22 - #26
 INSULATION O.D.: 1.70mm MAX.
 MATERIAL: BRASS
 FINISH: TIN PLATED

NOTE : SOME SIZES, STYLES AND OPTION ARE NON-STANDARD, NON-CANCELLABLE, NON-RETURNABLE

2.54 mm WAFER - MCa 001 STRAIGHT TYPE - P (WITH PLASTIC PEG)

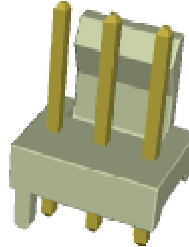


SPECIFICATIONS

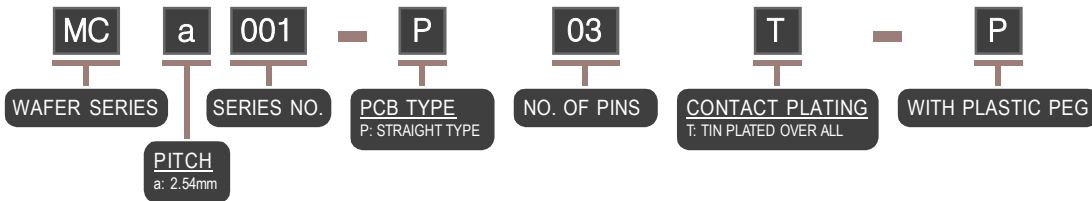
VOLTAGE RATING: 250V AC/DC
 CURRENT RATING: 3A AC/DC
 WITHSTAND VOLTAGE: 1000V AC/MINUTE
 INSULATOR RESISTANCE: 1000M OHM MIN.
 TEMPERATURE RANGE: -25°C ~ +85°C
 CONTACT RESISTANCE: 20m OHM MAX.

MATERIALS

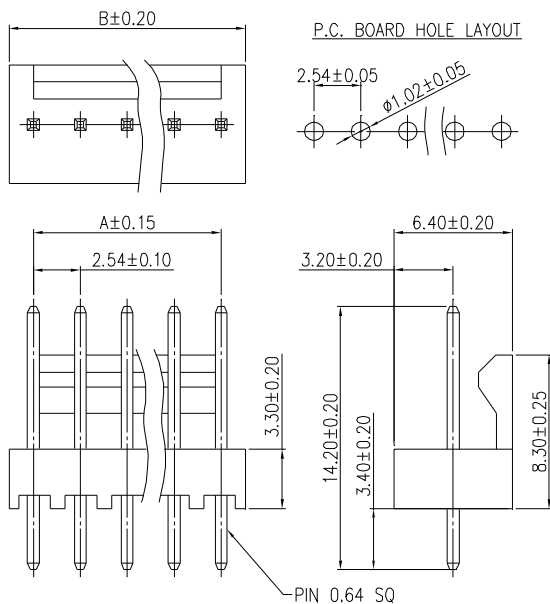
CONTACT: BRASS, TIN PLATED
 BASE: NYLON 66 UL 94V-0



MATING CONNECTOR	
PRODUCT	PART NO.
HOUSING	MCa006-__-HLP
TERMINAL	MCa006-T



2.54 mm WAFER - MCa 001 STRAIGHT TYPE - P

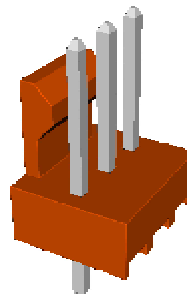


SPECIFICATIONS

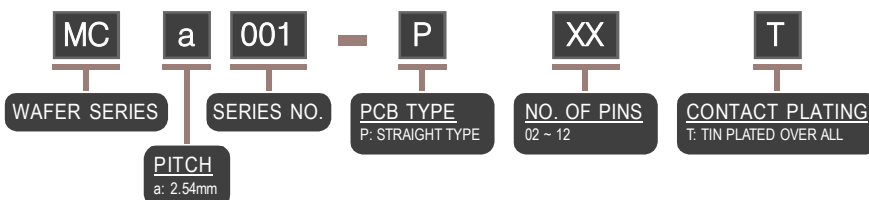
CURRENT RATING: 4A
 WITHSTAND VOLTAGE: 1500V
 INSULATOR RESISTANCE: 500M OHM MIN.
 TEMPERATURE RANGE: -40°C ~ +105°C

MATERIALS

BASE: NYLON 66 UL 94V-0



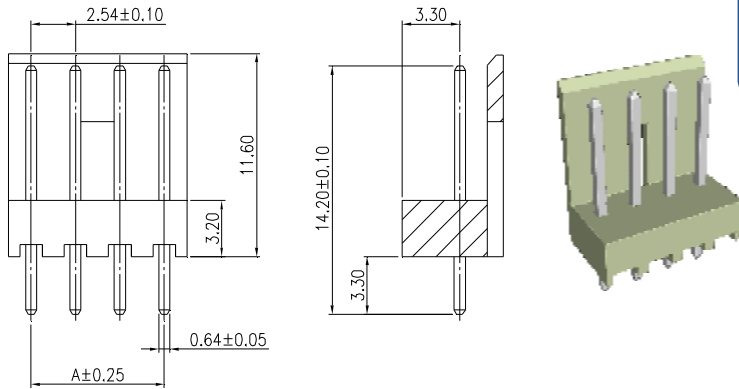
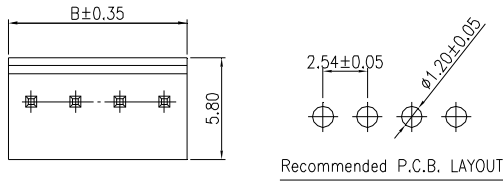
MATING CONNECTOR	
PRODUCT	PART NO.
HOUSING	MCa006-__-HLP
TERMINAL	MCa006-T



PART NO.	POLES	DIMENSION	
		A	B
MCa001-P02T	2	2.54	5.10
MCa001-P03T	3	5.08	7.68
MCa001-P04T	4	7.62	10.24
MCa001-P05T	5	10.16	12.78
MCa001-P06T	6	12.70	15.24
MCa001-P07T	7	15.24	17.88
MCa001-P08T	8	17.78	20.44
MCa001-P09T	9	20.32	23.00
MCa001-P10T	10	22.86	25.54
MCa001-P11T	11	25.40	28.10
MCa001-P12T	12	27.94	30.64

NOTE : SOME SIZES, STYLES AND OPTION ARE NON-STANDARD, NON-CANCELLABLE, NON-RETURNABLE

2.54 mm WAFER - MCa 002 STRAIGHT TYPE - P



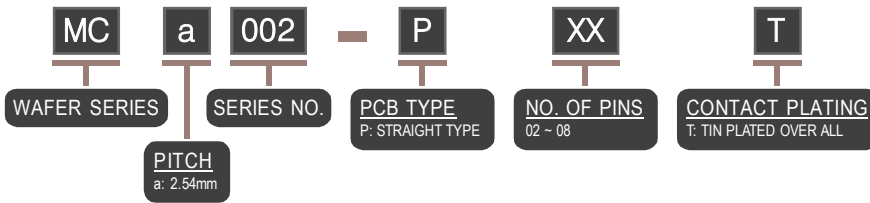
SPECIFICATIONS

VOLTAGE RATING: 250V AC/DC
 CURRENT RATING: 3A AC/DC
 WITHSTAND VOLTAGE: 1000V AC/MINUTE
 INSULATOR RESISTANCE: 1000M OHM MIN.
 TEMPERATURE RANGE: -40°C ~ +85°C
 CONTACT RESISTANCE: INITIAL VALUE 20m OHM MAX.
 AFTER ENVIRONMENT TESTING: 20m OHM MAX.

MATERIALS

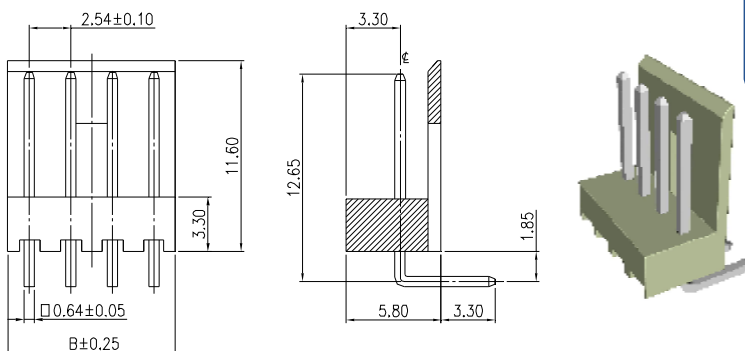
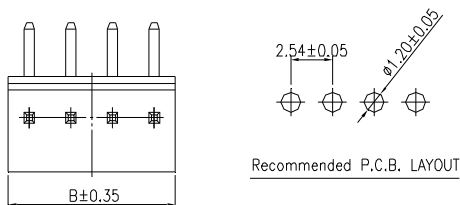
CONTACT: BRASS, TIN PLATED
 BASE: NYLON 66 UL 94V-0

MATING CONNECTOR	
PRODUCT	PART NO.
HOUSING	MCa002-__-H
TERMINAL	MCa002-T



PART NO.	POLES	DIMENSION	
		A	B
MCa002-P02T	2	2.54	5.08
MCa002-P03T	3	5.08	7.60
MCa002-P04T	4	7.62	10.16
MCa002-P05T	5	10.16	12.70
MCa002-P06T	6	12.70	15.24
MCa002-P07T	7	15.24	17.78
MCa002-P08T	8	17.78	20.32

2.54 mm WAFER - MCa 002 RIGHT ANGLE TYPE - Pa



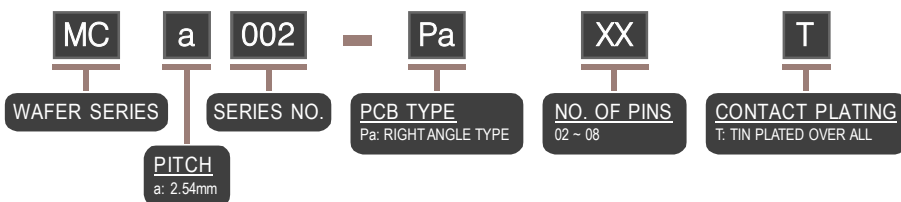
SPECIFICATIONS

VOLTAGE RATING: 250V AC/DC
 CURRENT RATING: 3A AC/DC
 WITHSTAND VOLTAGE: 1000V AC/MINUTE
 INSULATOR RESISTANCE: 1000M OHM MIN.
 TEMPERATURE RANGE: -25°C ~ +85°C
 CONTACT RESISTANCE: INITIAL VALUE 10m OHM MAX.
 AFTER ENVIRONMENT TESTING: 20m OHM MAX.

MATERIALS

CONTACT: BRASS, TIN PLATED
 BASE: NYLON 66 UL 94V-0

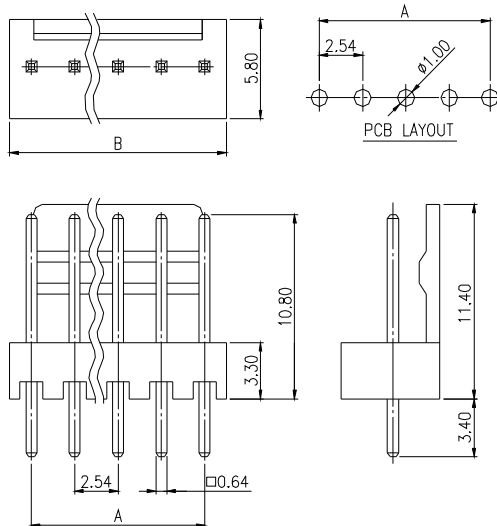
MATING CONNECTOR	
PRODUCT	PART NO.
HOUSING	MCa002-__-H
TERMINAL	MCa002-T



PART NO.	POLES	DIMENSION	
		A	B
MCa002-Pa02T	2	2.54	5.08
MCa002-Pa03T	3	5.08	7.60
MCa002-Pa04T	4	7.62	10.16
MCa002-Pa05T	5	10.16	12.70
MCa002-Pa06T	6	12.70	15.24
MCa002-Pa07T	7	15.24	17.78
MCa002-Pa08T	8	17.78	20.32

NOTE : SOME SIZES, STYLES AND OPTION ARE NON-STANDARD, NON-CANCELLABLE, NON-RETURNABLE

2.54 mm WAFER - MCa 003 STRAIGHT TYPE - P



SPECIFICATIONS

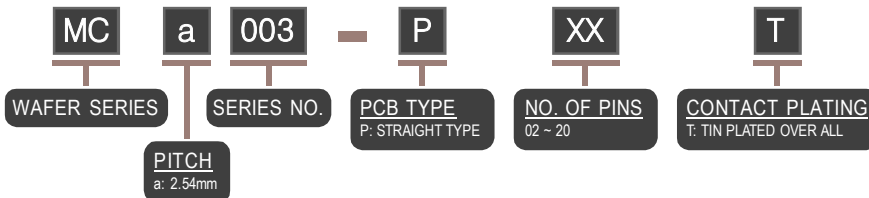
VOLTAGE RATING: 250V AC/DC
 CURRENT RATING: 3A AC/DC
 WITHSTAND VOLTAGE: 800V AC/MINUTE
 INSULATOR RESISTANCE: DC 500V, 1000M OHM MIN.
 TEMPERATURE RANGE: -25°C ~ +85°C
 CONTACT RESISTANCE: INITIAL VALUE 10m OHM MAX.
 AFTER ENVIRONMENT TESTING: 20m OHM MAX.
 APPLICABLE BOARD THICKNESS: 1.60mm

MATERIALS

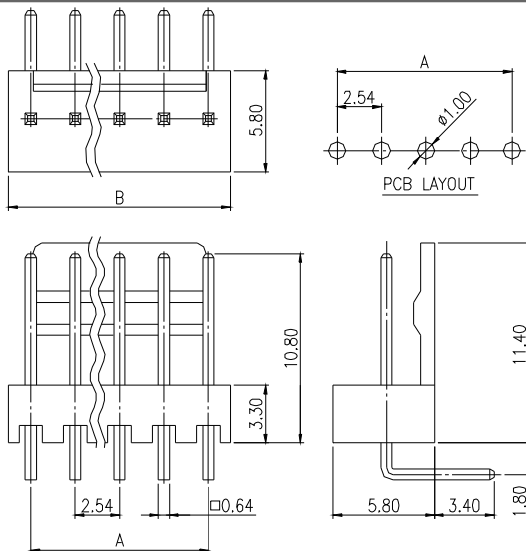
CONTACT: BRASS, TIN PLATED
 BASE: NYLON 66 UL 94V-0

MATING CONNECTOR	
PRODUCT	PART NO.
HOUSING	MCa006-__-HP
TERMINAL	MCa006-T

PART NO.	POLES	DIMENSION	
		A	B
MCa003-P02T	2	2.54	5.08
MCa003-P03T	3	5.08	7.62
MCa003-P04T	4	7.60	10.16
MCa003-P05T	5	10.16	12.70
MCa003-P06T	6	12.70	15.24
MCa003-P07T	7	15.24	17.78
MCa003-P08T	8	17.78	20.32
MCa003-P09T	9	20.32	22.86
MCa003-P10T	10	22.86	25.40
MCa003-P11T	11	25.40	27.94
MCa003-P12T	12	27.94	30.48
MCa003-P13T	13	30.48	33.02
MCa003-P14T	14	33.02	35.56
MCa003-P15T	15	35.56	38.10
MCa003-P16T	16	38.10	40.64
MCa003-P17T	17	40.64	43.18
MCa003-P18T	18	43.18	45.72
MCa003-P19T	19	45.72	48.26
MCa003-P20T	20	48.26	50.80



2.54 mm WAFER - MCa 003 RIGHT ANGEL TYPE - Pa



SPECIFICATIONS

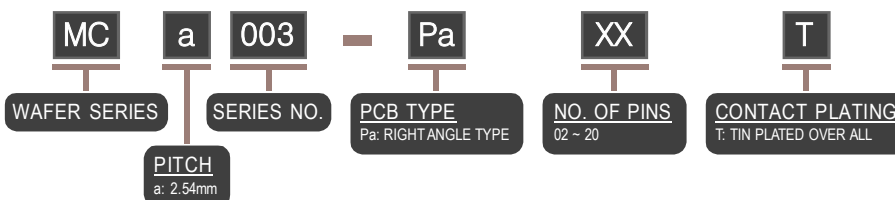
VOLTAGE RATING: 250V AC/DC
 CURRENT RATING: 3A AC/DC
 WITHSTAND VOLTAGE: 800V AC/MINUTE
 INSULATOR RESISTANCE: DC 500V, 1000M OHM MIN.
 TEMPERATURE RANGE: -25°C ~ +85°C
 CONTACT RESISTANCE: INITIAL VALUE 10m OHM MAX.
 AFTER ENVIRONMENT TESTING: 20m OHM MAX.
 APPLICABLE BOARD THICKNESS: 1.60mm

MATERIALS

CONTACT: BRASS, TIN PLATED
 BASE: NYLON 66 UL 94V-0

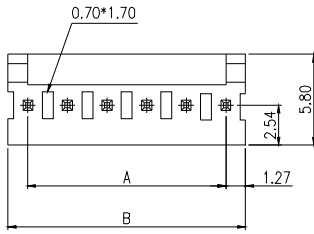
MATING CONNECTOR	
PRODUCT	PART NO.
HOUSING	MCa006-__-HP
TERMINAL	MCa006-T

PART NO.	POLES	DIMENSION	
		A	B
MCa003-Pa02T	2	2.54	5.08
MCa003-Pa03T	3	5.08	7.62
MCa003-Pa04T	4	7.60	10.16
MCa003-Pa05T	5	10.16	12.70
MCa003-Pa06T	6	12.70	15.24
MCa003-Pa07T	7	15.24	17.78
MCa003-Pa08T	8	17.78	20.32
MCa003-Pa09T	9	20.32	22.86
MCa003-Pa10T	10	22.86	25.40
MCa003-Pa11T	11	25.40	27.94
MCa003-Pa12T	12	27.94	30.48
MCa003-Pa13T	13	30.48	33.02
MCa003-Pa14T	14	33.02	35.56
MCa003-Pa15T	15	35.56	38.10
MCa003-Pa16T	16	38.10	40.64
MCa003-Pa17T	17	40.64	43.18
MCa003-Pa18T	18	43.18	45.72
MCa003-Pa19T	19	45.72	48.26
MCa003-Pa20T	20	48.26	50.80



NOTE : SOME SIZES, STYLES AND OPTION ARE NON-STANDARD, NON-CANCELLABLE, NON-RETURNABLE

2.54 mm WAFER - MCa 006 STRAIGHT TYPE - P

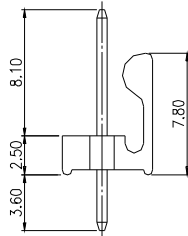
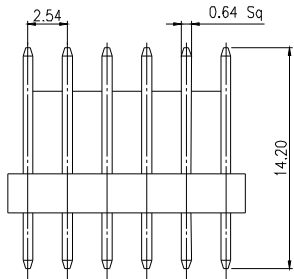
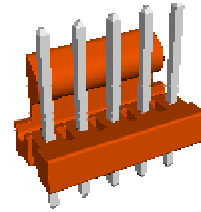


SPECIFICATIONS

VOLTAGE RATING: 250V AC/DC
 CURRENT RATING: 2A AC/DC
 WITHSTAND VOLTAGE: 1000V AC/MINUTE
 INSULATOR RESISTANCE: 1000M OHM MIN.
 TEMPERATURE RANGE: -25°C ~ +85°C

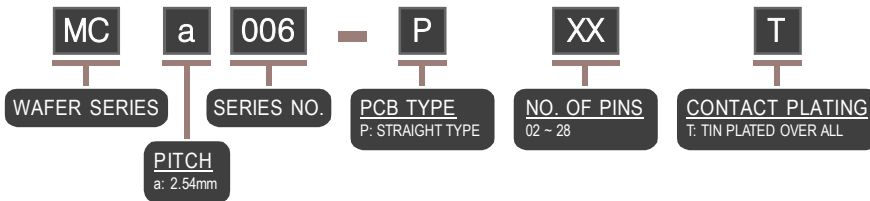
MATERIALS

CONTACT: BRASS, TIN PLATED
 BASE: NYLON 66 UL 94V-0

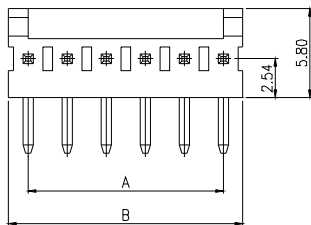


MATING CONNECTOR	
PRODUCT	PART NO.
HOUSING	MCa006 SERIES
TERMINAL	MCa006-T

PART NO.	POLES	DIMENSION	
		A	B
MCa006-P02T	2	2.54	5.08
MCa006-P03T	3	5.08	7.62
MCa006-P04T	4	7.60	10.16
MCa006-P05T	5	10.16	12.70
MCa006-P06T	6	12.70	15.24
MCa006-P07T	7	15.24	17.78
MCa006-P08T	8	17.78	20.32
MCa006-P09T	9	20.32	22.86
MCa006-P10T	10	22.86	25.40
MCa006-P11T	11	25.40	27.94
MCa006-P12T	12	27.94	30.48
MCa006-P13T	13	30.48	33.02
MCa006-P14T	14	33.02	35.56
MCa006-P15T	15	35.56	38.10
MCa006-P16T	16	38.10	40.64
MCa006-P17T	17	40.64	43.18
MCa006-P18T	18	43.18	45.72
MCa006-P19T	19	45.72	48.26
MCa006-P20T	20	48.26	50.80
MCa006-P21T	21	50.80	53.34
MCa006-P22T	22	53.34	55.88
MCa006-P23T	23	55.88	58.42
MCa006-P24T	24	58.42	60.96
MCa006-P25T	25	60.96	63.50
MCa006-P26T	26	63.50	66.04
MCa006-P27T	27	66.04	68.58
MCa006-P28T	28	68.58	71.32



2.54 mm WAFER - MCa 006 RIGHT ANGLE TYPE - Pa

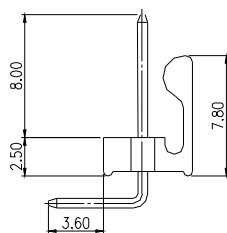
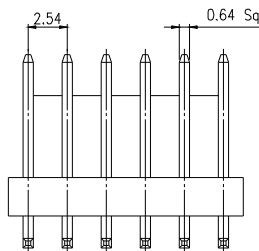
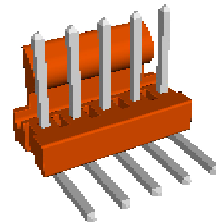


SPECIFICATIONS

VOLTAGE RATING: 250V AC/DC
 CURRENT RATING: 2A AC/DC
 WITHSTAND VOLTAGE: 1000V AC/MINUTE
 INSULATOR RESISTANCE: 1000M OHM MIN.
 TEMPERATURE RANGE: -25°C ~ +85°C

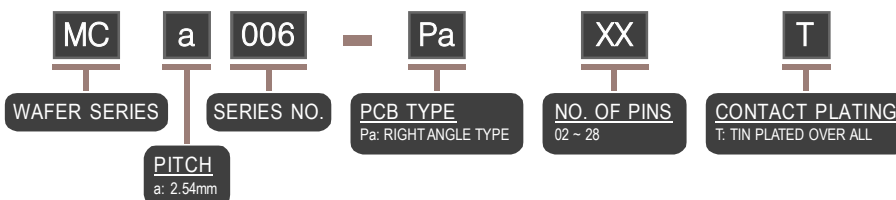
MATERIALS

CONTACT: BRASS, TIN PLATED
 BASE: NYLON 66 UL 94V-0



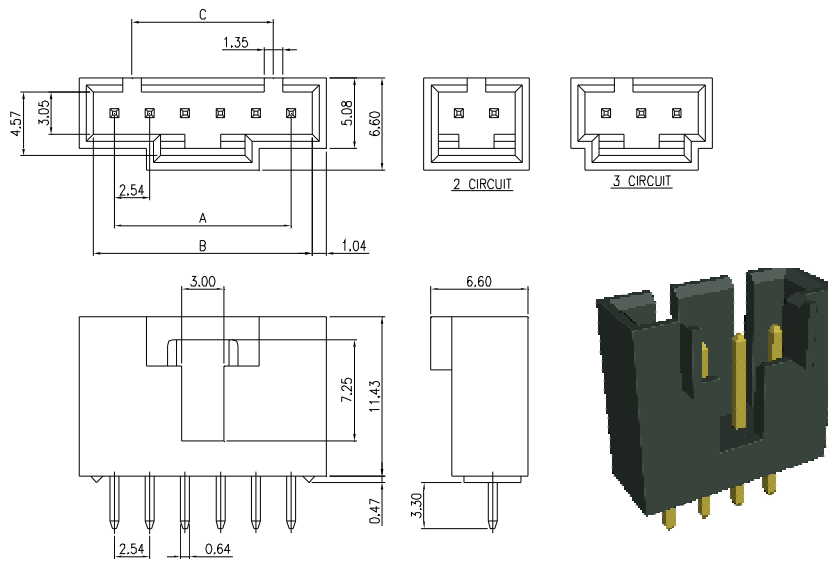
MATING CONNECTOR	
PRODUCT	PART NO.
HOUSING	MCa006 SERIES
TERMINAL	MCa006-T

PART NO.	POLES	DIMENSION	
		A	B
MCa006-Pa02T	2	2.54	5.08
MCa006-Pa03T	3	5.08	7.62
MCa006-Pa04T	4	7.60	10.16
MCa006-Pa05T	5	10.16	12.70
MCa006-Pa06T	6	12.70	15.24
MCa006-Pa07T	7	15.24	17.78
MCa006-Pa08T	8	17.78	20.32
MCa006-Pa09T	9	20.32	22.86
MCa006-Pa10T	10	22.86	25.40
MCa006-Pa11T	11	25.40	27.94
MCa006-Pa12T	12	27.94	30.48
MCa006-Pa13T	13	30.48	33.02
MCa006-Pa14T	14	33.02	35.56
MCa006-Pa15T	15	35.56	38.10
MCa006-Pa16T	16	38.10	40.64
MCa006-Pa17T	17	40.64	43.18
MCa006-Pa18T	18	43.18	45.72
MCa006-Pa19T	19	45.72	48.26
MCa006-Pa20T	20	48.26	50.80
MCa006-Pa21T	21	50.80	53.34
MCa006-Pa22T	22	53.34	55.88
MCa006-Pa23T	23	55.88	58.42
MCa006-Pa24T	24	58.42	60.96
MCa006-Pa25T	25	60.96	63.50
MCa006-Pa26T	26	63.50	66.04
MCa006-Pa27T	27	66.04	68.58
MCa006-Pa28T	28	68.58	71.32



NOTE : SOME SIZES, STYLES AND OPTION ARE NON-STANDARD, NON-CANCELLABLE, NON-RETURNABLE

2.54 mm WAFER - MCa 007 STRAIGHT TYPE - P



SPECIFICATIONS

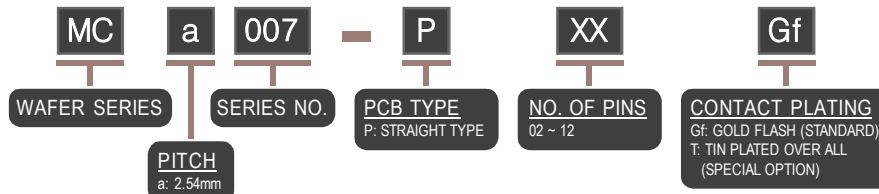
VOLTAGE RATING: 250V AC/DC
 CURRENT RATING: 3A AC/DC
 WITHSTAND VOLTAGE: 1000V AC/MINUTE
 INSULATOR RESISTANCE: 1000M OHM MIN.
 TEMPERATURE RANGE: -25°C ~ +85°C

MATERIALS

CONTACT: BRASS, TIN PLATED
 BASE: UL 94V-0 +15% GLASS FIBER

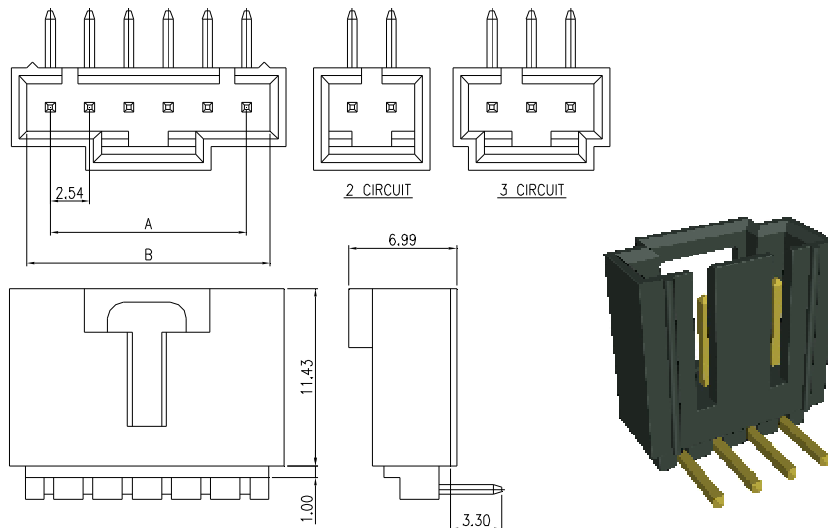
MATING CONNECTOR

PRODUCT	PART NO.
HOUSING	MCa007-XX-H
TERMINAL	MCa007-T



PART NO.	POLES	DIMENSION		
		A	B	C
MCa007-P02Gf	2	2.54	5.59	---
MCa007-P03Gf	3	5.08	8.13	2.54
MCa007-P04Gf	4	7.62	10.67	5.08
MCa007-P05Gf	5	10.16	13.21	7.62
MCa007-P06Gf	6	12.70	15.75	10.16
MCa007-P07Gf	7	15.24	18.29	12.70
MCa007-P08Gf	8	17.78	20.83	15.24
MCa007-P09Gf	9	20.32	23.37	17.78
MCa007-P10Gf	10	22.86	25.91	20.32
MCa007-P11Gf	11	25.40	28.45	22.86
MCa007-P12Gf	12	27.94	30.99	24.40

2.54 mm WAFER - MCa 007 RIGHT ANGLE TYPE - Pa



SPECIFICATIONS

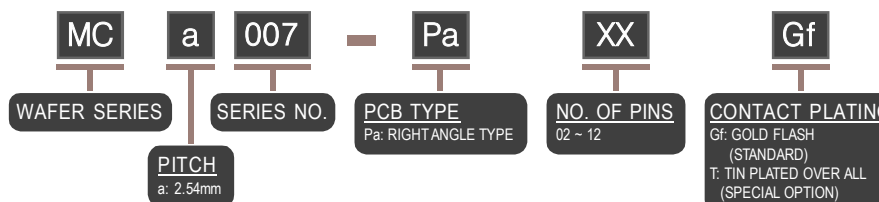
VOLTAGE RATING: 250V AC/DC
 CURRENT RATING: 3A AC/DC
 WITHSTAND VOLTAGE: 1000V AC/MINUTE
 INSULATOR RESISTANCE: 1000M OHM MIN.
 TEMPERATURE RANGE: -25°C ~ +85°C

MATERIALS

CONTACT: BRASS, TIN PLATED
 BASE: UL 94V-0 +15% GLASS FIBER

MATING CONNECTOR

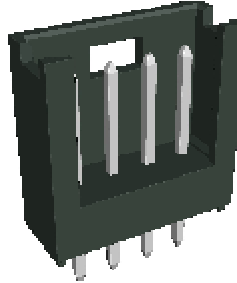
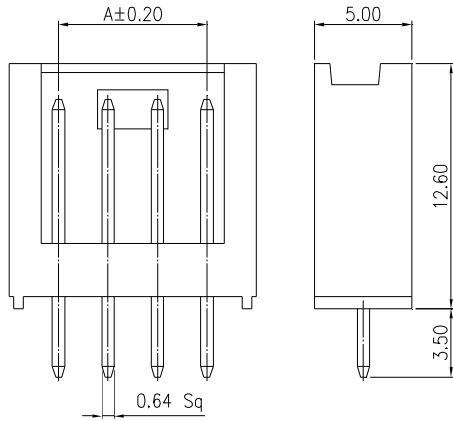
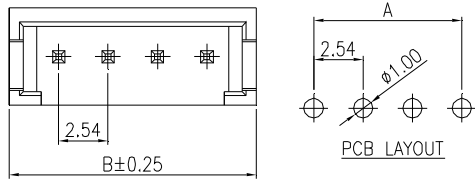
PRODUCT	PART NO.
HOUSING	MCa007-__-H
TERMINAL	MCa007-T



PART NO.	POLES	DIMENSION		
		A	B	C
MCa007-Pa02Gf	2	2.54	5.59	---
MCa007-Pa03Gf	3	5.08	8.13	2.54
MCa007-Pa04Gf	4	7.62	10.67	5.08
MCa007-Pa05Gf	5	10.16	13.21	7.62
MCa007-Pa06Gf	6	12.70	15.75	10.16
MCa007-Pa07Gf	7	15.24	18.29	12.70
MCa007-Pa08Gf	8	17.78	20.83	15.24
MCa007-Pa09Gf	9	20.32	23.37	17.78
MCa007-Pa10Gf	10	22.86	25.91	20.32
MCa007-Pa11Gf	11	25.40	28.45	22.86
MCa007-Pa12Gf	12	27.94	30.99	24.40

NOTE : SOME SIZES, STYLES AND OPTION ARE NON-STANDARD, NON-CANCELLABLE, NON-RETURNABLE

2.54 mm WAFER - MCa 009 STRAIGHT TYPE - P



SPECIFICATIONS

VOLTAGE RATING: 250V AC/DC
 CURRENT RATING: 3A AC/DC
 CONTACT RESISTANCE: 20m OHM MAX.
 WITHSTAND VOLTAGE: 1000V AC/MINUTE
 INSULATOR RESISTANCE: 1000M OHM MIN.
 TEMPERATURE RANGE: -25°C ~ +85°C.

MATERIALS

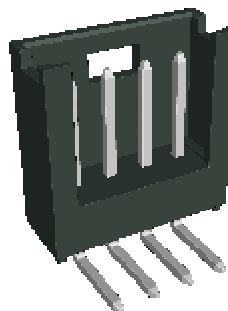
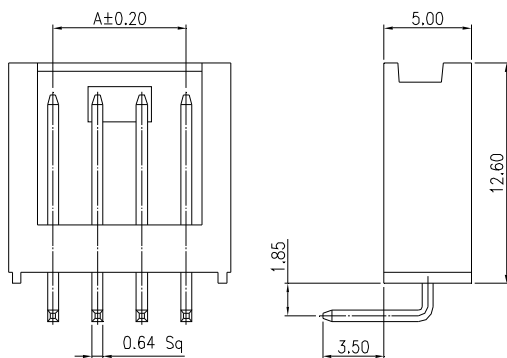
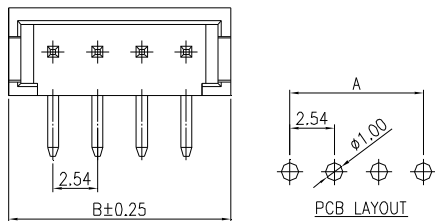
CONTACT: BRASS, TIN PLATED
 BASE: P.B.T., UL 94V-0

MATING CONNECTOR	
PRODUCT	PART NO.
HOUSING	MCa009-__HF
TERMINAL	MCa009-T

PART NO.	POLES	DIMENSION	
		A	B
MCa009-P02T	2	2.54	7.70
MCa009-P04T	4	7.62	12.70
MCa009-P06T	6	12.70	17.80
MCa009-P08T	8	17.78	22.90
MCa009-P09T	9	20.32	25.40
MCa009-P10T	10	22.86	28.00
MCa009-P12T	12	27.94	33.10
MCa009-P15T	15	35.56	40.70
MCa009-P22T	22	53.54	58.50

MC WAFFER SERIES **a** PITCH a: 2.54mm **009** SERIES NO. **P** PCB TYPE P: STRAIGHT TYPE **XX** NO. OF PINS 02, 04, 06, 08, 09, 10, 12, 15, 22 **T** CONTACT PLATING T: P.B.T., TIN PLATED (STANDARD) T-N: NYLON 6T, TIN PLATED (OPTION)

2.54 mm WAFER - MCa 009 RIGHT ANGLE TYPE - Pa



SPECIFICATIONS

VOLTAGE RATING: 250V AC/DC
 CURRENT RATING: 3A AC/DC
 CONTACT RESISTANCE: 20m OHM MAX.
 DIELECTRIC WITHSTANDING: 1000V AC/MINUTE
 INSULATOR RESISTANCE: 1000M OHM MIN.
 TEMPERATURE RANGE: -25°C ~ +85°C

MATERIALS

CONTACT: BRASS, TIN PLATED
 BASE: P.B.T., UL 94V-0

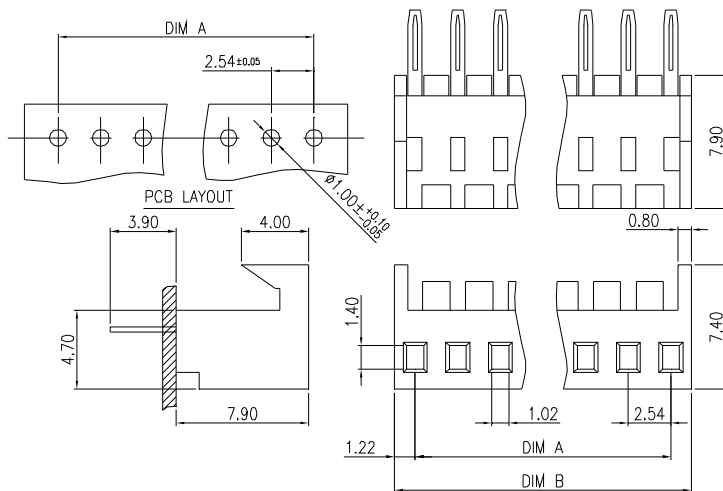
MATING CONNECTOR	
PRODUCT	PART NO.
HOUSING	MCa009-__HF
TERMINAL	MCa009-TF

PART NO.	POLES	DIMENSION	
		A	B
MCa009-Pa02T	2	2.54	7.70
MCa009-Pa04T	4	7.62	12.70
MCa009-Pa06T	6	12.70	17.80
MCa009-Pa08T	8	17.78	22.90
MCa009-Pa09T	9	20.32	25.40
MCa009-Pa10T	10	22.86	28.00
MCa009-Pa12T	12	27.94	33.10
MCa009-Pa15T	15	35.56	40.70
MCa009-Pa22T	22	53.54	58.50

MC WAFFER SERIES **a** PITCH a: 2.54mm **009** SERIES NO. **Pa** PCB TYPE P: RIGHT ANGLE TYPE **XX** NO. OF PINS 02, 04, 06, 08, 09, 10, 12, 15, 22 **T** CONTACT PLATING T: P.B.T., TIN PLATED (STANDARD) T-N: NYLON 6T, TIN PLATED (OPTION)

NOTE : SOME SIZES, STYLES AND OPTION ARE NON-STANDARD, NON-CANCELLABLE, NON-RETURNABLE

2.54 mm WAFER - MCo 010 STRAIGHT TYPE - P (TOP ENTRY)



MATING CONNECTOR	
PRODUCT	PIN TYPE
TERMINAL	0.64 SQUARE PINS

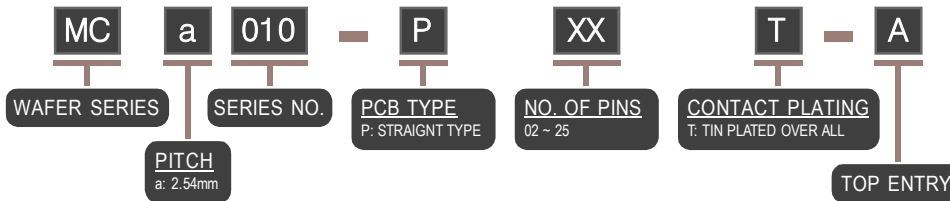
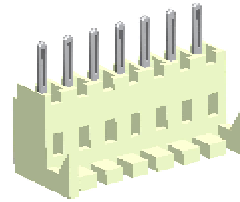
SPECIFICATIONS

VOLTAGE RATING: 250V AC/DC
 CURRENT RATING: 3A AC/DC
 WITHSTAND VOLTAGE: 1500V AC/MINUTE
 INSULATOR RESISTANCE: 500M OHM MIN.
 TEMPERATURE RANGE: -40°C ~ +105°C
 CONTACT RESISTANCE: INITIAL VALUE: 10m OHM MAX.
 AFTER ENVIRONMENT TESTING: 20m OHM MAX.
 APPLICABLE BOARD THICKNESS: 1.60mm

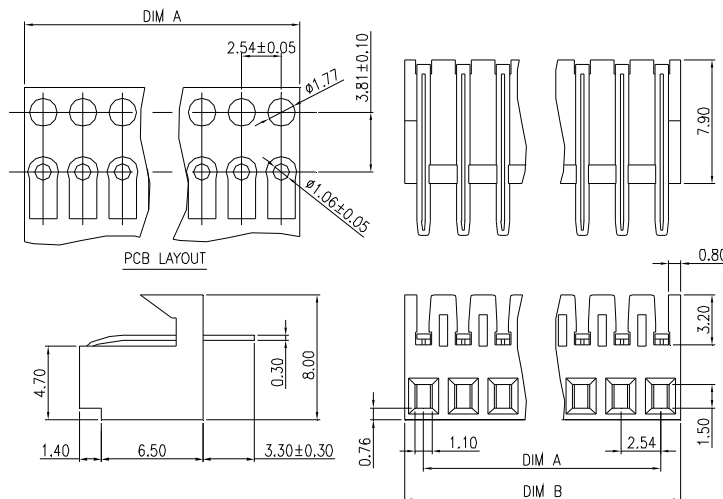
MATERIALS

BASE: UL 94V-0 NYLON 66

PART NO.	DIMENSION	
	A	B
MCo010-P02T-A	2.54	5.08
MCo010-P03T-A	5.08	7.62
MCo010-P04T-A	7.60	10.16
MCo010-P05T-A	10.16	12.70
MCo010-P06T-A	12.70	15.24
MCo010-P07T-A	15.24	17.78
MCo010-P08T-A	17.78	20.32
MCo010-P09T-A	20.32	22.86
MCo010-P10T-A	22.86	25.40
MCo010-P11T-A	25.40	27.94
MCo010-P12T-A	27.94	30.48
MCo010-P13T-A	30.48	33.02
MCo010-P14T-A	33.02	35.56
MCo010-P15T-A	35.56	38.10
MCo010-P16T-A	38.10	40.64
MCo010-P17T-A	40.64	43.18
MCo010-P18T-A	43.18	45.72
MCo010-P19T-A	45.72	48.26
MCo010-P20T-A	48.26	50.80
MCo010-P21T-A	50.80	53.54
MCo010-P22T-A	53.54	55.88
MCo010-P23T-A	55.88	58.42
MCo010-P24T-A	58.42	60.96
MCo010-P25T-A	60.96	63.50



2.54 mm WAFER - MCo 010 STRAIGHT TYPE - P (BOTTOM ENTRY)



MATING CONNECTOR	
PRODUCT	PIN TYPE
TERMINAL	0.64 SQUARE PINS

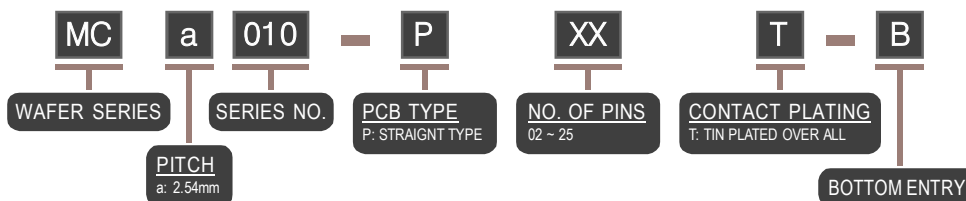
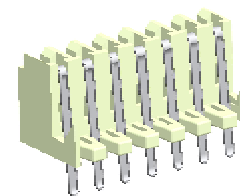
SPECIFICATIONS

VOLTAGE RATING: 250V AC/DC
 CURRENT RATING: 3A AC/DC
 WITHSTAND VOLTAGE: 1500V AC/MINUTE
 INSULATOR RESISTANCE: 500M OHM MIN.
 TEMPERATURE RANGE: -40°C ~ +105°C
 CONTACT RESISTANCE: INITIAL VALUE: 10m OHM MAX.
 AFTER ENVIRONMENT TESTING: 20m OHM MAX.
 APPLICABLE BOARD THICKNESS: 1.60mm

MATERIALS

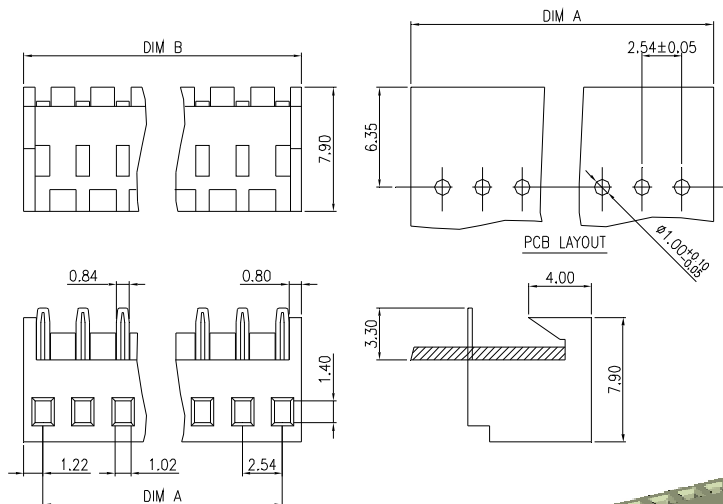
BASE: UL 94V-0 NYLON 66

PART NO.	DIMENSION	
	A	B
MCo010-P02T-B	2.54	5.08
MCo010-P03T-B	5.08	7.62
MCo010-P04T-B	7.60	10.16
MCo010-P05T-B	10.16	12.70
MCo010-P06T-B	12.70	15.24
MCo010-P07T-B	15.24	17.78
MCo010-P08T-B	17.78	20.32
MCo010-P09T-B	20.32	22.86
MCo010-P10T-B	22.86	25.40
MCo010-P11T-B	25.40	27.94
MCo010-P12T-B	27.94	30.48
MCo010-P13T-B	30.48	33.02
MCo010-P14T-B	33.02	35.56
MCo010-P15T-B	35.56	38.10
MCo010-P16T-B	38.10	40.64
MCo010-P17T-B	40.64	43.18
MCo010-P18T-B	43.18	45.72
MCo010-P19T-B	45.72	48.26
MCo010-P20T-B	48.26	50.80
MCo010-P21T-B	50.80	53.54
MCo010-P22T-B	53.54	55.88
MCo010-P23T-B	55.88	58.42
MCo010-P24T-B	58.42	60.96
MCo010-P25T-B	60.96	63.50

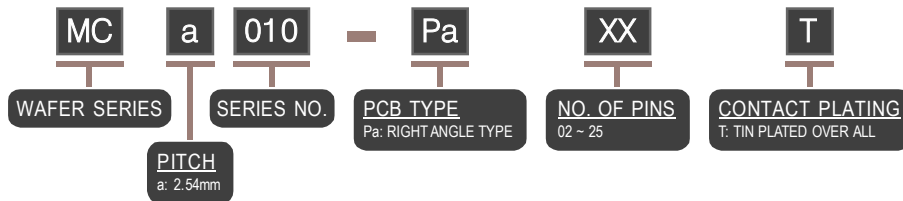


NOTE : SOME SIZES, STYLES AND OPTION ARE NON-STANDARD, NON-CANCELLABLE, NON-RETURNABLE

2.54 mm WAFER - MCa 010 RIGHT ANGLE TYPE - Pa



MATING CONNECTOR	
PRODUCT	PIN TYPE
TERMINAL	0.64 SQUARE PINS



SPECIFICATIONS

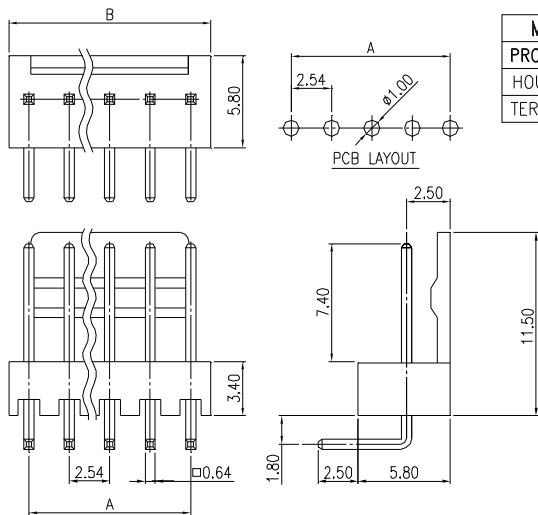
VOLTAGE RATING: 250V AC/DC
 CURRENT RATING: 3A AC/DC
 WITHSTAND VOLTAGE: 800V AC/MINUTE
 INSULATOR RESISTANCE: 500M OHM MIN.
 TEMPERATURE RANGE: -40°C ~ +105°C
 CONTACT RESISTANCE: INITIAL VALUE: 10m OHM MAX.
 AFTER ENVIRONMENTAL TESTING: 20m OHM MAX.
 APPLICABLE BOARD THICKNESS: 1.60mm

MATERIALS

BASE: NYLON 66 UL 94V-0

PART NO.	DIMENSION	
	A	B
MCa010-Pa02T	2.54	5.08
MCa010-Pa03T	5.08	7.62
MCa010-Pa04T	7.62	10.16
MCa010-Pa05T	10.16	12.70
MCa010-Pa06T	12.70	15.24
MCa010-Pa07T	15.24	17.78
MCa010-Pa08T	17.78	20.32
MCa010-Pa09T	20.32	22.86
MCa010-Pa10T	22.86	25.40
MCa010-Pa11T	25.40	27.94
MCa010-Pa12T	27.94	30.48
MCa010-Pa13T	30.48	33.02
MCa010-Pa14T	33.02	35.56
MCa010-Pa15T	35.56	38.10
MCa010-Pa16T	38.10	40.64
MCa010-Pa17T	40.64	43.18
MCa010-Pa18T	43.18	45.72
MCa010-Pa19T	45.72	48.26
MCa010-Pa20T	48.26	50.80
MCa010-Pa21T	50.80	53.34
MCa010-Pa22T	53.34	55.88
MCa010-Pa23T	55.88	58.42
MCa010-Pa24T	58.42	60.96
MCa010-Pa25T	60.96	63.50

2.54 mm WAFER - MCa 013 RIGHT ANGLE TYPE - Pa



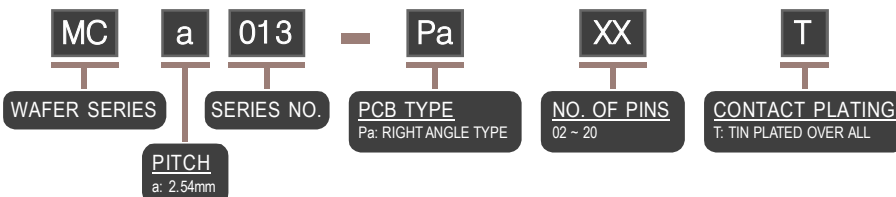
MATING CONNECTOR	
PRODUCT	PART NO.
HOUSING	MCa006-__HP
TERMINAL	MCa006-T

SPECIFICATIONS

VOLTAGE RATING: 250V AC/DC
 CURRENT RATING: 3A AC/DC
 WITHSTAND VOLTAGE: 1500V AC/MINUTE
 INSULATOR RESISTANCE: DC 5000M OHM MIN.
 TEMPERATURE RANGE: -40°C ~ +105°C
 CONTACT RESISTANCE: INITIAL VALUE 10m OHM MAX.
 AFTER ENVIRONMENT TESTING: 20m OHM MAX.
 APPLICABLE BOARD THICKNESS: 1.60mm

MATERIALS

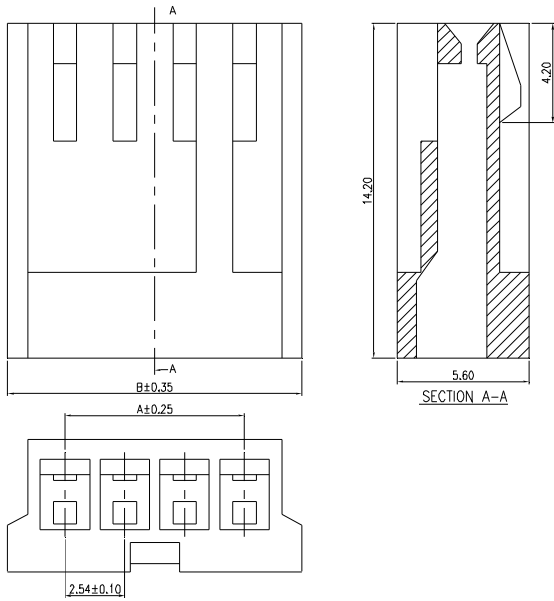
CONTACT: BRASS, TIN PLATED
 BASE: NYLON 66 UL 94V-0



PART NO.	CIRCUITS	DIMENSION	
		A	B
MCa013-Pa02T	2	2.54	5.08
MCa013-Pa03T	3	5.08	7.62
MCa013-Pa04T	4	7.62	10.16
MCa013-Pa05T	5	10.16	12.70
MCa013-Pa06T	6	12.70	15.24
MCa013-Pa07T	7	15.24	17.78
MCa013-Pa08T	8	17.78	20.32
MCa013-Pa09T	9	20.32	22.86
MCa013-Pa10T	10	22.86	25.40
MCa013-Pa11T	11	25.40	27.94
MCa013-Pa12T	12	27.94	30.48
MCa013-Pa13T	13	30.48	33.02
MCa013-Pa14T	14	33.02	35.56
MCa013-Pa15T	15	35.56	38.10
MCa013-Pa16T	16	38.10	40.64
MCa013-Pa17T	17	40.64	43.18
MCa013-Pa18T	18	43.18	45.72
MCa013-Pa19T	19	45.72	48.26
MCa013-Pa20T	20	48.26	50.80

NOTE : SOME SIZES, STYLES AND OPTION ARE NON-STANDARD, NON-CANCELLABLE, NON-RETURNABLE

2.54 mm HOUSING - MCa 002

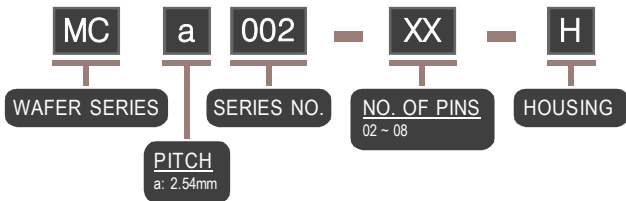
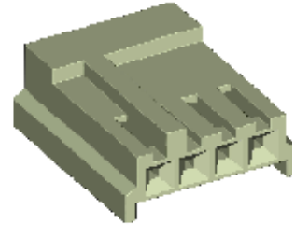


SPECIFICATIONS

VOLTAGE RATING: 250V AC/DC
 CURRENT RATING: 3A AC/DC
 WITHSTAND VOLTAGE: 1000V AC/MINUTE
 INSULATOR RESISTANCE: 1000M OHM MIN.
 TEMPERATURE RANGE: -25°C ~ +85°C
 (INCLUDING TEMPERATURE RISE IN APPLYING ELECTRIC AL CURENT)
 CONTACT RESISTANCE: INITIAL VALUE: 10m OHM MAX.
 AFTER ENVIRONMENTAL TESTING: 20m OHM MAX.

MATERIALS

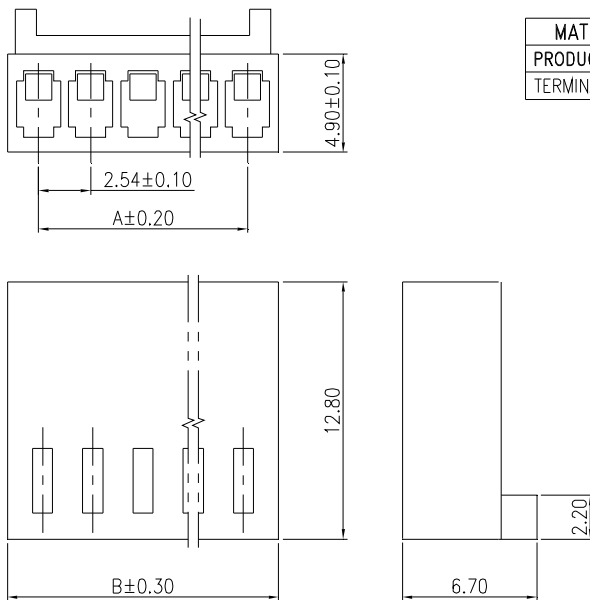
CONTACT: BRASS, TIN PLATED
 BASE: NYLON 66 UL 94V-0



MATING CONNECTOR	
PRODUCT	PART NO.
WAFER	MCa002 SERIES
TERMINAL	MCa002-T

PART NO.	CIRCUITS	DIMENSION	
		A	B
MCa002-02-H	2	2.54	7.30
MCa002-03-H	3	5.08	9.90
MCa002-04-H	4	7.62	12.50
MCa002-05-H	5	10.16	14.00
MCa002-06-H	6	12.70	17.40
MCa002-07-H	7	15.24	20.10
MCa002-08-H	8	17.78	22.20

2.54 mm HOUSING - MCa 005



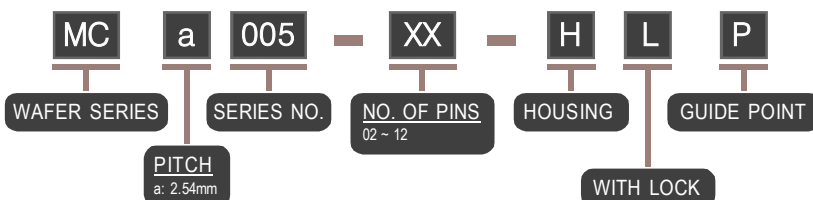
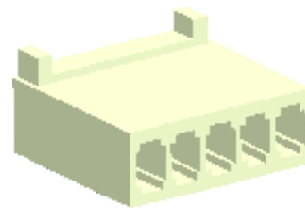
MATING CONNECTOR	
PRODUCT	PART NO.
TERMINAL	MCa002-T

SPECIFICATIONS

VOLTAGE RATING: 250V AC/DC
 CURRENT RATING: 3A AC/DC
 WITHSTAND VOLTAGE: 1000V AC/MINUTE
 INSULATOR RESISTANCE: 1000M OHM MIN.
 TEMPERATURE RANGE: -25°C ~ +85°C
 CONTACT RESISTANCE: 20m OHM MAX.

MATERIAL

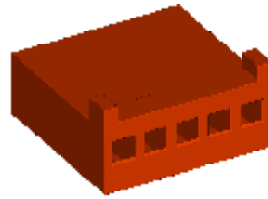
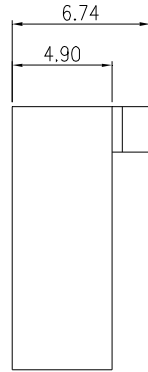
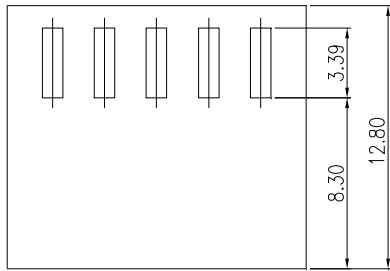
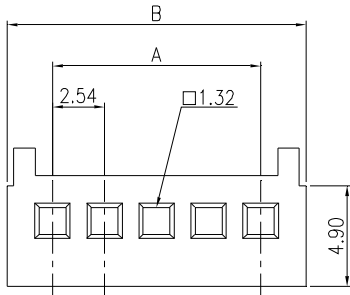
NYLON UL 94V-2



PART NO.	CIRCUITS	DIMENSION	
		A	B
MCa005-02-HLP	2	2.54	5.65
MCa005-03-HLP	3	5.08	8.19
MCa005-04-HLP	4	7.62	10.73
MCa005-05-HLP	5	10.16	13.27
MCa005-06-HLP	6	12.70	15.81
MCa005-07-HLP	7	15.24	18.35
MCa005-08-HLP	8	17.78	20.89
MCa005-09-HLP	9	20.32	23.43
MCa005-10-HLP	10	22.86	25.97
MCa005-11-HLP	11	25.40	28.51
MCa005-12-HLP	12	27.94	31.05

NOTE : SOME SIZES, STYLES AND OPTION ARE NON-STANDARD, NON-CANCELLABLE, NON-RETURNABLE

2.54 mm HOUSING - MCa 006 (WITH LOCK & GUIDE POINT)



MATING CONNECTOR	
PRODUCT	PART NO.
WAFER	MCa001 SERIES
	MCa006 SERIES
TERMINAL	MCa006-T

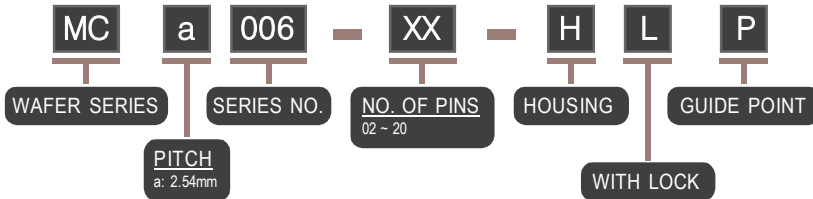
SPECIFICATIONS

VOLTAGE RATING: 250V AC/DC
CURRENT RATING: 2A AC/DC
TEMPERATURE RANGE: -25°C ~ +85°C

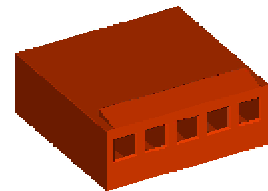
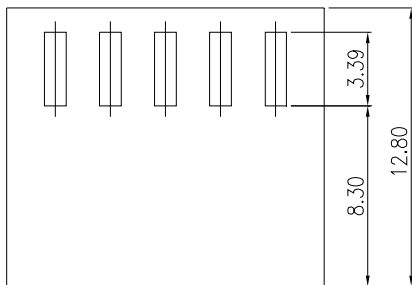
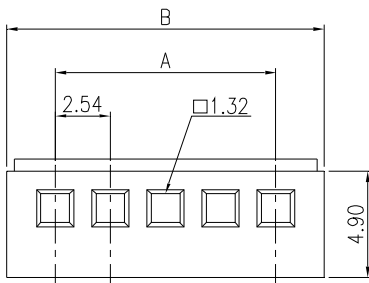
MATERIAL

NYLON UL 94V-2
STANDARD COLOR: RED

PART NO.	CIRCUITS	DIMENSION	
		A	B
MCa006-02-HLP	2	2.54	5.74
MCa006-03-HLP	3	5.08	8.28
MCa006-04-HLP	4	7.60	10.82
MCa006-05-HLP	5	10.16	13.36
MCa006-06-HLP	6	12.70	15.90
MCa006-07-HLP	7	15.24	18.44
MCa006-08-HLP	8	17.78	20.98
MCa006-09-HLP	9	20.32	23.52
MCa006-10-HLP	10	22.86	26.06
MCa006-11-HLP	11	25.40	28.60
MCa006-12-HLP	12	27.94	31.14
MCa006-13-HLP	13	30.48	33.68
MCa006-14-HLP	14	33.02	36.22
MCa006-15-HLP	15	35.56	38.76
MCa006-16-HLP	16	38.10	41.30
MCa006-17-HLP	17	40.64	43.84
MCa006-18-HLP	18	43.18	46.38
MCa006-19-HLP	19	45.72	48.92
MCa006-20-HLP	20	48.26	51.46



2.54 mm HOUSING - MCa 006 (WITH LOCK)



MATING CONNECTOR	
PRODUCT	PART NO.
WAFER	MCa001 SERIES
	MCa006 SERIES
TERMINAL	MCa006-T

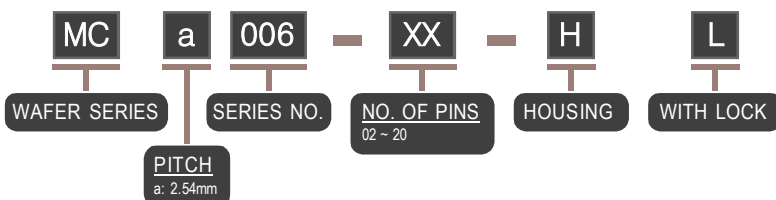
SPECIFICATIONS

VOLTAGE RATING: 250V AC/DC
CURRENT RATING: 2A AC/DC
TEMPERATURE RANGE: -25°C ~ +85°C

MATERIAL

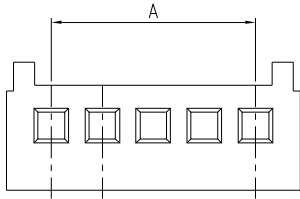
NYLON UL 94V-2
STANDARD COLOR: RED

PART NO.	CIRCUITS	DIMENSION	
		A	B
MCa006-02-HL	2	2.54	5.74
MCa006-03-HL	3	5.08	8.28
MCa006-04-HL	4	7.60	10.82
MCa006-05-HL	5	10.16	13.36
MCa006-06-HL	6	12.70	15.90
MCa006-07-HL	7	15.24	18.44
MCa006-08-HL	8	17.78	20.98
MCa006-09-HL	9	20.32	23.52
MCa006-10-HL	10	22.86	26.06
MCa006-11-HL	11	25.40	28.60
MCa006-12-HL	12	27.94	31.14
MCa006-13-HL	13	30.48	33.68
MCa006-14-HL	14	33.02	36.22
MCa006-15-HL	15	35.56	38.76
MCa006-16-HL	16	38.10	41.30
MCa006-17-HL	17	40.64	43.84
MCa006-18-HL	18	43.18	46.38
MCa006-19-HL	19	45.72	48.92
MCa006-20-HL	20	48.26	51.46



NOTE : SOME SIZES, STYLES AND OPTION ARE NON-STANDARD, NON-CANCELLABLE, NON-RETURNABLE

2.54 mm HOUSING - MCa 006 (WITH GUIDE POINT)



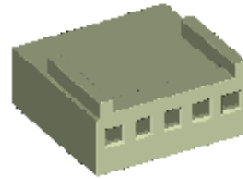
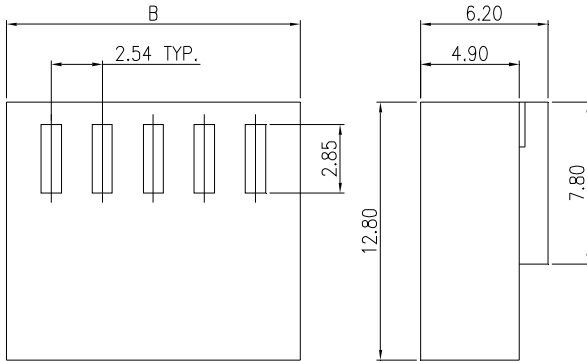
MATING CONNECTOR	
PRODUCT	PART NO.
WAFER	MCa001 SERIES
TERMINAL	MCa006-T

SPECIFICATIONS

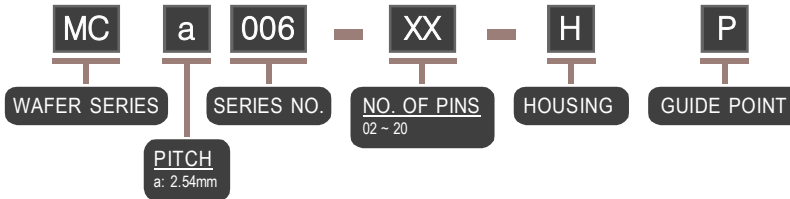
VOLTAGE RATING: 250V AC/DC
CURRENT RATING: 2A AC/DC
TEMPERATURE RANGE: -25°C ~ +85°C

MATERIAL

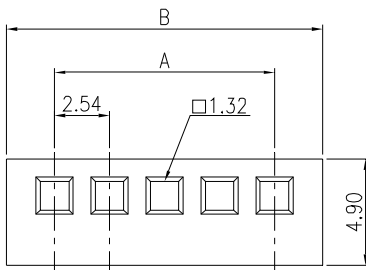
NYLON UL 94V-2
STANDARD COLOR: RED



PART NO.	CIRCUITS	DIMENSION	
		A	B
MCa006-02-HP	2	2.54	5.74
MCa006-03-HP	3	5.08	8.28
MCa006-04-HP	4	7.60	10.82
MCa006-05-HP	5	10.16	13.36
MCa006-06-HP	6	12.70	15.90
MCa006-07-HP	7	15.24	18.44
MCa006-08-HP	8	17.78	20.98
MCa006-09-HP	9	20.32	23.52
MCa006-10-HP	10	22.86	26.06
MCa006-11-HP	11	25.40	28.60
MCa006-12-HP	12	27.94	31.14
MCa006-13-HP	13	30.48	33.68
MCa006-14-HP	14	33.02	36.22
MCa006-15-HP	15	35.56	38.76
MCa006-16-HP	16	38.10	41.30
MCa006-17-HP	17	40.64	43.84
MCa006-18-HP	18	43.18	46.38
MCa006-19-HP	19	45.72	48.92
MCa006-20-HP	20	48.26	51.46



2.54 mm HOUSING - MCa 006



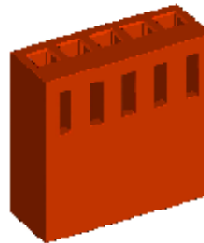
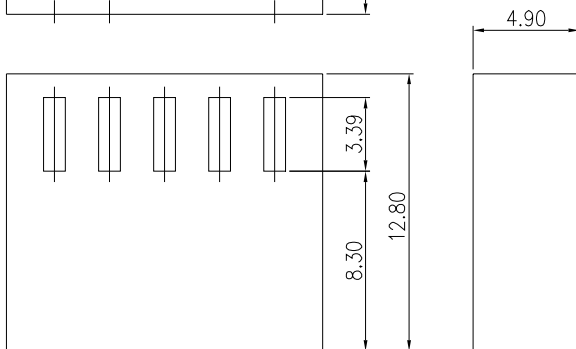
MATING CONNECTOR	
PRODUCT	PART NO.
WAFER	MCa001 SERIES
TERMINAL	MCa006-T

SPECIFICATIONS

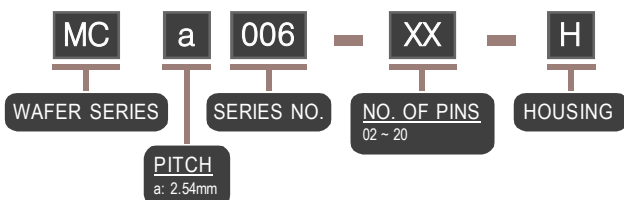
VOLTAGE RATING: 250V AC/DC
CURRENT RATING: 2A AC/DC
TEMPERATURE RANGE: -25°C ~ +85°C

MATERIAL

NYLON UL 94V-2
STANDARD COLOR: RED

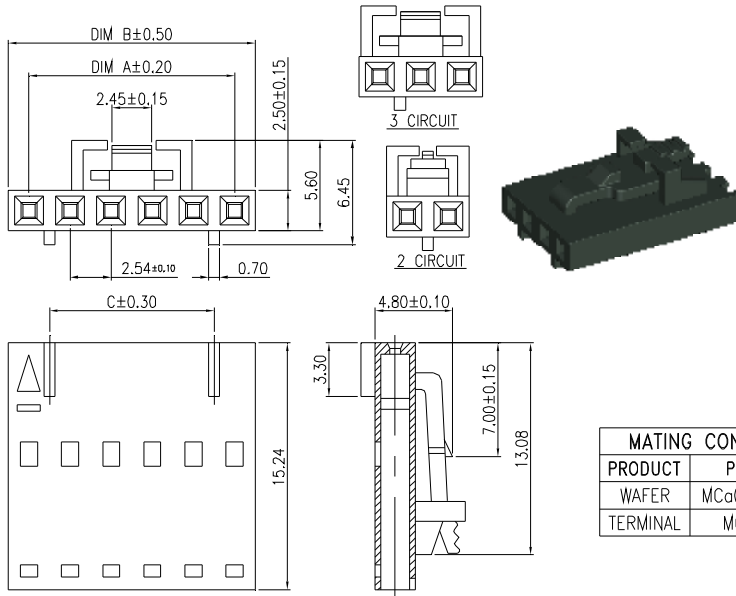


PART NO.	CIRCUITS	DIMENSION	
		A	B
MCa006-02-H	2	2.54	5.74
MCa006-03-H	3	5.08	8.28
MCa006-04-H	4	7.62	10.82
MCa006-05-H	5	10.16	13.36
MCa006-06-H	6	12.70	15.90
MCa006-07-H	7	15.24	18.44
MCa006-08-H	8	17.78	20.98
MCa006-09-H	9	20.32	23.52
MCa006-10-H	10	22.86	26.06
MCa006-11-H	11	25.40	28.60
MCa006-12-H	12	27.94	31.14
MCa006-13-H	13	30.48	33.68
MCa006-14-H	14	33.02	36.22
MCa006-15-H	15	35.56	38.76
MCa006-16-H	16	38.10	41.30
MCa006-17-H	17	40.64	43.84
MCa006-18-H	18	43.18	46.38
MCa006-19-H	19	45.72	48.92
MCa006-20-H	20	48.26	51.46



NOTE : SOME SIZES, STYLES AND OPTION ARE NON-STANDARD, NON-CANCELLABLE, NON-RETURNABLE

2.54 mm HOUSING - MCa 007



SPECIFICATIONS

VOLTAGE RATING: 250V AC/DC
 CURRENT RATING: 3A AC/DC
 WITHSTAND VOLTAGE: 1000V AC/MINUTE
 INSULATOR RESISTANCE: 1000M OHM MIN.
 TEMPERATURE RANGE: -25°C ~ +85°C
 CONTACT RESISTANCE: INITIAL VALUE 10m OHM MAX.
 AFTER ENVIRONMENT TESTING: 20m OHM MAX.
 APPLICABLE BOARD THICKNESS: 1.60mm

MATERIALS

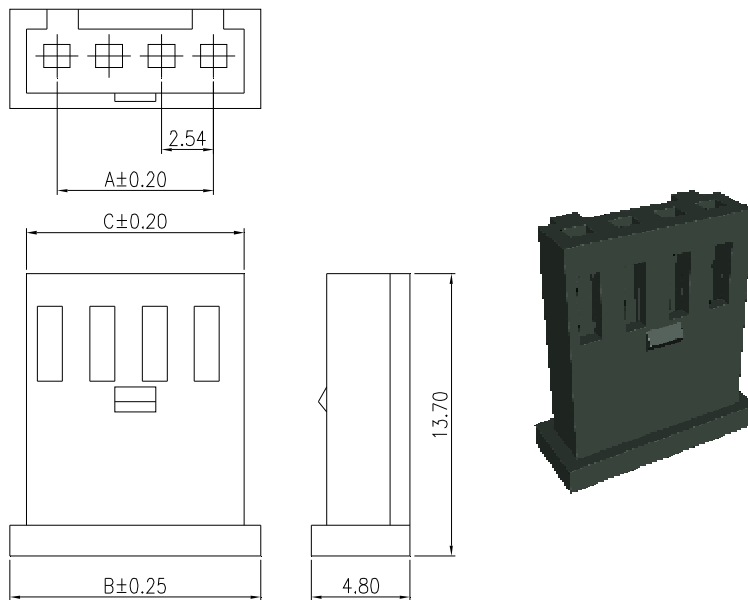
BASE: P.B.T., UL 94V-0 +15% GLASS FIBER

MATING CONNECTOR	
PRODUCT	PART NO.
WAFER	MCa007 SERIES
TERMINAL	MCa007-T

PART NO.	CIRCUITS	DIMENSION		
		A	B	C
MCa007-02-H	2	2.54	5.08	--
MCa007-03-H	3	5.08	7.62	2.54
MCa007-04-H	4	7.62	10.16	5.08
MCa007-05-H	5	10.16	12.70	7.60
MCa007-06-H	6	12.70	15.24	10.16
MCa007-07-H	7	15.24	17.78	12.70
MCa007-08-H	8	17.78	20.32	15.24
MCa007-09-H	9	20.32	22.86	17.78
MCa007-10-H	10	22.86	25.40	20.32
MCa007-11-H	11	25.40	27.94	22.86
MCa007-12-H	12	27.94	30.48	25.40
MCa007-13-H	13	30.48	33.02	27.94
MCa007-14-H	14	33.02	35.56	30.48
MCa007-15-H	15	35.56	38.10	33.02
MCa007-16-H	16	38.10	40.64	35.56
MCa007-17-H	17	40.64	43.18	38.10
MCa007-18-H	18	43.18	45.72	40.64



2.54 mm HOUSING - MCa 009



SPECIFICATIONS

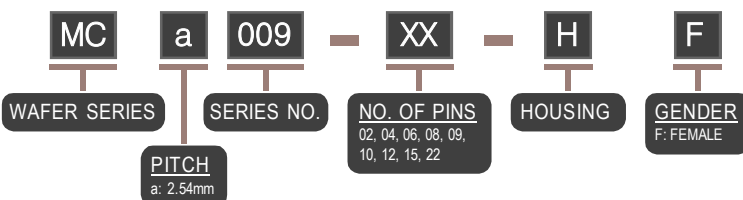
VOLTAGE RATING: 250V AC/DC
 CURRENT RATING: 3A AC/DC
 WITHSTAND VOLTAGE: 1000V AC/MINUTE
 INSULATOR RESISTANCE: 1000M OHM MIN.
 TEMPERATURE RANGE: -25°C ~ +85°C
 CONTACT RESISTANCE: 20m OHM MAX.

MATERIALS

BASE: NYLON 66 UL 94V-0

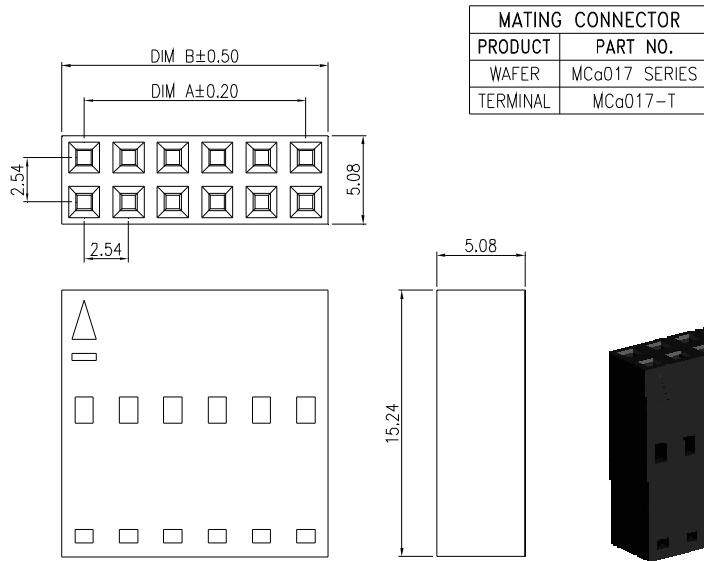
MATING CONNECTOR	
PRODUCT	PART NO.
WAFER	MCa009 SERIES
TERMINAL	MCa009-TF

PART NO.	CIRCUITS	DIMENSION		
		A	B	C
MCa009-02-HF	2	2.54	7.10	5.60
MCa009-04-HF	4	7.62	12.20	10.60
MCa009-06-HF	6	12.70	17.30	15.70
MCa009-08-HF	8	17.78	22.30	20.80
MCa009-09-HF	9	20.32	24.90	23.30
MCa009-10-HF	10	22.86	27.40	25.90
MCa009-12-HF	12	27.94	32.50	31.00
MCa009-15-HF	15	35.56	40.10	38.60
MCa009-22-HF	22	53.34	57.90	56.40



NOTE : SOME SIZES, STYLES AND OPTION ARE NON-STANDARD, NON-CANCELLABLE, NON-RETURNABLE

2.54 X 2.54mm HOUSING - MCa 017



MATING CONNECTOR	
PRODUCT	PART NO.
WAFER	MCa017 SERIES
TERMINAL	MCa017-T

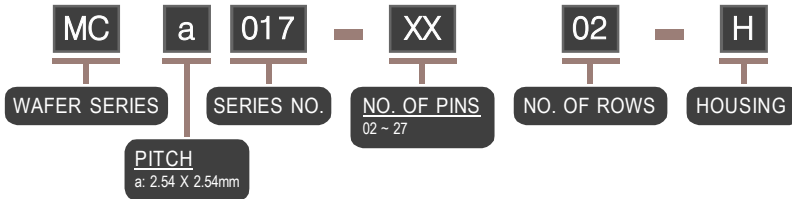
SPECIFICATIONS

VOLTAGE RATING: 250V AC/DC
 CURRENT RATING: 3A AC/DC
 WITHSTAND VOLTAGE: 1000V AC/MINUTE
 INSULATOR RESISTANCE: 1000M OHM MIN.
 TEMPERATURE RANGE: -25°C ~ +85°C
 CONTACT RESISTANCE: INITIAL VALUE 10m OHM MAX.
 AFTER ENVIRONMENT TESTING: 20m OHM MAX.
 APPLICABLE BOARD THICKNESS: 1.60mm

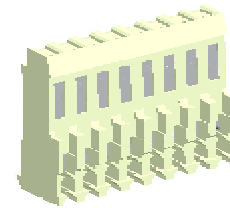
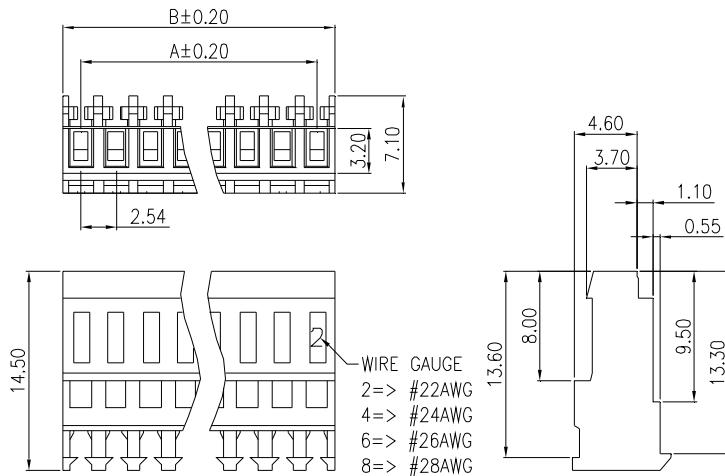
MATERIALS

BASE: P.B.T., UL 94V-0 +15% GLASS FIBER

PART NO.	CIRCUITS	DIMENSION	
		A	B
MCa017-0202-H	2	2.54	5.08
MCa017-0302-H	3	5.08	7.62
MCa017-0402-H	4	7.62	10.16
MCa017-0502-H	5	10.16	12.70
MCa017-0602-H	6	12.70	15.24
MCa017-0702-H	7	15.24	17.78
MCa017-0802-H	8	17.78	20.32
MCa017-0902-H	9	20.32	22.86
MCa017-1002-H	10	22.86	25.40
MCa017-1102-H	11	25.40	27.94
MCa017-1202-H	12	27.94	30.48
MCa017-1302-H	13	30.48	33.02
MCa017-1402-H	14	33.02	35.56
MCa017-1502-H	15	35.56	38.10
MCa017-1602-H	16	38.10	40.64
MCa017-1702-H	17	40.64	43.18
MCa017-1802-H	18	43.18	45.72
MCa017-1902-H	19	45.72	48.26
MCa017-2002-H	20	48.26	50.80
MCa017-2102-H	21	50.80	53.54
MCa017-2202-H	22	53.54	55.88
MCa017-2302-H	23	55.88	58.42
MCa017-2402-H	24	58.42	60.96
MCa017-2502-H	25	60.96	63.50
MCa017-2602-H	26	63.50	66.04
MCa017-2702-H	27	66.04	68.58



2.54 mm HOUSING - MCa 020



PART NO.	CIRCUITS	DIMENSION	
		A	B
MCa020-02-HF---	2	2.54	5.08
MCa020-03-HF---	3	5.08	7.62
MCa020-04-HF---	4	7.62	10.16
MCa020-05-HF---	5	10.16	12.70
MCa020-06-HF---	6	12.70	15.24
MCa020-07-HF---	7	15.24	17.78
MCa020-08-HF---	8	17.78	20.32
MCa020-09-HF---	9	20.32	22.86
MCa020-10-HF---	10	22.86	25.40
MCa020-11-HF---	11	25.40	27.94
MCa020-12-HF---	12	27.94	30.48
MCa020-13-HF---	13	30.48	33.02
MCa020-14-HF---	14	33.02	35.56
MCa020-15-HF---	15	35.56	38.10
MCa020-16-HF---	16	38.10	40.64
MCa020-17-HF---	17	40.64	43.18
MCa020-18-HF---	18	43.18	45.72
MCa020-19-HF---	19	45.72	48.26
MCa020-20-HF---	20	48.26	50.80
MCa020-21-HF---	21	50.80	53.54
MCa020-22-HF---	22	53.54	55.88
MCa020-23-HF---	23	55.88	58.42
MCa020-24-HF---	24	58.42	60.96
MCa020-25-HF---	25	60.96	63.50
MCa020-26-HF---	26	63.50	66.04
MCa020-27-HF---	27	66.04	68.58
MCa020-28-HF---	28	68.58	71.12

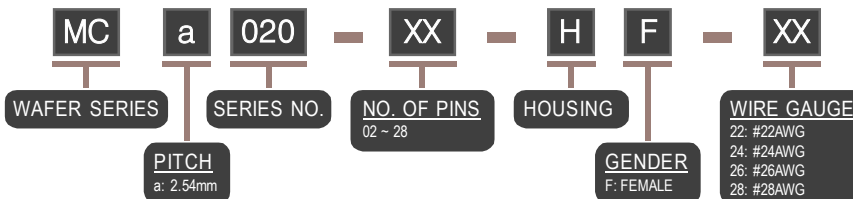
SPECIFICATIONS

VOLTAGE RATING: 250V AC/DC
 CURRENT RATING: 3A AC/DC
 WITHSTAND VOLTAGE: 1500V AC/MINUTE
 INSULATOR RESISTANCE: 1000M OHM MIN.
 TEMPERATURE RANGE: -40°C ~ +105°C

CONTACT RESISTANCE: INITIAL VALUE 10m OHM MAX.
 AFTER ENVIRONMENT TESTING: 20m OHM MAX.
 APPLICABLE WIRE: #22 ~ #28

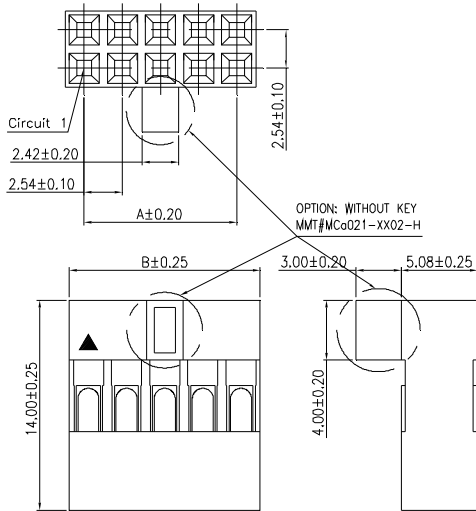
MATERIALS

BASE: P.B.T., UL 94V-0



NOTE : SOME SIZES, STYLES AND OPTION ARE NON-STANDARD, NON-CANCELLABLE, NON-RETURNABLE

2.54 X 2.54 mm HOUSING - MCa 021

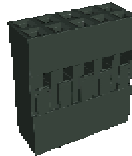


SPECIFICATIONS

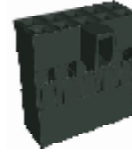
VOLTAGE RATING: 250V AC/DC
 CURRENT RATING: 3A AC/DC
 WITHSTAND VOLTAGE: 1000V AC/MINUTE
 INSULATOR RESISTANCE: 1000M OHM MIN.
 TEMPERATURE RANGE: -25°C ~ +85°C
 CONTACT RESISTANCE: 20m OHM MAX.

MATERIALS

BASE: NYLON66, UL 94V-0



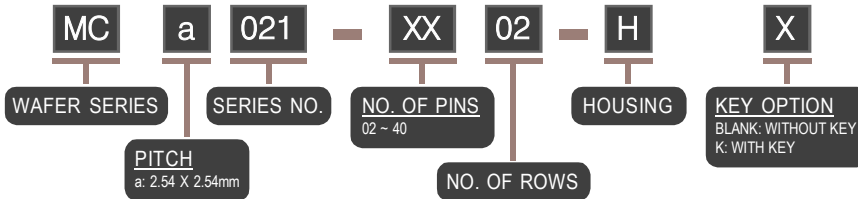
WITHOUT KEY



WITH KEY

MATING CONNECTOR	
PRODUCT	PART NO.
HEADER	PHa SERIES
BOX HEADER	RPHa SERIES
TERMINAL	MCa021-T

PART NO.	CIRCUITS	DIMENSION	
		A	B
MCa021-0202-HK	2X2	2.54	5.08
MCa021-0302-HK	2X3	5.08	7.62
MCa021-0402-HK	2X4	7.62	10.16
MCa021-0502-HK	2X5	10.16	12.70
MCa021-0602-HK	2X6	12.70	15.24
MCa021-0702-HK	2X7	15.24	17.78
MCa021-0802-HK	2X8	17.78	20.32
MCa021-0902-HK	2X9	20.32	22.86
MCa021-1002-HK	2X10	22.86	25.40
MCa021-1102-HK	2X11	25.40	27.94
MCa021-1202-HK	2X12	27.94	30.48
MCa021-1302-HK	2X13	30.48	33.02
MCa021-1402-HK	2X14	33.02	35.56
MCa021-1502-HK	2X15	35.56	38.10
MCa021-1602-HK	2X16	38.10	40.64
MCa021-1702-HK	2X17	40.64	43.18
MCa021-1802-HK	2X18	43.18	45.72
MCa021-1902-HK	2X19	45.72	48.26
MCa021-2002-HK	2X20	48.26	50.80
MCa021-2102-HK	2X21	50.80	53.34
MCa021-2202-HK	2X22	53.34	55.88
MCa021-2302-HK	2X23	55.88	58.42
MCa021-2402-HK	2X24	58.42	60.96
MCa021-2502-HK	2X25	60.96	63.50
MCa021-2602-HK	2X26	63.50	66.04
MCa021-2702-HK	2X27	66.04	68.58
MCa021-2802-HK	2X28	68.58	71.12
MCa021-2902-HK	2X29	71.12	73.66
MCa021-3002-HK	2X30	73.66	76.20
MCa021-3102-HK	2X31	76.20	78.74
MCa021-3202-HK	2X32	78.74	81.28
MCa021-3302-HK	2X33	81.28	83.82
MCa021-3402-HK	2X34	83.82	86.36
MCa021-3502-HK	2X35	86.36	88.90
MCa021-3602-HK	2X36	88.90	91.44
MCa021-3702-HK	2X37	91.44	93.98
MCa021-3802-HK	2X38	93.98	96.52
MCa021-3902-HK	2X39	96.52	99.06
MCa021-4002-HK	2X40	99.06	101.6



NOTE : SOME SIZES, STYLES AND OPTION ARE NON-STANDARD, NON-CANCELLABLE, NON-RETURNABLE