

**MMI**

---

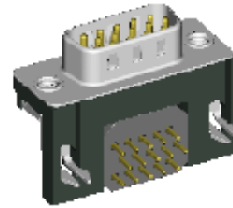
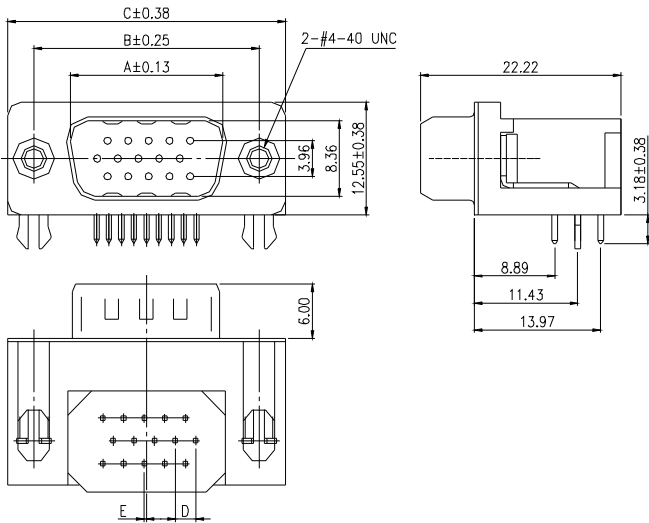
**EMI HIGH DENSITY  
D-CUB CONNECTOR**

---

---

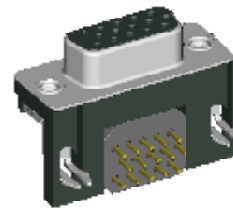
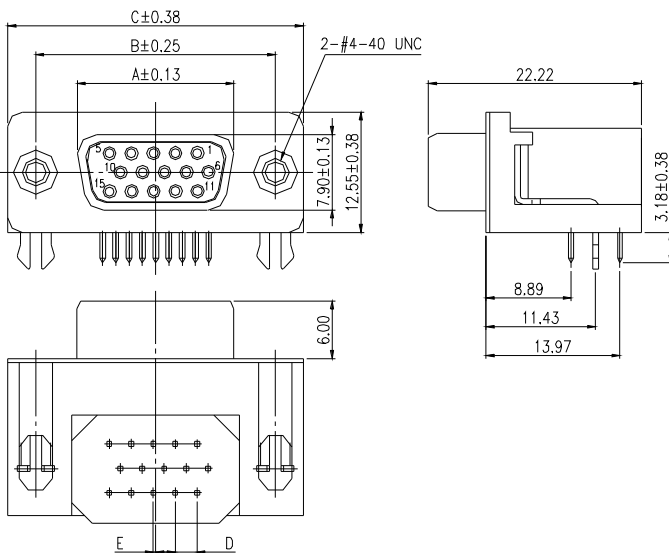
# EHDB 14X SERIES - MOUNTING TYPE 2a RIGHT ANGLE TYPE - Pa

## MALE



PART NO.	NO.OF CONTACTS (SHELL SIZE)	DIMENSION				
		A	B	C	D	E
EHDB140-PaF15GX-2a	15P	16.92	24.99	30.81	2.29	0.25
EHDB140-PaF26GX-2a	26P	25.25	33.32	39.14	2.29	0.51
EHDB140-PaF44GX-2a	44P	38.96	47.04	53.04	2.29	0.51
EHDB140-PaF62GX-2a	62P	54.84	63.50	69.32	2.41	0.58

## FEMALE



PART NO.	NO.OF CONTACTS (SHELL SIZE)	DIMENSION				
		A	B	C	D	E
EHDB14X-PaF15GX-2a	15P	16.33	24.99	30.81	2.29	0.25
EHDB14X-PaF26GX-2a	26P	24.66	33.32	39.14	2.29	0.51
EHDB14X-PaF44GX-2a	44P	38.38	47.04	53.04	2.29	0.51
EHDB14X-PaF62GX-2a	62P	54.84	63.50	69.32	2.41	0.58

<b>EHDB</b>	<b>14X</b>	<b>Pa</b>	<b>X</b>	<b>XX</b>	<b>GX</b>	<b>2</b>	<b>a</b>
<b>SERIES NO.</b> 14X: FOOT PRINT= 8.89MM -140: BLACK VGA CONNECTOR -141: PANTONE BLUE VGA CONNECTOR		<b>GENDER</b> M: MALE F: FEMALE		<b>NO. OF CONTACT</b> 15,26,44,62		<b>BOARDLOCK OPTION</b> 2: 2 PRONG BOARD LOCK	
<b>EMI HIGH DEINSITY D-SUB</b>		<b>PCB TYPE.</b> Pa: RIGHT ANGLE TYPE		<b>CONTACT PLATING OPTION</b> Gf: GOLD FLASH Gf1: GOLD FLASH ON CONTACT, TIN PLATED ON SOLDER TAIL G15t: 15u" GOLD ON CONTACT, TIN PLATED ON SOLDER TAIL G30t: 30u" GOLD ON CONTACT, TIN PLATED ON SOLDER TAIL		<b>WITH #4-40UNC THREAD INSERT GROUNDING BRACKET &amp; BOARDLOCK</b>	

**ELECTRICAL CHARACTERISTIC**  
 CONTACT CURRENT RATING: 3 AMP  
 CONTACT RESISTANCE: 25 M OHM MAX.  
 INSULATION RESISTANCE: 5000 OHM MIN. AT 500V DC  
 DIELECTRIC WITHSTANDING VOLTAGE: AC 1000V / MIN. R.M.S  
 OPERATING TEMPERATURE:-55°C~ +105°C

**MATERIALS**  
 INSULATOR: P.B.T. UL 94V-0 RATED  
 SHELL: COLD ROLLER STEEL  
 CONTACTS: BRASS

NOTE : SOME SIZES, STYLES AND OPTION ARE NON-STANDARD, NON-CANCELLABLE, NON-RETURNABLE