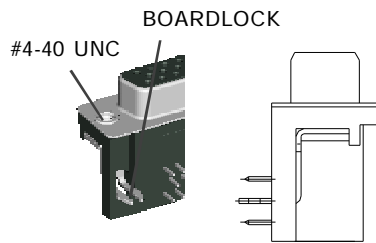
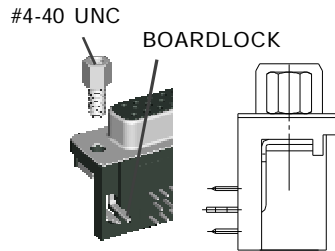


**D-SUB CONNECTOR
(SOLDER CUP TYPE)**

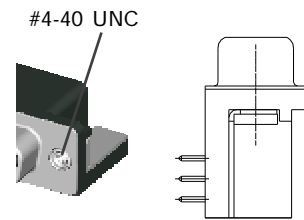
HIGH DENSITY D- SUB 1XX SERIES MOUNTING OPTIONS



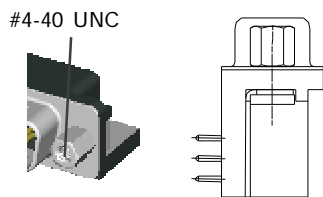
a TYPE
WITH #4-40UNC THREAD INSERT
GROUNDING BRACKET &
BOARDLOCK



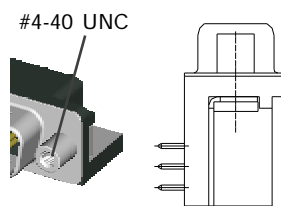
as TYPE
WITH #4-40UNC HEX NUT
GROUNDING BRACKET &
BOARDLOCK



b TYPE
WITH #4-40UNC THREAD INSERT
GROUNDING BRACKET

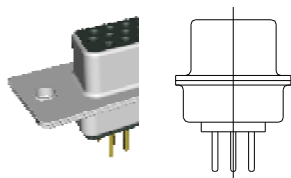


d TYPE
WITH FIXED #4-40UNC HEX NUT
GROUNDING BRACKET

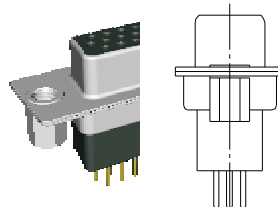


rd TYPE
WITH FIXED #4-40UNC ROUND NUT
GROUNDING BRACKET

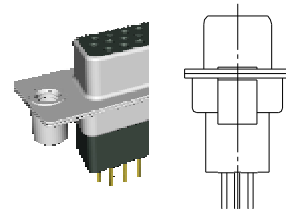
HIGH DENSITY D- SUB 2XX SERIES MOUNTING OPTIONS



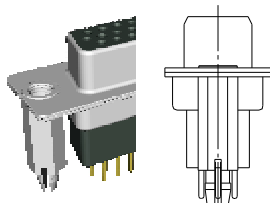
H TYPE
WITH MOUNTING HOLE ONLY



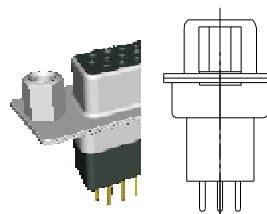
I TYPE
WITH #4-40UNC HEX NUT
IN THE REAR OF THE SHELL



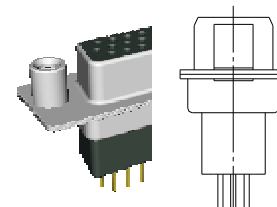
J TYPE
WITH #4-40UNC ROUND NUT
IN THE REAR OF THE SHELL



K TYPE
WITH #4-40UNC IN THE REAR SHELL
USE RIVET AS BOARDLOCK



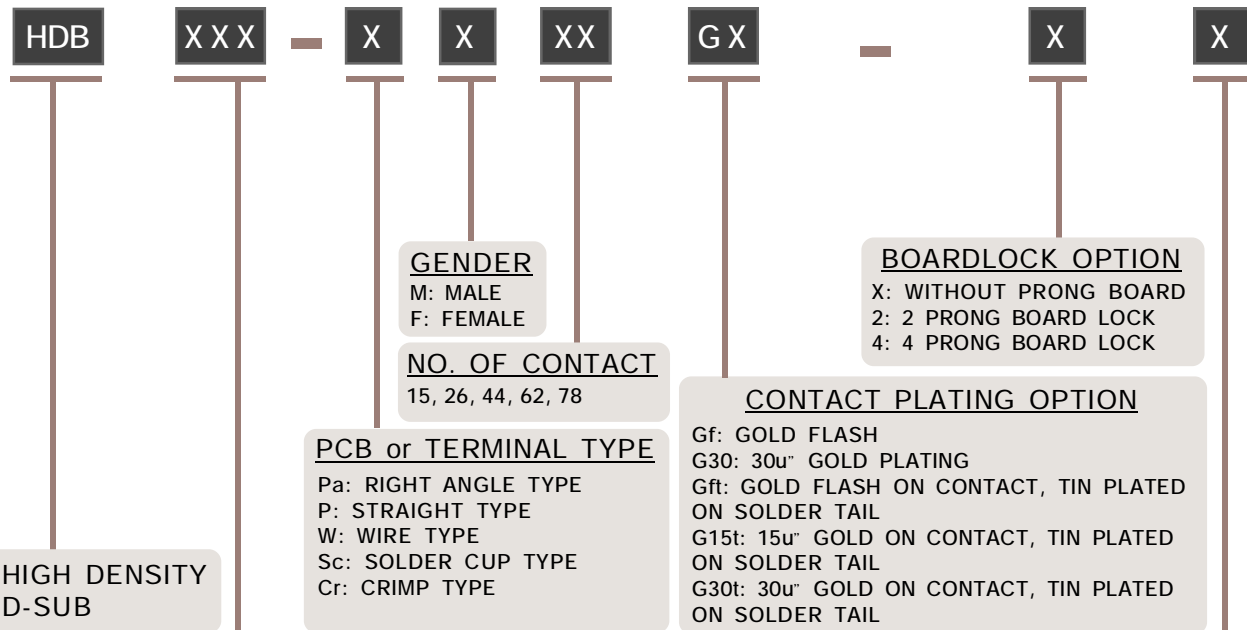
L TYPE
WITH #4-40UNC HEX NUT
IN THE FRONT OF THE SHELL



M TYPE
WITH #4-40UNC ROUND NUT
IN THE FRONT OF THE SHELL

NOTE : SOME SIZES, STYLES AND OPTION ARE NON-STANDARD, NON-CANCELLABLE, NON-RETURNABLE

HIGH DENSITY D-SUB CONNECTOR PART NO. INFORMATION



SERIES NO.

1XX: RIGHT ANGLE TYPE
-130
-132
-14X
-150

2XX: STRAIGHT TYPE
-200
-210
-230
-250

3XX: WIRE TYPE
-300: LENTH= 10.00 mm
-310: LENTH= 13.00 mm
-320: LENTH= 17.50 mm

4XX: SOLDER CUP TYPE
- 400

5XX: CRIMP TYPE
- 500

9XX: MACHINE PIN TYPE
-900: FOOTPRINT= 9.30 mm
-910: FOOTPRINT= 7.19 mm

MOUNTING TYPE

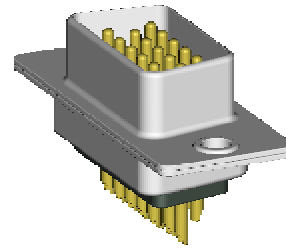
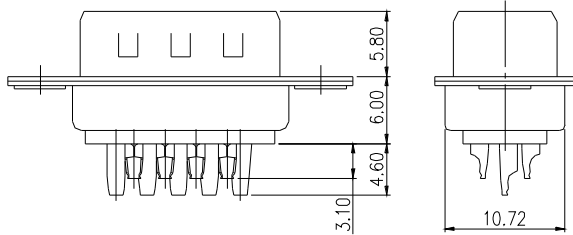
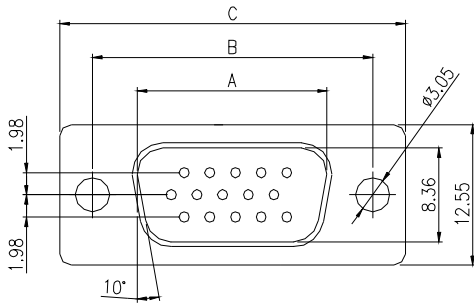
FOR RIGHT ANGLE TYPE
a :WITH #4-40UNC THREAD INSERT GROUNDING BRACKET & BOARDLOCK
b: WITH #4-40UNC THREAD INSERT GROUNDING BRACKET
d: WITH FIXED #4-40UNC HEX NUT GROUNDING BRACKET
rd: WITH FIXED #4-40UNC ROUND NUT GROUNDING BRACKET

FOR STRAIGHT TYPE
H: WITH MOUNTING HOLE ONLY
I: WITH #4-40UNC HEX NUT IN THE REAR OF THE SHELL
J: WITH #4-40UNC ROUND NUT IN THE REAR OF THE SHELL
K: WITH #4-40UNC IN THE REAR SHELL USE RIVET AS BOARDLOCK
L: WITH #4-40UNC HEX NUT IN THE FRONT OF THE SHELL
M: WITH #4-40UNC ROUND NUT IN THE FRONT OF THE SHELL

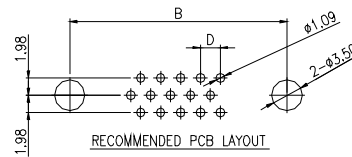
NOTE : SOME SIZES, STYLES AND OPTION ARE NON-STANDARD, NON-CANCELLABLE, NON-RETURNABLE

HDB 400 SERIES - MOUNTING TYPE H SOLDER CUP TYPE - Sc

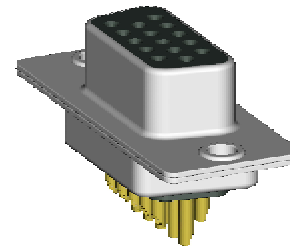
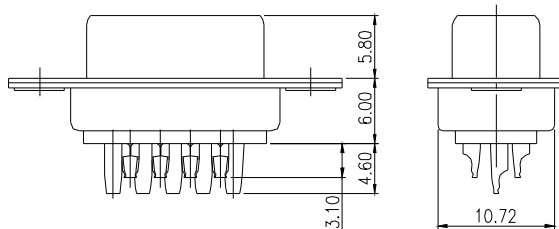
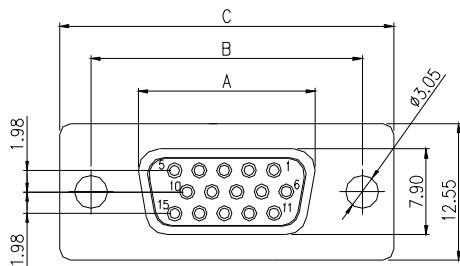
MALE



PART NO.	NO. OF CONTACT	DIMENSIONS			
		A	B	C	D
HDB400-ScM15GX-H	15	16.92	24.99	30.61	2.29
HDB400-ScM26GX-H	26	25.25	33.32	39.14	2.29
HDB400-ScM44GX-H	44	36.96	47.04	53.04	2.29
HDB400-ScM62GX-H	62	55.42	63.50	69.32	2.41



FEMALE



PART NO.	NO. OF CONTACT	DIMENSIONS			
		A	B	C	D
HDB400-ScF15GX-H	15	16.33	24.99	30.61	2.29
HDB400-ScF26GX-H	26	24.66	33.32	39.14	2.29
HDB400-ScF44GX-H	44	38.38	47.04	53.04	2.29
HDB400-ScF62GX-H	62	54.84	63.50	69.32	2.41

HDB	400	Sc	X	XX	GX	H
HIGH DENSITY D- SUB	SERIES NO. 400	TERMINAL TYPE. Sc: SOLDER CUP TYPE	GENDER M: MALE F: FEMALE	NO. OF CONTACT 15,26,44,62	CONTACT PLATING OPTION Gf: GOLD FLASH Gf1: GOLD FLASH ON CONTACT, TIN PLATED ON SOLDER TAIL G151: 15u" GOLD ON CONTACT, TIN PLATED ON SOLDER TAIL G301: 30u" GOLD ON CONTACT, TIN PLATED ON SOLDER TAIL	MOUNTING TYPE H: WITH MOUNTING HOLE ONLY

ELECTRICAL CHARACTERISTIC

CONTACT CURRENT RATING: 1 AMP
 CONTACT RESISTANCE: 25 M OHM MAX.
 INSULATION RESISTANCE: 5000 OHM MIN. AT 500V DC
 DIELECTRIC WITHSTANDING VOLTAGE: AC 1000V / MIN. R.M.S
 OPERATING TEMPERATURE:-55°C~ +105°C

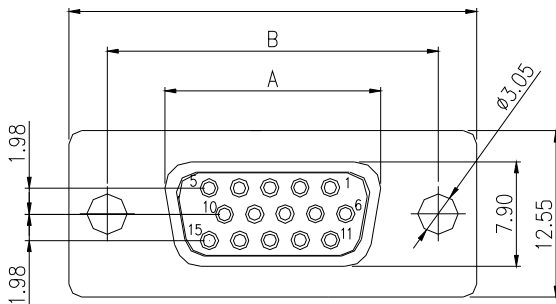
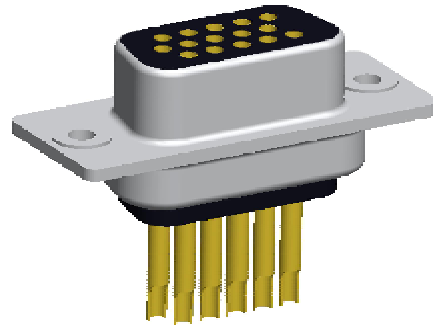
MATERIALS

INSULATOR: P.B.T. UL 94V-0 RATED
 SHELL: COLD ROLLER STEEL
 CONTACTS: BRASS

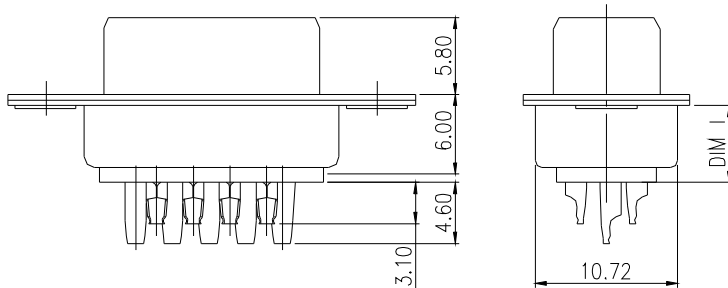
NOTE : SOME SIZES, STYLES AND OPTION ARE NON-STANDARD, NON-CANCELLABLE, NON-RETURNABLE

HDB 400 SERIES - MOUNTING TYPE I SOLDER CUP TYPE - Sc

FEMALE



PART NO.	NO. OF CONTACT	DIMENSIONS			
		A	B	C	D
HDB400-ScF15GX-I	15	16.33	24.99	30.61	2.29
HDB400-ScF26GX-I	26	24.66	33.32	39.14	2.29
HDB400-ScF44GX-I	44	38.38	47.04	53.04	2.29
HDB400-ScF62GX-I	62	54.84	63.50	69.32	2.41



HDB	400	Sc	X	XX	GX	I
HIGH DENSITY D- SUB	SERIES NO. 400	TERMINAL TYPE. Sc: SOLDER CUP TYPE	GENDER M: MALE F: FEMALE	NO. OF CONTACT 15, 26, 44, 62	CONTACT PLATING OPTION Gf: GOLD FLASH Gf1: GOLD FLASH ON CONTACT, TIN PLATED ON SOLDER TAIL G15t: 15u" GOLD ON CONTACT, TIN PLATED ON SOLDER TAIL G30t: 30u" GOLD ON CONTACT, TIN PLATED ON SOLDER TAIL	MOUNTING TYPE I: WITH #4-40UNO HEX NUT IN THE REAR OF THE SHELL

ELECTRICAL CHARACTERISTIC

CONTACT CURRENT RATING: 1 AMP
 CONTACT RESISTANCE: 25 M OHM MAX.
 INSULATION RESISTANCE: 5000 OHM MIN. AT 500V DC
 DIELECTRIC WITHSTANDING VOLTAGE: AC 1000V / MIN. R.M.S
 OPERATING TEMPERATURE: -55°C ~ +105°C

MATERIALS

INSULATOR: P.B.T. UL 94V-0 RATED
 SHELL: COLD ROLLER STEEL
 CONTACTS: BRASS

NOTE : SOME SIZES, STYLES AND OPTION ARE NON-STANDARD, NON-CANCELLABLE, NON-RETURNABLE