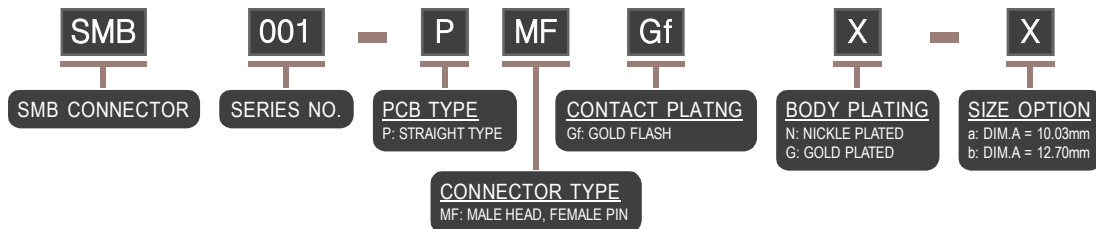
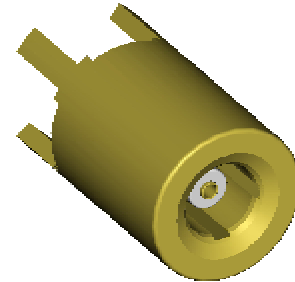
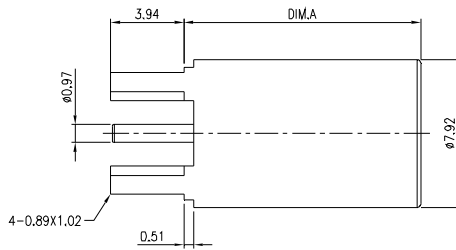
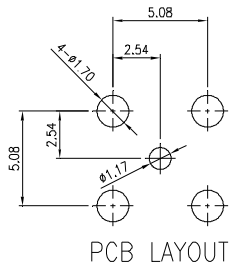


**- SMB -**  
**SUB MINIATURE B CONNECTOR**

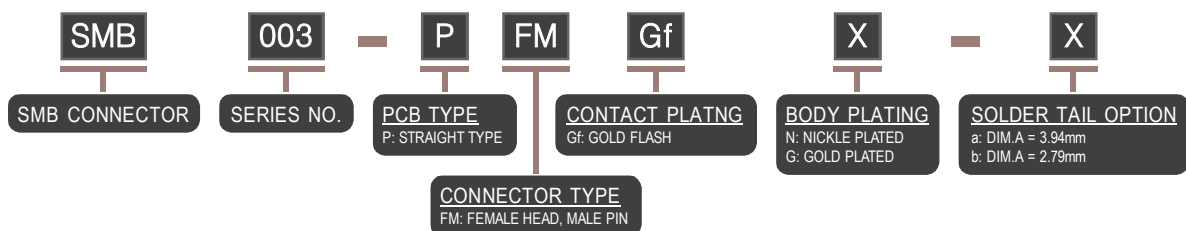
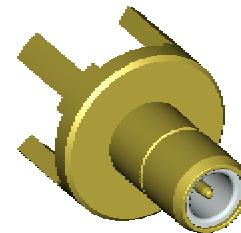
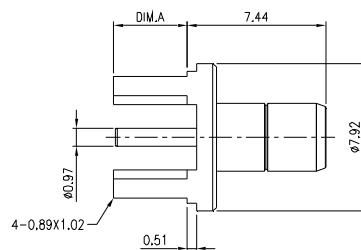
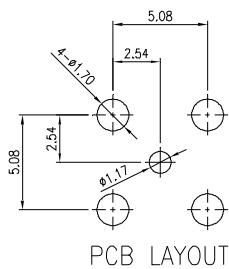
**TERMINAL TYPE**

- P : PCB TYPE, STRAIGHT TYPE
  - Pb : PCB TYPE, STRAIGHT TYPE, BULKHEAD
  - Pa : PCB TYPE, RIGHT ANGLE TYPE
  - Pab : PCB TYPE, RIGHT ANGLE TYPE, BULKHEAD
  - Pas : PCB TYPE, RIGHT ANGLE TYPE, MOISTURE SEAL
  - Pt : PCB TYPE, SURFACE MOUNT TYPE
  - EI : END LAUNCH TYPE
  - Ca : CABLE CONNECTOR, RIGHT ANGLE TYPE
-

## SMB CONNECTOR - STRAIGHT TYPE - P

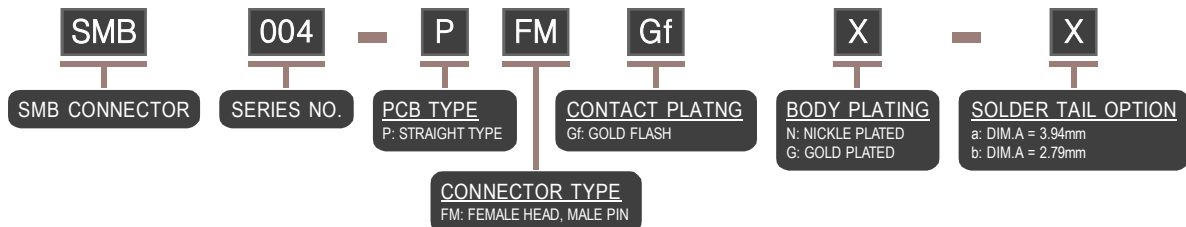
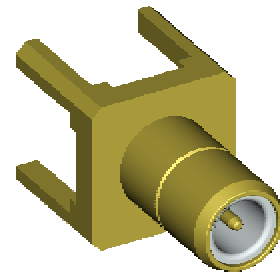
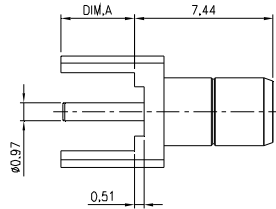
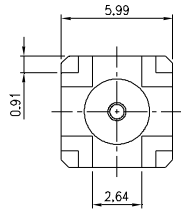
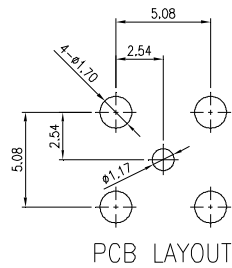


## SMB CONNECTOR - STRAIGHT TYPE - P

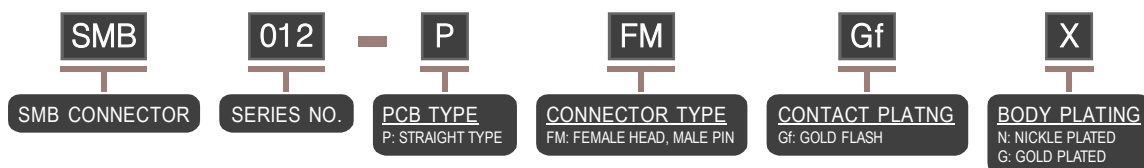
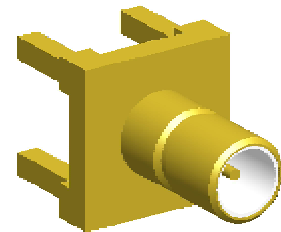
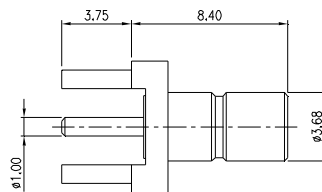
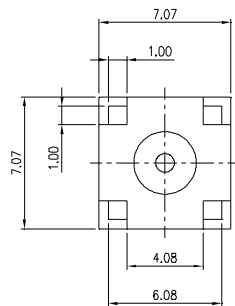
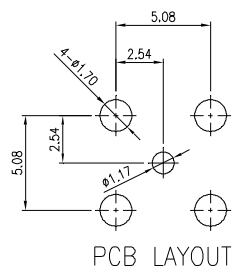


NOTE : SOME SIZES, STYLES AND OPTION ARE NON-STANDARD, NON-CANCELLABLE, NON-RETURNABLE

## SMB CONNECTOR - STRAIGHT TYPE - P

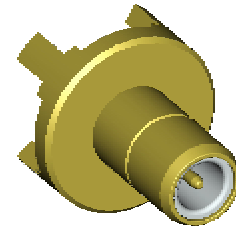
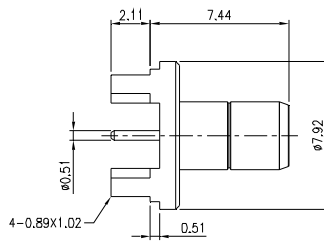
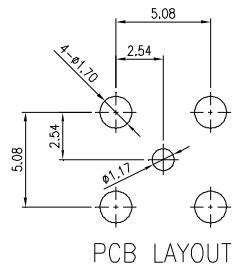


## SMB CONNECTOR - STRAIGHT TYPE - P



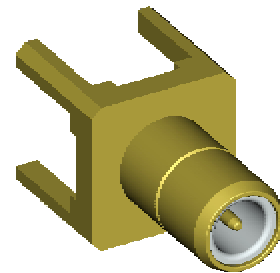
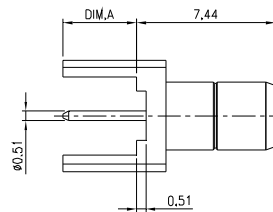
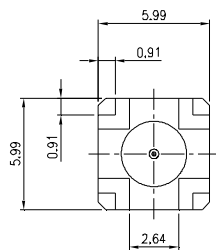
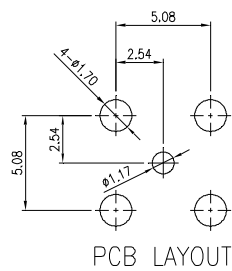
NOTE : SOME SIZES, STYLES AND OPTION ARE NON-STANDARD, NON-CANCELLABLE, NON-RETURNABLE

## SMB CONNECTOR - STRAIGHT TYPE - P



<b>SMB</b>	<b>701</b>	<b>P</b>	<b>FM</b>	<b>Gf</b>	<b>X</b>
SMB CONNECTOR	SERIES NO.	PCB TYPE P: STRAIGHT TYPE	CONNECTOR TYPE FM: FEMALE HEAD, MALE PIN	CONTACT PLATING Gf: GOLD FLASH	BODY PLATING N: NICKLE PLATED G: GOLD PLATED

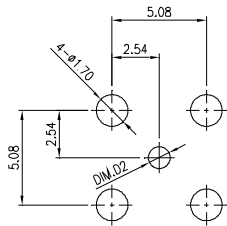
## SMB CONNECTOR - STRAIGHT TYPE - P



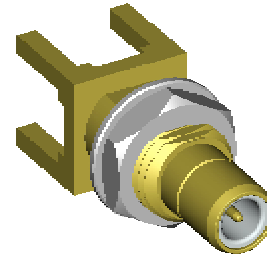
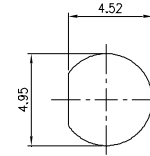
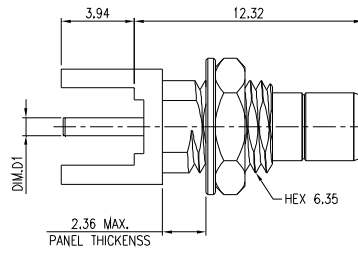
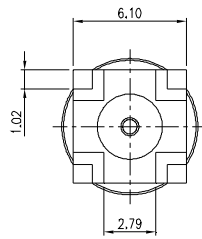
<b>SMB</b>	<b>702</b>	<b>P</b>	<b>FM</b>	<b>Gf</b>	<b>X</b>	<b>X</b>
SMB CONNECTOR	SERIES NO.	PCB TYPE P: STRAIGHT TYPE	CONNECTOR TYPE FM: FEMALE HEAD, MALE PIN	CONTACT PLATING Gf: GOLD FLASH	BODY PLATING N: NICKLE PLATED G: GOLD PLATED	SOLDER TAIL OPTION a: DIM.A = 3.94mm b: DIM.A = 2.79mm

NOTE : SOME SIZES, STYLES AND OPTION ARE NON-STANDARD, NON-CANCELLABLE, NON-RETURNABLE

## SMB CONNECTOR - STRAIGHT TYPE, BULKHEAD - Pb



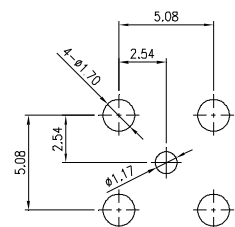
PCB LAYOUT



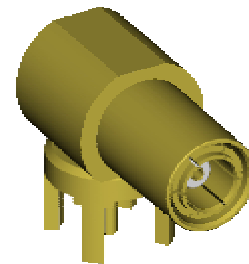
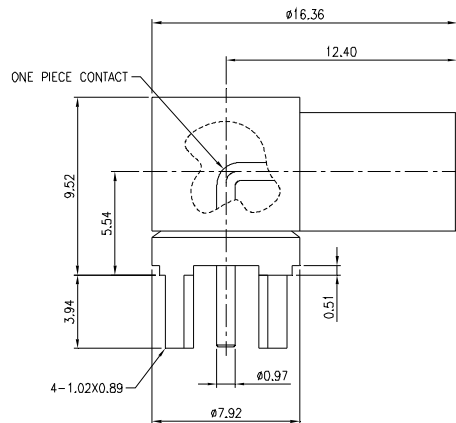
PART NO.	DIMENSIONS	
	D1	D2
SMA005-PbFMGfX	Ø0.91mm	Ø1.17mm
SMA703-PbFMGfX	Ø0.51mm	Ø0.71mm

<b>SMB</b>	<b>XXX</b>	<b>Pb</b>	<b>FM</b>	<b>Gf</b>	<b>X</b>
SMB CONNECTOR	SERIES NO. 005, 703	PCB TYPE Pb: STRAIGHT TYPE, BULKHEAD	CONNECTOR TYPE FM: FEMALE HEAD, MALE PIN	CONTACT PLATNG Gf: GOLD FLASH	BODY PLATING N: NICKLE PLATED G: GOLD PLATED

## SMB CONNECTOR - RIGHT ANGLE TYPE - Pa



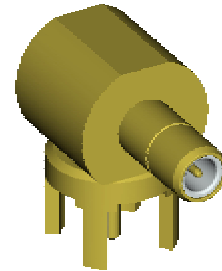
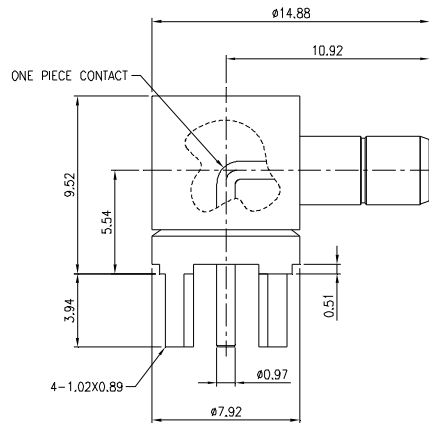
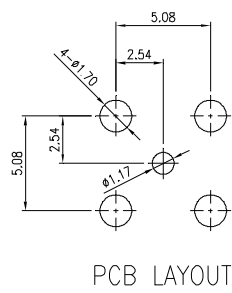
PCB LAYOUT



<b>SMB</b>	<b>002</b>	<b>Pa</b>	<b>MF</b>	<b>Gf</b>	<b>X</b>	<b>X</b>
SMB CONNECTOR	SERIES NO.	PCB TYPE Pa: RIGHT ANGLE TYPE	CONNECTOR TYPE MF: MALE HEAD, FEMALE PIN	CONTACT PLATNG Gf: GOLD FLASH	BODY PLATING N: NICKLE PLATED G: GOLD PLATED	SOLDER TAIL OPTION a: DIM.A = 3.94mm b: DIM.A = 2.79mm

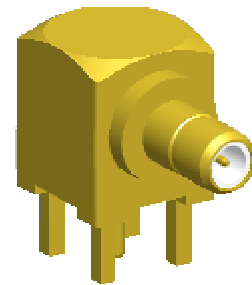
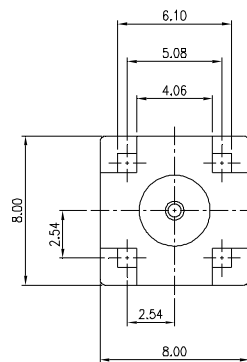
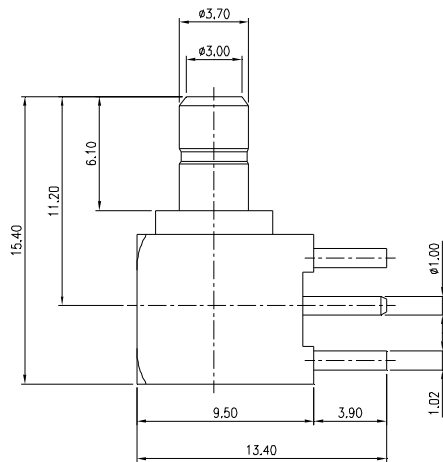
NOTE : SOME SIZES, STYLES AND OPTION ARE NON-STANDARD, NON-CANCELLABLE, NON-RETURNABLE

## SMB CONNECTOR - RIGHT ANGLE TYPE - Pa



<b>SMB</b>	<b>007</b>	<b>Pa</b>	<b>FM</b>	<b>Gf</b>	<b>X</b>
SMB CONNECTOR	SERIES NO.	PCB TYPE Pa: RIGHT ANGLE TYPE	CONNECTOR TYPE FM: FEMALE HEAD, MALE PIN	CONTACT PLATNG Gf: GOLD FLASH	BODY PLATING N: NICKLE PLATED G: GOLD PLATED

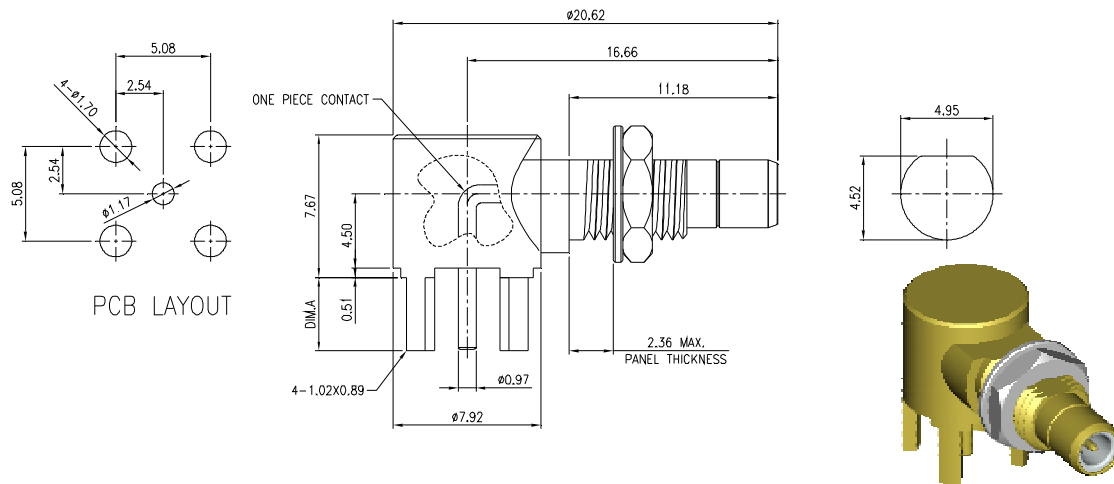
## SMB CONNECTOR - RIGHT ANGLE TYPE - Pa



<b>SMB</b>	<b>203</b>	<b>Pa</b>	<b>FM</b>	<b>Gf</b>	<b>X</b>
SMB CONNECTOR	SERIES NO.	PCB TYPE Pa: RIGHT ANGLE TYPE	CONNECTOR TYPE FM: FEMALE HEAD, MALE PIN	CONTACT PLATNG Gf: GOLD FLASH	BODY PLATING N: NICKLE PLATED G: GOLD PLATED

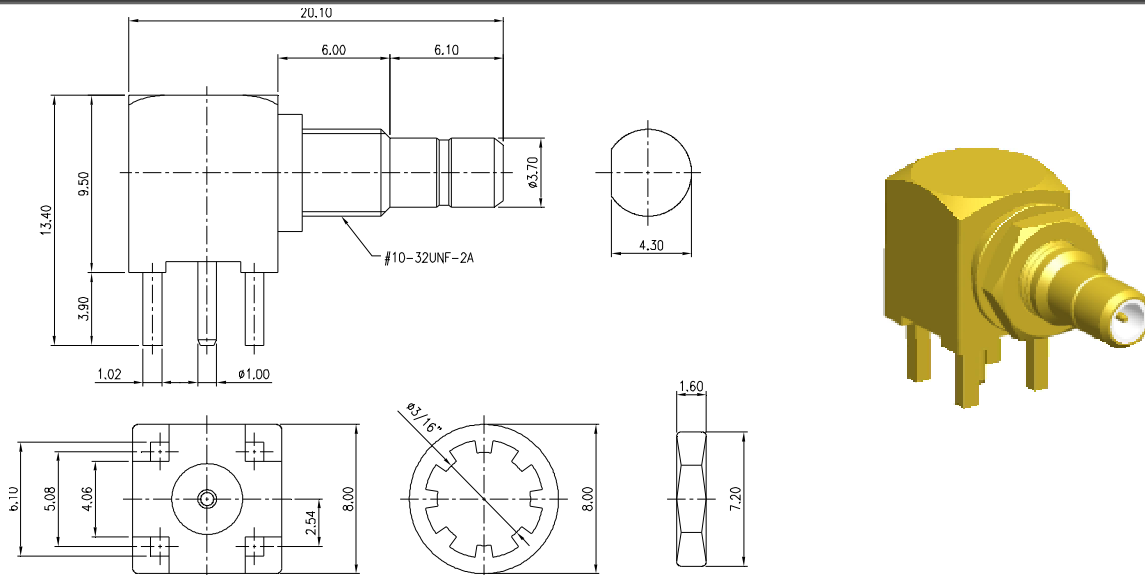
NOTE : SOME SIZES, STYLES AND OPTION ARE NON-STANDARD, NON-CANCELLABLE, NON-RETURNABLE

## SMB CONNECTOR - RIGHT ANGLE TYPE, BULKHEAD - Pab



<b>SMB</b>	<b>009</b>	<b>Pab</b>	<b>FM</b>	<b>Gf</b>	<b>X</b>	<b>X</b>
SMB CONNECTOR	SERIES NO.	PCB TYPE Pab: RIGHT ANGLE TYPE, BULKHEAD	CONNECTOR TYPE FM: FEMALE HEAD, MALE PIN	CONTACT PLATNG Gf: GOLD FLASH	BODY PLATING N: NICKLE PLATED G: GOLD PLATED	SOLDER TAIL LENGTH a: DIM.A = 3.94mm b: DIM.A = 2.11mm

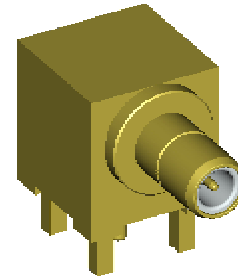
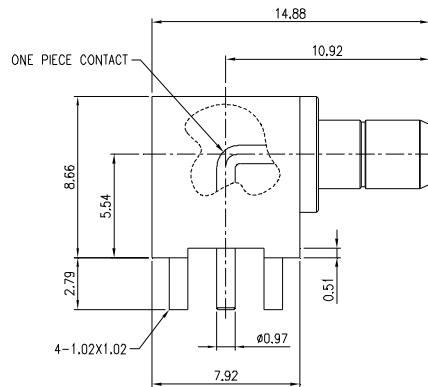
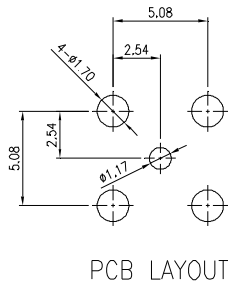
## SMB CONNECTOR - RIGHT ANGLE TYPE, BULKHEAD - Pab



<b>SMB</b>	<b>208</b>	<b>Pab</b>	<b>FM</b>	<b>Gf</b>	<b>X</b>
SMB CONNECTOR	SERIES NO.	PCB TYPE Pab: RIGHT ANGLE TYPE, BULKHEAD	CONNECTOR TYPE FM: FEMALE HEAD, MALE PIN	CONTACT PLATNG Gf: GOLD FLASH	BODY PLATING N: NICKLE PLATED G: GOLD PLATED

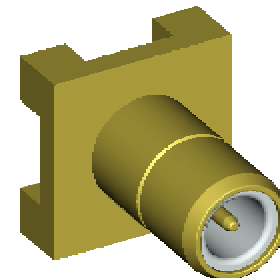
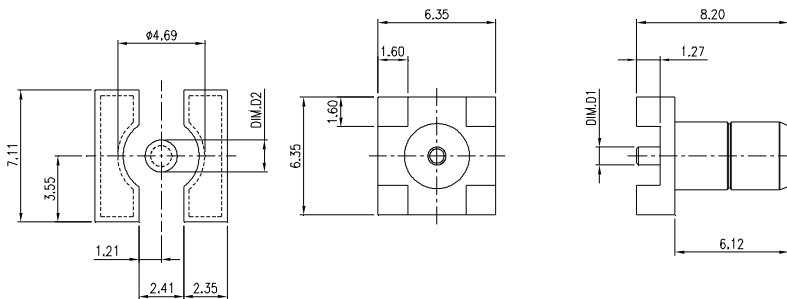
NOTE : SOME SIZES, STYLES AND OPTION ARE NON-STANDARD, NON-CANCELLABLE, NON-RETURNABLE

## SMB CONNECTOR - RIGHT ANGLE TYPE, MOISTURE SEAL - Pas



<b>SMB</b>	<b>008</b>	<b>-</b>	<b>Pas</b>	<b>FM</b>	<b>Gf</b>	<b>X</b>
<b>SMB CONNECTOR</b>	<b>SERIES NO.</b>		<b>PCB TYPE</b> Pas: RIGHT ANGLE TYPE, MOISTURE SEAL	<b>CONNECTOR TYPE</b> FM: FEMALE HEAD, MALE PIN	<b>CONTACT PLATNG</b> Gf: GOLD FLASH	<b>BODY PLATING</b> N: NICKLE PLATED G: GOLD PLATED

## SMB CONNECTOR - SURFACE MOUNT TYPE - Pt



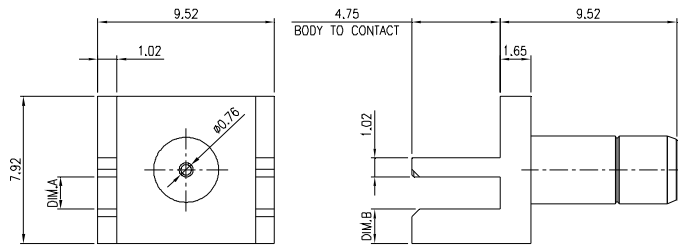
PART NO.	DIMENSIONS	
	D1	D2
SMA006-PtFMGfX	Ø0.97mm	Ø1.73mm
SMA704-PtFMGfX	Ø0.51mm	Ø0.71mm

<b>SMB</b>	<b>XXX</b>	<b>-</b>	<b>Pt</b>	<b>FM</b>	<b>Gf</b>	<b>X</b>
<b>SMB CONNECTOR</b>	<b>SERIES NO.</b> 006, 704		<b>PCB TYPE</b> Pt: SURFACE MOUNT TYPE	<b>CONNECTOR TYPE</b> FM: FEMALE HEAD, MALE PIN	<b>CONTACT PLATNG</b> Gf: GOLD FLASH	<b>BODY PLATING</b> N: NICKLE PLATED G: GOLD PLATED

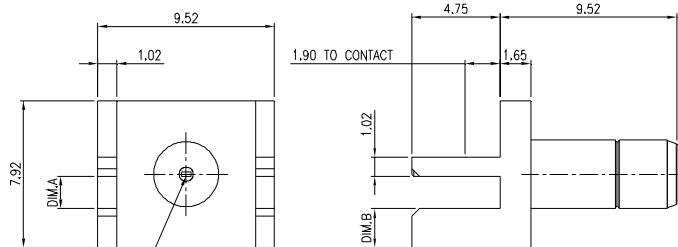
NOTE : SOME SIZES, STYLES AND OPTION ARE NON-STANDARD, NON-CANCELLABLE, NON-RETURNABLE



## SMB CONNECTOR - END LAUNCH TYPE - EI



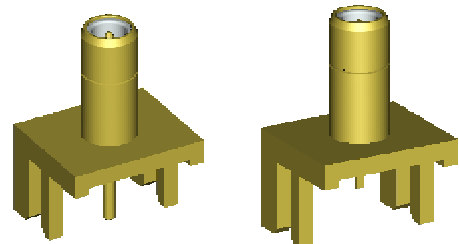
SMB010-EIFMGfX-X



SMB011-EIFMGfX-X

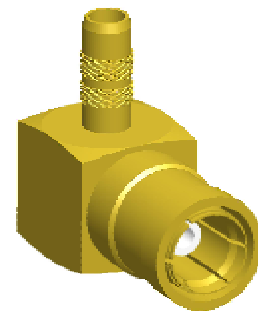
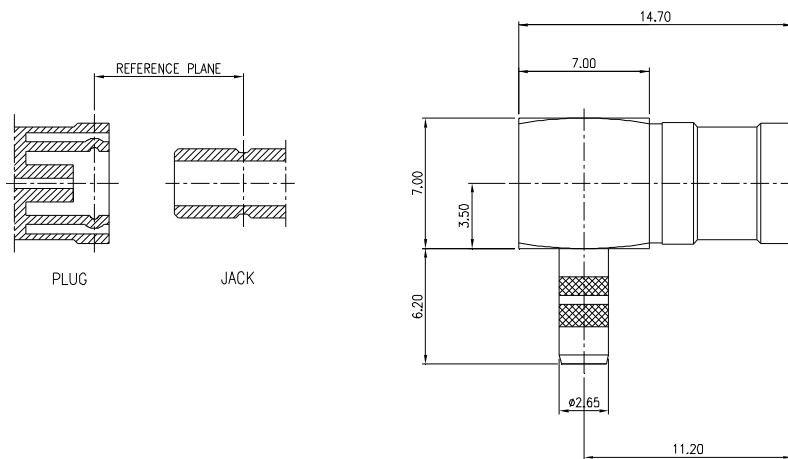
TABLE 1:

PART NO.	DIMENSIONS	
	A	B
SMB010-EIFMGfX-a	1.73mm	1.85mm
SMB010-EIFMGfX-b	1.22mm	2.36mm
SMB011-EIFMGfX-a	1.73mm	2.11mm
SMB011-EIFMGfX-b	1.22mm	2.62mm



<b>SMB</b>	<b>XXX</b>	<b>EI</b>	<b>FM</b>	<b>Gf</b>	<b>X</b>	<b>X</b>
SMB CONNECTOR	SERIES NO. 010, 011	TERMINAL TYPE EI: END LAUNCH TYPE	CONNECTOR TYPE FM: FEMALE HEAD, MALE PIN	CONTACT PLATNG Gf: GOLD FLASH	BODY PLATING N: NICKLE PLATED G: GOLD PLATED	SIZE OPTION SEE TABLE 1

## SMB CONNECTOR - CABLE CONNECTOR, RIGHT ANGLE TYPE - Ca



<b>SMB</b>	<b>012</b>	<b>Ca</b>	<b>MF</b>	<b>Gf</b>	<b>X</b>
SMB CONNECTOR	SERIES NO.	CABLE CONNECTOR Ca: RIGHT ANGLE TYPE	CONNECTOR TYPE MF: MALE HEAD, FEMALE PIN	CONTACT PLATNG Gf: GOLD FLASH	BODY PLATING N: NICKLE PLATED G: GOLD PLATED

NOTE : SOME SIZES, STYLES AND OPTION ARE NON-STANDARD, NON-CANCELLABLE, NON-RETURNABLE