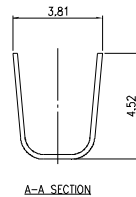
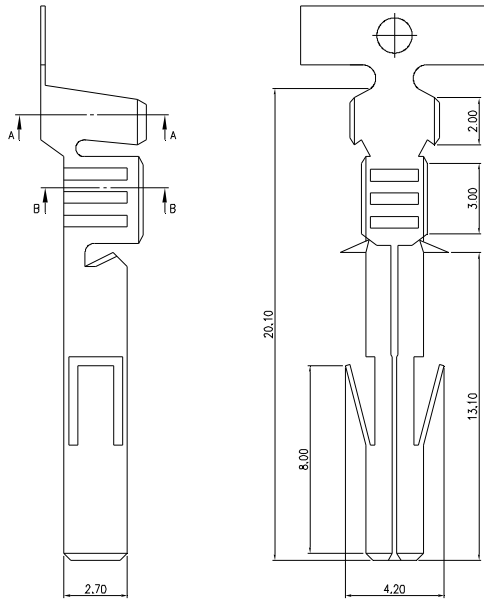


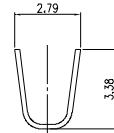
MMI

**WAFER, HOUSING & TERMINAL
PITCH: 6.35x6.35mm**

TERMINAL- MCo 001 (FEMALE)



A-A SECTION



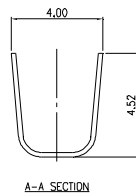
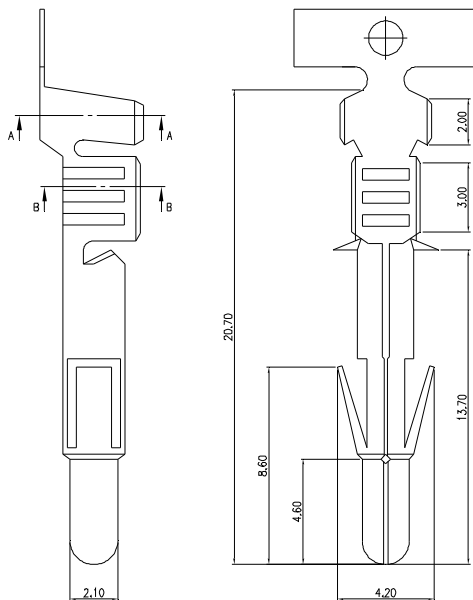
B-B SECTION



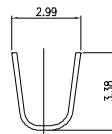
MC	o	001	-	T	F
WAFER SERIES		SERIES NO.		TERMINAL	GENDER F: FEMALE
MATING HOUSING PITCH o: 6.35mm					

WIRE RANGE: AWG #24 - #28
MATERIAL: BRASS
FINISH: TIN PLATED

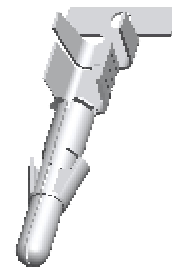
TERMINAL- MCo 001 (MALE)



A-A SECTION



B-B SECTION

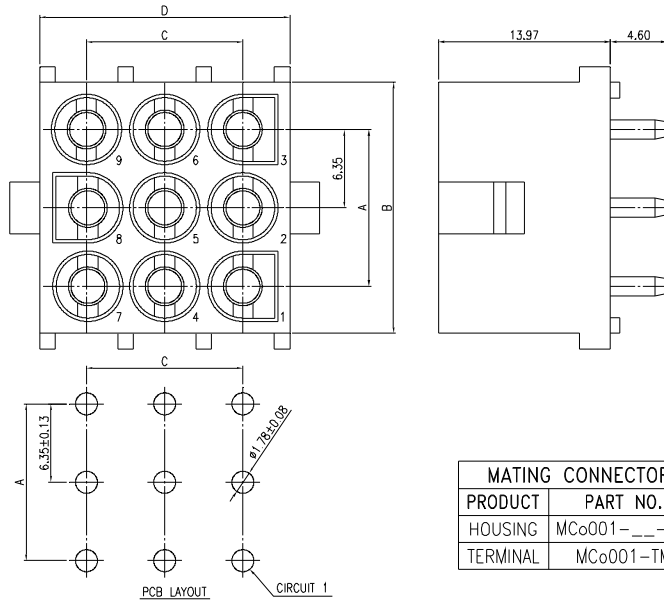


MC	o	001	-	T	M
WAFER SERIES		SERIES NO.		TERMINAL	GENDER M: MALE
MATING HOUSING PITCH o: 6.35mm					

WIRE RANGE: AWG #24 - #28
MATERIAL: BRASS
FINISH: TIN PLATED

NOTE : SOME SIZES, STYLES AND OPTION ARE NON-STANDARD, NON-CANCELLABLE, NON-RETURNABLE

6.35 X 6.35mm WAFER - MCo 001 STRAIGHT TYPE - P



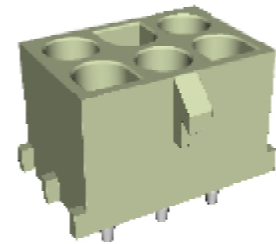
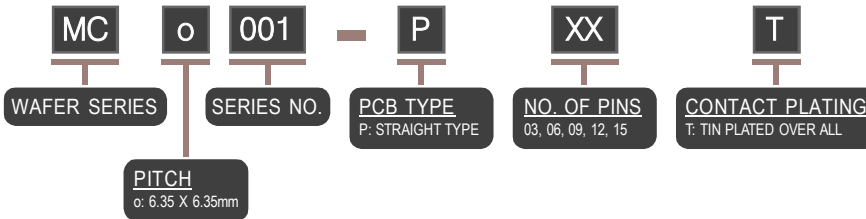
SPECIFICATIONS

VOLTAGE RATING: 600V AC/DC
 CURRENT RATING: 13.5A AC/DC
 INSULATOR RESISTANCE: 2900M OHM MIN.
 WITHSTAND VOLTAGE: 1000V AC/MINUTE
 CONTACT RESISTANCE: 3.5m OHM MAX.
 TEMPERATURE RANGE: -55°C ~ +105°C

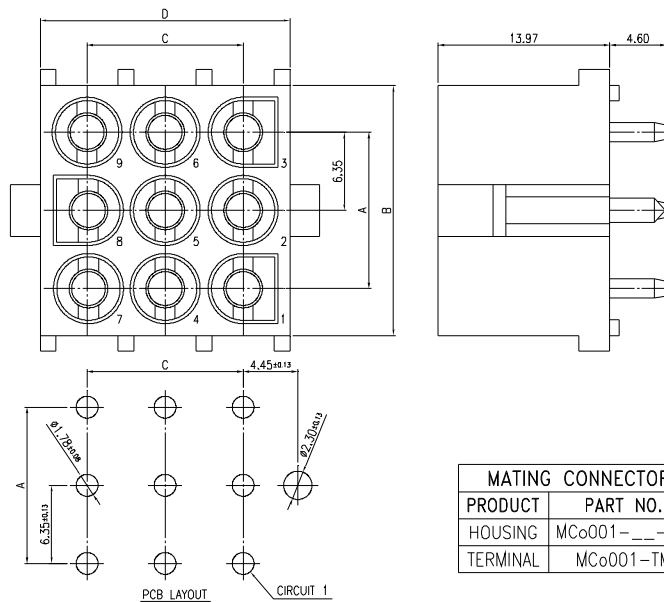
MATERIALS

CONTACT: PHOSPHOR BRONZE
 BASE: NYLON, UL 94V-0

PART NO.	CIRCUITS	DIMENSION			
		A	B	C	D
MCo001-P03T	3X1	--	7.62	12.70	20.32
MCo001-P06T	3X2	12.70	20.32	6.35	13.97
MCo001-P09T	3X3	12.70	20.32	12.70	20.30
MCo001-P12T	3X4	12.70	20.32	19.05	26.67
MCo001-P15T	3X5	12.70	20.32	25.40	33.02



6.35 X 6.35mm WAFER - MCo 001 STRAIGHT TYPE - P (WITH PLASTIC)



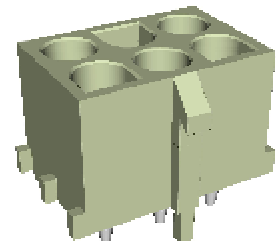
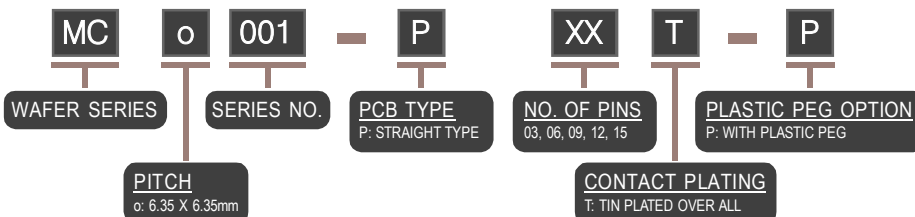
SPECIFICATIONS

VOLTAGE RATING: 600V AC/DC
 CURRENT RATING: 13.5A AC/DC
 INSULATOR RESISTANCE: 2900M OHM MIN.
 WITHSTAND VOLTAGE: 1000V AC/MINUTE
 CONTACT RESISTANCE: 3.5m OHM MAX.
 TEMPERATURE RANGE: -55°C ~ +105°C

MATERIALS

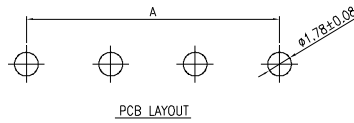
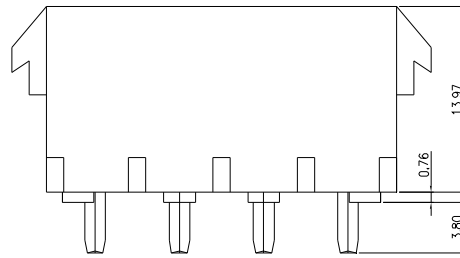
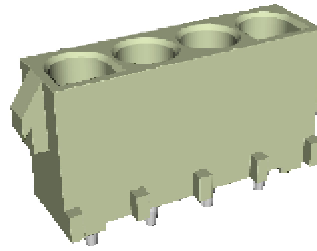
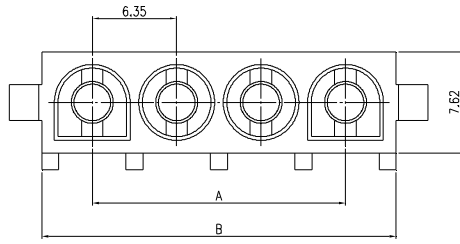
CONTACT: PHOSPHOR BRONZE
 BASE: NYLON, UL 94V-0

PART NO.	CIRCUITS	DIMENSION			
		A	B	C	D
MCo001-P03T-P	3X1	--	7.62	12.70	20.32
MCo001-P06T-P	3X2	12.70	20.32	6.35	13.97
MCo001-P09T-P	3X3	12.70	20.32	12.70	20.30
MCo001-P12T-P	3X4	12.70	20.32	19.05	26.67
MCo001-P15T-P	3X5	12.70	20.32	25.40	33.02



NOTE : SOME SIZES, STYLES AND OPTION ARE NON-STANDARD, NON-CANCELLABLE, NON-RETURNABLE

6.35 mm WAFER - MCo 002 STRAIGHT TYPE - P



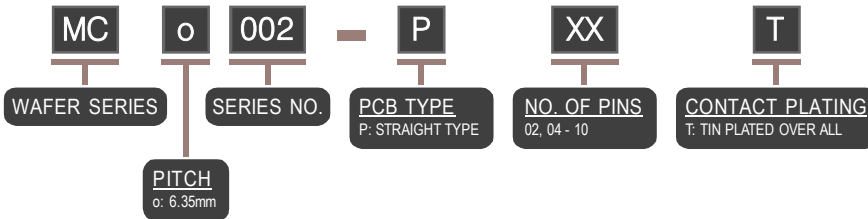
SPECIFICATIONS

VOLTAGE RATING: 600V AC/DC
CURRENT RATING: 6A AC/DC

MATERIALS

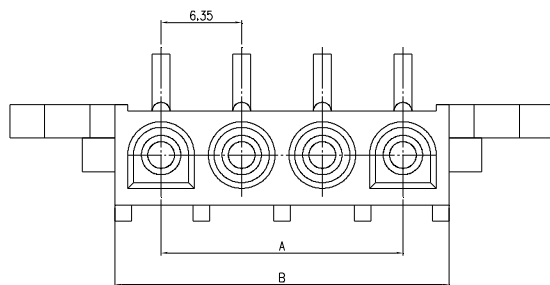
BASE: NYLON, UL 94V-0

MATING CONNECTOR	
PRODUCT	PART NO.
HOUSING	MCo002-___-HM
TERMINAL	MCo001-TM

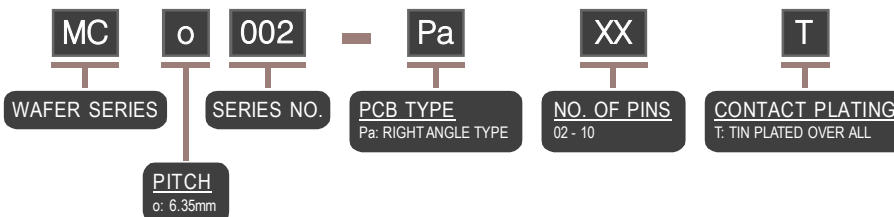
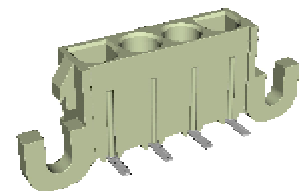
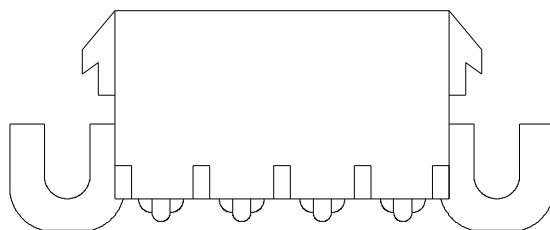
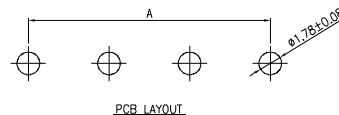


PART NO.	CIRCUITS	DIMENSION	
		A	B
MCo002-P02T	2	6.35	13.97
MCo002-P04T	4	19.05	26.67
MCo002-P05T	5	25.40	33.02
MCo002-P06T	6	31.75	39.37
MCo002-P07T	7	38.10	45.72
MCo002-P08T	8	44.45	52.07
MCo002-P09T	9	50.80	58.42
MCo002-P10T	10	57.15	64.77

6.35 mm WAFER - MCo 002 RIGHT ANGLE TYPE - Pa



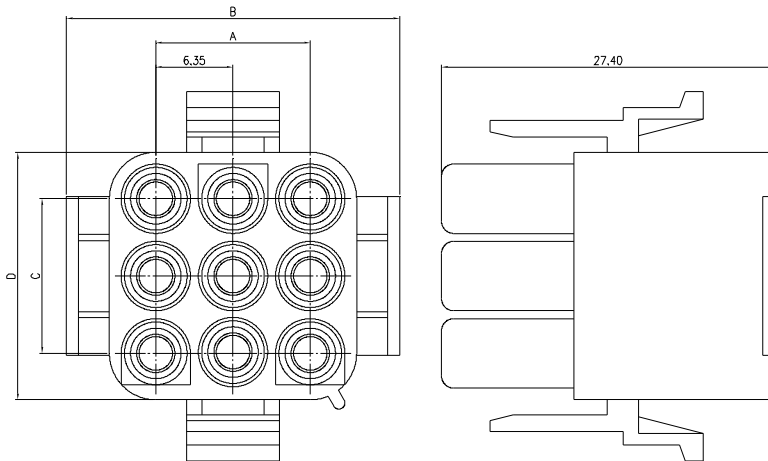
MATING CONNECTOR	
PRODUCT	PART NO.
HOUSING	MCo002-___-HM
TERMINAL	MCo001-TM



PART NO.	CIRCUITS	DIMENSION	
		A	B
MCo002-Pa02T	2	6.35	13.97
MCo002-Pa03T	3	12.70	20.32
MCo002-Pa04T	4	19.05	26.67
MCo002-Pa05T	5	25.40	33.02
MCo002-Pa06T	6	31.75	39.37
MCo002-Pa07T	7	38.10	45.72
MCo002-Pa08T	8	44.45	52.07
MCo002-Pa09T	9	50.80	58.42
MCo002-Pa10T	10	57.15	64.77

NOTE : SOME SIZES, STYLES AND OPTION ARE NON-STANDARD, NON-CANCELLABLE, NON-RETURNABLE

6.35 X 6.35mm HOUSING - MCo 001 (MALE)



SPECIFICATIONS

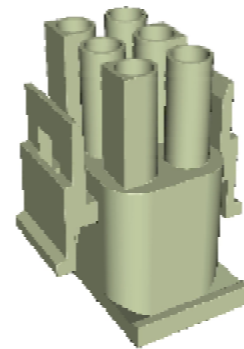
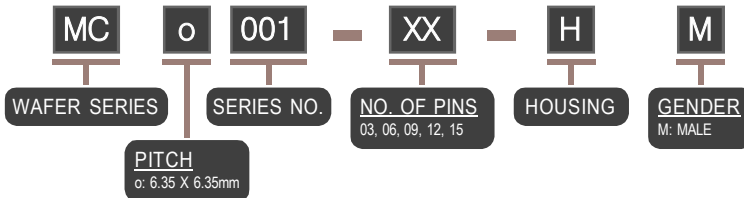
VOLTAGE RATING: 600V AC/DC
 CURRENT RATING: 13.5A AC/DC
 WITHSTAND VOLTAGE: 2900V AC/MINUTE
 INSULATOR RESISTANCE: 1000M OHM MIN.
 TEMPERATURE RANGE: -55°C ~ +105°C
 CONTACT RESISTANCE: 3.5m OHM MAX.

MATERIALS

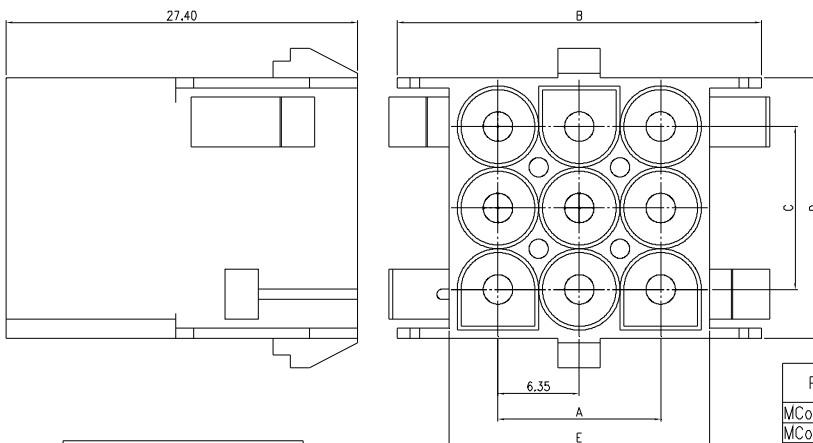
CONTACTS: PHOSPHOR BRONZE
 BASE: NYLON, UL 94V-0

PART NO.	CIRCUITS	DIMENSION			
		A	B	C	D
MCo001-03-HM	3X1	--	14.70	12.70	20.32
MCo001-06-HM	3X2	12.70	27.40	6.35	13.97
MCo001-09-HM	3X3	12.70	27.40	12.70	20.32
MCo001-12-HM	3X4	12.70	27.40	19.05	26.67
MCo001-15-HM	3X5	12.70	27.40	25.40	33.02

MATING CONNECTOR	
PRODUCT	PART NO.
WAFER	MCo001 SERIES
HOUSING	MCo001-__-HF
TERMINAL	MCo001-TM



6.35 X 6.35mm HOUSING - MCo 001 (FEMALE)



SPECIFICATIONS

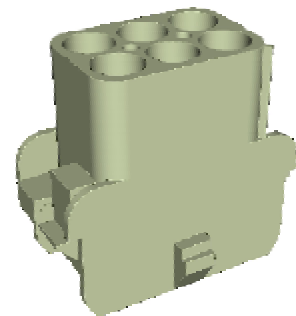
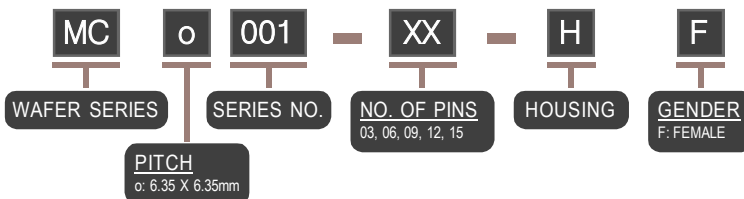
VOLTAGE RATING: 600V AC/DC
 CURRENT RATING: 13.5A AC/DC
 WITHSTAND VOLTAGE: 2900V AC/MINUTE
 INSULATOR RESISTANCE: 1000M OHM MIN.
 TEMPERATURE RANGE: -55°C ~ +105°C
 CONTACT RESISTANCE: 3.5m OHM MAX.

MATERIALS

CONTACTS: PHOSPHOR BRONZE
 BASE: NYLON, UL 94V-0

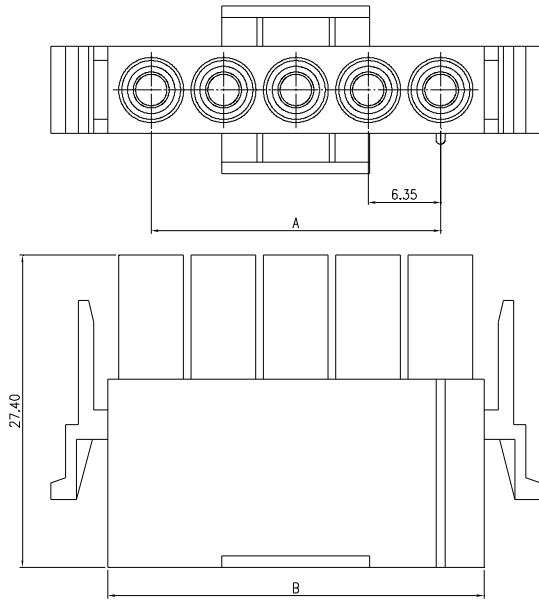
PART NO.	CIRCUITS	DIMENSION				
		A	B	C	D	E
MCo001-03-HF	3X1	--	15.70	12.70	20.32	7.60
MCo001-06-HF	3X2	12.70	28.45	6.35	13.97	20.32
MCo001-09-HF	3X3	12.70	28.45	12.70	20.32	20.32
MCo001-12-HF	3X4	12.70	28.45	19.05	26.67	20.32
MCo001-15-HF	3X5	12.70	28.45	25.40	33.02	20.32

MATING CONNECTOR	
PRODUCT	PART NO.
WAFER	MCo001 SERIES
HOUSING	MCo001-__-HM
TERMINAL	MCo001-TF



NOTE : SOME SIZES, STYLES AND OPTION ARE NON-STANDARD, NON-CANCELLABLE, NON-RETURNABLE

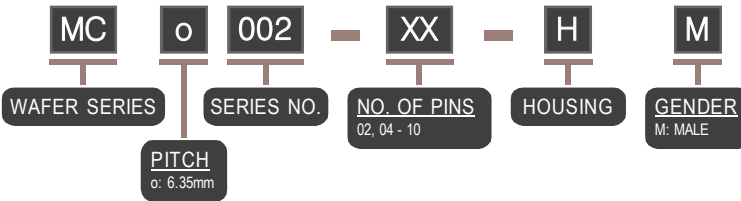
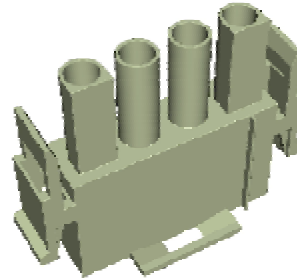
6.35 mm HOUSING - MCo 002 (MALE)



MATING CONNECTOR	
PRODUCT	PART NO.
WAFER	MCo002 SERIES
HOUSING	MCo001-__-HF
TERMINAL	MCo001-TM

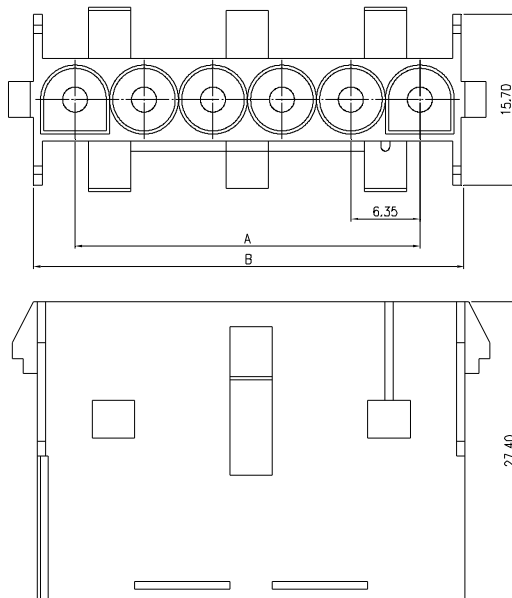
MATERIALS

BASE: NYLON, UL 94V-0



PART NO.	CIRCUITS	DIMENSION	
		A	B
MCo002-02-HM	2	6.35	13.97
MCo002-04-HM	4	19.05	26.67
MCo002-05-HM	5	25.40	33.02
MCo002-06-HM	6	31.75	39.37
MCo002-07-HM	7	38.10	45.72
MCo002-08-HM	8	44.45	52.07
MCo002-09-HM	9	50.80	58.42
MCo002-10-HM	10	57.15	64.77

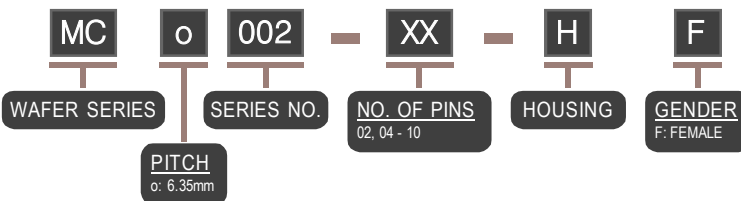
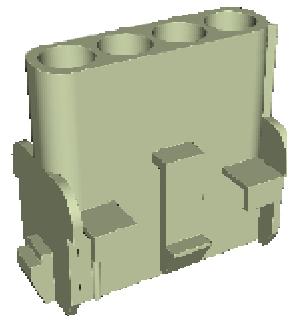
6.35 mm HOUSING - MCo 002 (FEMALE)



MATING CONNECTOR	
PRODUCT	PART NO.
WAFER	MCo002 SERIES
HOUSING	MCo001-__-HM
TERMINAL	MCo001-TF

MATERIALS

BASE: NYLON, UL 94V-0



PART NO.	CIRCUITS	DIMENSION	
		A	B
MCo002-02-HF	2	6.35	13.97
MCo002-04-HF	4	19.05	26.67
MCo002-05-HF	5	25.40	33.02
MCo002-06-HF	6	31.75	39.37
MCo002-07-HF	7	38.10	45.72
MCo002-08-HF	8	44.45	52.07
MCo002-09-HF	9	50.80	58.42
MCo002-10-HF	10	57.15	64.77

NOTE : SOME SIZES, STYLES AND OPTION ARE NON-STANDARD, NON-CANCELLABLE, NON-RETURNABLE